

SUBMITTAL SHEET

STRETCH METAL

HOOK-ON

Project Name _____

Specification Section _____

Ceiling Type _____

SUBSTRATE

- Steel (all mesh types available in steel)
 Aluminum (upon request)
 (Material gauge to be determined by pattern type)

SIZES

LS6, LS8, LS10, LS12, LS16
 LD10, LD16

- 30.48 cm (12") x _____
 45.72 cm (18") x _____
 60.96 cm (24") x _____

(Panel lengths available 60.96 cm (24") -
 182.88 cm (72") max length)

LD20 Rotterdam, LD28 Moscow
 LD43 Paris, LD62 Dubai, LD85 New York

- 30.48 cm (12") x _____
 45.72 cm (18") x _____
 60.96 cm (24") x _____
 76.2 cm (30") x _____

(Panel lengths available 60.96 cm (24") -
 243.84 cm (96") max length)

MESH TYPES

Micro Mesh Square
 (Folded & Flat) (Folded & Flat)

- LS6 LS12
 LS8 LS16
 LS10

Micro Mesh Diamond
 (Flat only)

- LD10
 LD16
 LD20 Rotterdam
 LD28 Moscow

Macro Mesh Diamond

- LD43 Paris
 LD62 Dubai
 LD85 New York

PANEL OPTIONS*

- Folded Flat

(*LD43 Paris, LD62 Dubai, LD85 New York available in Flat only, all others available in Flat & Folded)

PANEL TYPES

- Single Continuous

COLOUR/FINISH

- Cotton White 0280 / RAL 9010 Pure White, Matte/Eggshell Gloss 5-15%
 Signal White 7003P / RAL 9003 Signal White, Matte/Eggshell Gloss 5-15%
 Traffic White 5016P / RAL 9016 Traffic White, Matte/Eggshell Gloss 5-15%
 Natural 7163P / RAL 9006 White Aluminum, Matte/Eggshell Gloss 5-15%
 Atlantic Grey 1117 / RAL 9007 Grey Aluminum, Matte/Eggshell Gloss 5-15%
 Starless Black 5000P / RAL 9005 Jet Black, Matte/Eggshell Gloss 5-15%
 Raven Black 5030P / RAL 9005 Jet Black, Satin-Gloss 25-40%
 Sable Black 5060P / RAL 9005 Jet Black, Semi-Gloss 40-70%
 Wet Glass Black 5095P / RAL 9005 Jet Black, Full Gloss 70-90%
 Other RAL # _____

Reference of Gloss Types:	Matte/Eggshell Gloss (5-15%) Semi-Gloss (40-70%)	Satin-Gloss (25-40%) Full-Gloss (70-90%)
----------------------------------	---	---

EXPOSURE

- Interior Only

Shop Drawings required on all Stretch Metal projects.

To Contact Us:

5015 Oakbrook Parkway, Suite 100
 Norcross, GA 30093
 phone: 800.233.8990
 www.certainteed.ca/architectural



Certainteed Architectural Products, a division of Certainteed Canada, Inc.

SUBMITTAL SHEET **STRETCH METAL HOOK-ON**

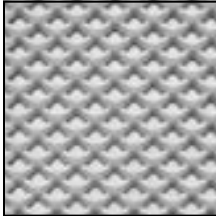
MESH TYPES

All types available in steel. Aluminum on request. All meshes shown 1:3 scale.

Note: Mesh shapes: S = Square and D = Diamond

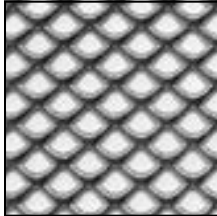
Micro Mesh Square (Folded & Flat)

LS6



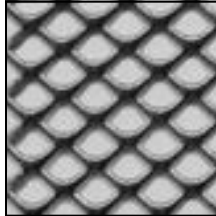
Open area: 36%

LS8



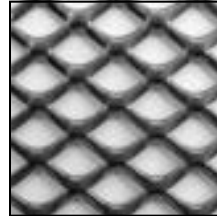
Open area: 54%

LS10



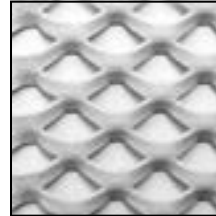
Open area: 57%

LS12



Open area: 70%

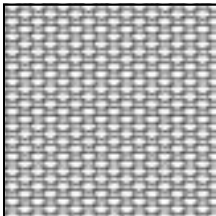
LS16



Open area: 46%

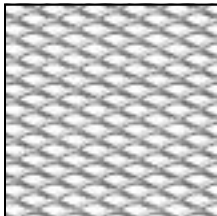
Micro Mesh Diamond (Folded & Flat)

LD10



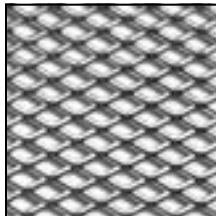
Open area: 45%

LD16



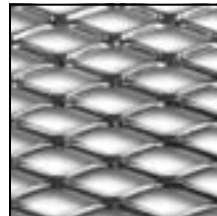
Open area: 47%

LD20 Rotterdam



Open area: 55%

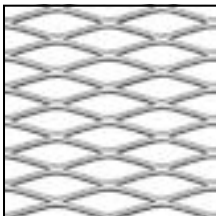
LD28 Moscow



Open area: 55%

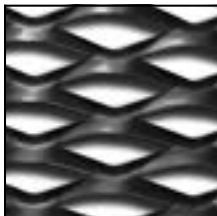
Macro Mesh Diamond (Flat only)

LD43 Paris



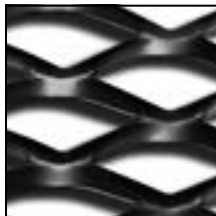
Open area: 60%

LD62 Dubai



Open area: 36%

LD85 New York



Open area: 48%

PHYSICAL DATA

Substrate: Aluminum and Steel

Warranty: 1 year Limited Warranty

Seismic rating: Classes A,B,C,D,E,F

Fire rating: Rated per CAN/ULC-S102

- Painted or anodized metal: Flame spread: ≤ 25 , Smoke ≤ 50

Weight: Varies

Wind load: N/A

Recycled content: Up to 92% (Aluminum); 25% (Steel)

Light reflectance (LR) Coefficient per ASTM E1264 & ASTM E1477:

- Varies with finish