



Designed to enhance thermal and acoustical performance for use in exposed wood framing, below panel deck roof systems and other special constructions where a 25 Flame Spread rating (Class A, Class 1) for exposed applications is required. The extended flange permits use in applications where a wider flange is required.

FEATURES & BENEFITS

CertaPro Extended Flange Batts deliver thermal performance that saves energy and helps control building operating costs. The excellent acoustical properties improve sound control performance in commercial panel decks. The product resists mold and mildew and will not rot or deteriorate. CertaPro Extended Flange Batts are lightweight and will not settle or sag.

The FSK and white PSK faced products reduce lighting requirements when exposed, due to their light-reflective surfaces. The low permeance facings are also effective in resisting water vapor transmission.

COMPOSITION & MATERIALS

The product is composed of white, uniformly textured, inorganic fibrous glass and formed with a formaldehyde-free binding agent.

APPLICATION

The National Electrical Code prohibits installation of insulation over or within 3” (76 mm) of recessed light fixtures, unless approved insulated ceiling (IC) lighting fixtures are used. Insulation should be kept clean and dry at all times.

QUALITY ASSURANCE

CertainTeed’s commitment to quality and environmental management has ensured the registration of the Athens, Chowchilla and Kansas City plants to ISO 9001 and ISO 14001 standards.



TECHNICAL DATA

APPLICABLE STANDARDS, CODE COMPLIANCE

Model Building Codes:

- ICC
- California Quality Standards

Material Standards:

- ASTM C553 Type I
- ASTM C665 Type II, Class A, Category 1 (PSK) Type III, Class A, Category 1 (FSK)
- GREENGUARD® GOLD certified

FIRE RESISTANCE

Surface Burning Characteristics:

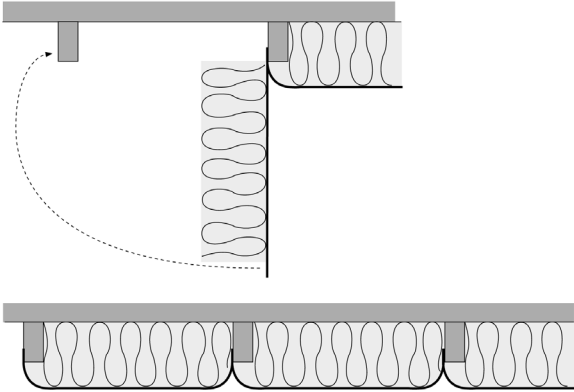
- ASTM E84, UL 723
- Max. Flame Spread Index: 25
- Max. Smoke Developed Index: 50

PHYSICAL / CHEMICAL PROPERTIES

| PROPERTY (UNIT) | TEST | VALUE |
|--------------------------|------------------------|----------------------------------------------------------|
| Thermal Performance: | ASTM C177 or ASTM C518 | See table on other side |
| Maximum Use Temperature: | ASTM C411 | Max. 250°F (121°C) |
| Water Vapor Permeance: | ASTM E96 | ≤ 0.02 perms 1.1 ng/Pa·s·m² Class I vapor retarder |
| Water Vapor Sorption: | ASTM C1104 | ≤ 5% by weight |
| Noncombustability: | ASTM E136 | Pass |
| Odor Emission: | ASTM C1304 | Pass |
| Corrosion Resistance: | ASTM C665 | Pass |
| Fungi Resistance: | ASTM C1338 | Pass |

INSTALLATION

Position the batt and staple through the back surface of the extended flange to the side of the joist. Swing the batt into the cavity, fold the opposite flange over the other side of the next joist, and staple the flange to it, spacing staples approximately every 8" (200 mm) with beginning and ending staples about 1" (25 mm) from the end of the flange. This installation allows full thickness recovery of R-19 insulation with 2 x 4 construction. For R-30 insulation in 2 x 6 construction the insulation is compressed to approximately 8-1/2" (216 mm), which results in an installed R-Value of 28 (4.93 RSI). In each case, the insulation should hang approximately 3" (75 mm) below the bottom of the joists. These installation recommendations are general in nature. Other methods are acceptable. Please consult your contractor for recommendations best suited to the application.



AVAILABLE SIZES

Available standard sizes are listed in the table below. Contact CertainTeed for non-standard sizes.

| R-VALUE | | THICKNESS | | WIDTH | | LENGTH | |
|---------|------|-----------|-----|-------|-----|--------|------|
| R | RSI | IN | MM | IN | MM | IN | MM |
| 19 | 3.35 | 6¼ | 159 | 23 | 584 | 93 | 2362 |
| 19 | 3.35 | 6¼ | 159 | 23 | 584 | 96 | 2438 |
| 30* | 5.28 | 10 | 254 | 24 | 610 | 48 | 1219 |

* FSK only

WARRANTY

Refer to CertainTeed's Limited One Year Warranty for Non-Residential Fiberglass Building Insulation (30-29-047).

MAINTENANCE

No maintenance required.

AVAILABILITY AND COST

For availability and cost, contact your local contractor or distributor, or call our Customer Experience team at (800) 233-8990.

TECHNICAL SERVICES

Technical assistance can be obtained from your local CertainTeed sales representative and our Customer Experience team, 800-233-8990, or GetHelp@saint-gobain.com.

USGBC® and the related logo are trademarks owned by the U.S. Green Building Council and are used with permission.



CertainTeed

CEILINGS • DECKING • FENCE • GYPSUM • INSULATION • RAILING • ROOFING • SIDING • TRIM
20 Moores Road, Malvern, PA 19355 800-233-8990 certainteed.com