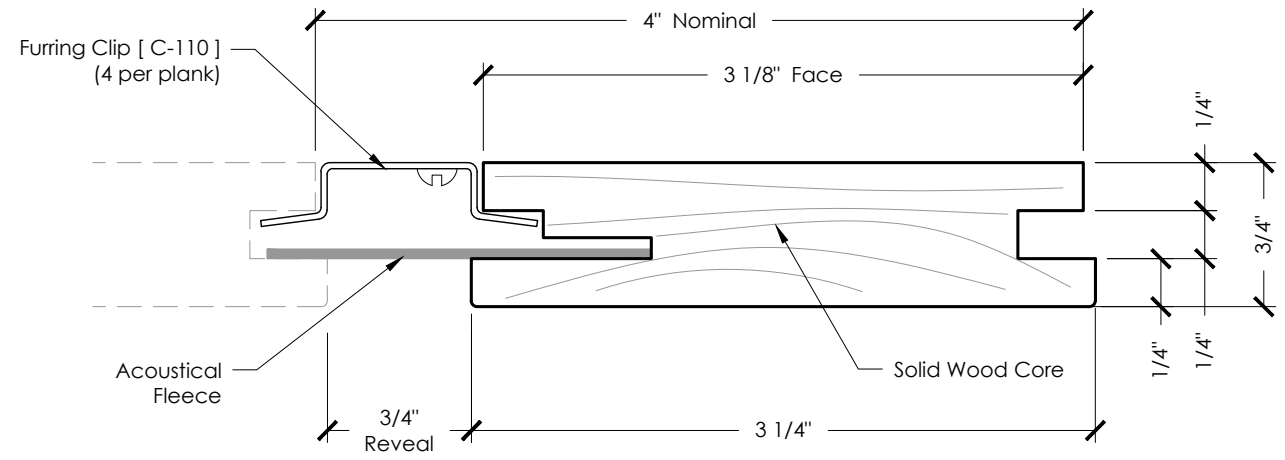
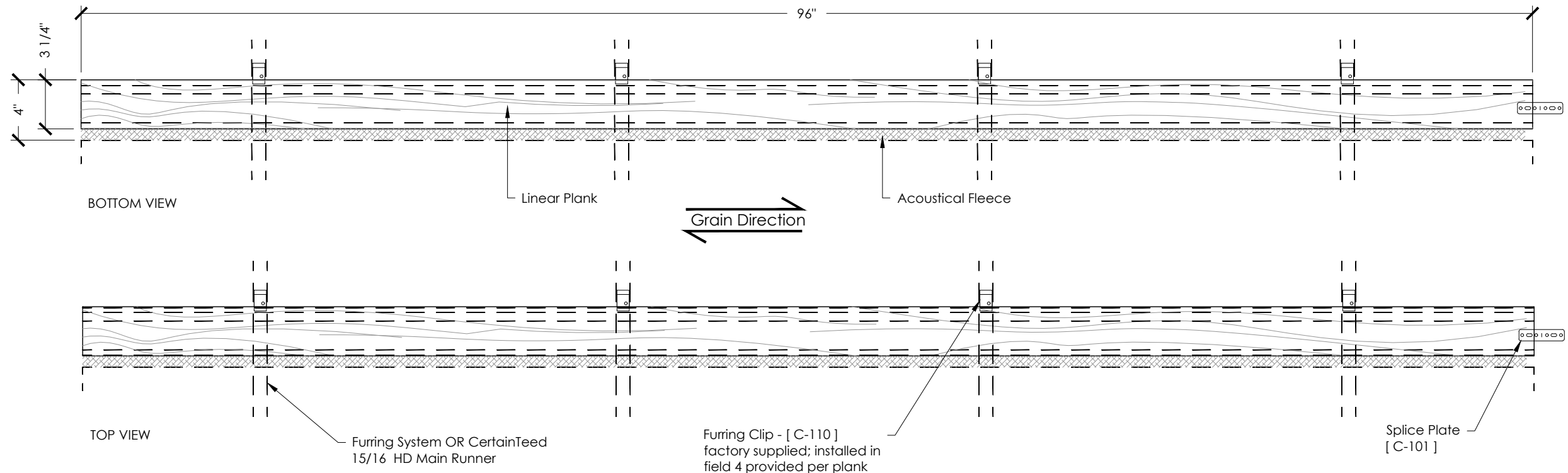


Type:	3110L4 Linear Plank (Felt Reveal - Furring Clip)
Module:	Nominal Size (4" x 96")
Core:	3/4" Solid Wood
Veneer/Stain:	Solid Wood species
Finish:	Clear Topcoat, 20% sheen
Rating:	Class C per ASTM E84
Mounting:	Furring Clip [C-110], Progressively Installed
Accessories:	Acoustical Fleece



A 3110L4 Linear Plank Section View
PD-01

Scale: 1'-0" = 1'-0"



B 3110L4 Linear Plank Top & Bottom View
PD-01

Scale: 1-1/2" = 1'-0"

QTY.:
--

Does Not Include Closet Stock or Spares

- NOTES:**
- Dimensions are to be field verified prior to fabrication. Changes in dimensions may result in quantity adjustments.
 - Closet stock and spares are not included and must be added to quantity shown if needed.
 - Refer to PD-10 for installation details.
 - Seal cut ends with factory provided sealant

Only the products that are identified as such on this document are FSC® certified

ARCHITECT

CUSTOMER

REPRESENTATIVE

DATE	REVISIONS	#

PROJECT TITLE

PROJECT LOCATION

SHEET REFERENCE

PRODUCT

SHEET TITLE
PRODUCTION SPECIFICATIONS
Linear Plank Furring Clip -
Felt Reveal

DATE	DRWN	CHECK
4/13/20	P.I.	D.T.

SHEET NO.

PD-01

ARCHITECT

CUSTOMER

REPRESENTATIVE

DATE									
REVISIONS									
#									

PROJECT TITLE

PROJECT LOCATION

SHEET REFERENCE

PRODUCT

SHEET TITLE
PRODUCT TOLERANCES &
PRODUCT NOTES

DATE	DRWN	CHECK
4/13/20	P.I.	D.T.

SHEET NO.

PD-09

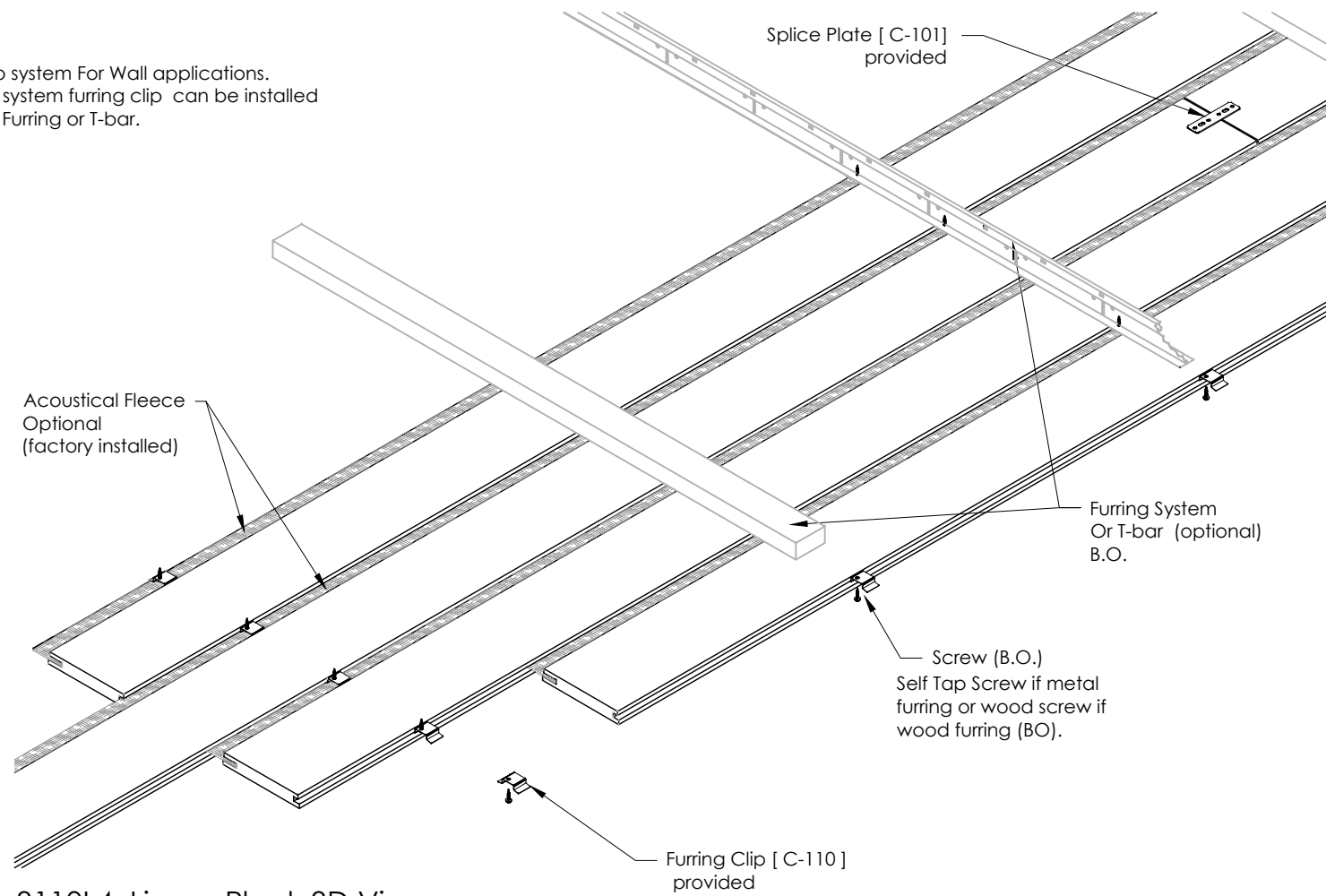
Linear Wood - Rectangular boards oriented horizontally.	
Blade Length: ± 0.062" (1/16")	Blade Width: ± 0.062" (1/16")
Board Thickness	± 0.062" (1/16")
Linear Reveal Width (factory assembled panels)	± 0.062" (1/16")
Bowing (Up or down in 24") (A)	≤ 0.062" (1/16")
Crook (Deviation in 24")	± 0.062" (1/16")
Cupping (6" wide board)	± 0.031" (1/32")
End-cut squareness	± 0.25"
(A)= Supported on 24" centers	

NOTES:
 - Dimensions are to be field verified prior to fabrication. Changes in dimensions may result in quantity adjustments.
 - Closet stock and spares are not included and must be added to quantity shown if needed.

Notes:

- 1.** All dimensions are shown for reference and will have to be modified for field installation.
- 2.** Fixtures to be hung independently from ceiling support system. Fixtures may include but are not limited to - light fixtures, HVAC diffusers, sprinkler heads and/or piping, speakers, security cameras, components, etc.
- 3.** Utilize the use of cut-offs where appropriate - product quantities based on partial products being used.
- 4.** Contractor to follow CISCA guidelines for hanging grid system. Our ceilings are heavier than typical ceiling products. Main grid "T" recommended at 2'-0" on center.
- 5.** Our wood ceiling reflected plans will include penetrations of limited light fixtures and HVAC registers only when the size of the wood is impacted. Other penetrations, including but not limited to sprinklers, security cameras audio-visual, etc.. will not be included in our drawing set due to the fact that we will not claim understanding and liability of placement or code requirement.
- 6.** Ceiling fixtures shown for reference only - lights and mechanical elements by others.
- 7.** See Product Master Sheets for edge condition details.
- 8.** All products should be reviewed before installation to avoid undesirable visual pattern because of natural color and grain variations.
- 9.** All product field cut must be sealed with a clear sealer or stained then sealed.
- 10.** CertainTeed 15/16" & 9/16"HD T-Bar sold separately visit www.certainteed.com/suspension-systems/ for more information and purchasing options.

NOTE:
 - Furring Clip system For Wall applications.
 - For ceiling system furring clip can be installed using either Furring or T-bar.



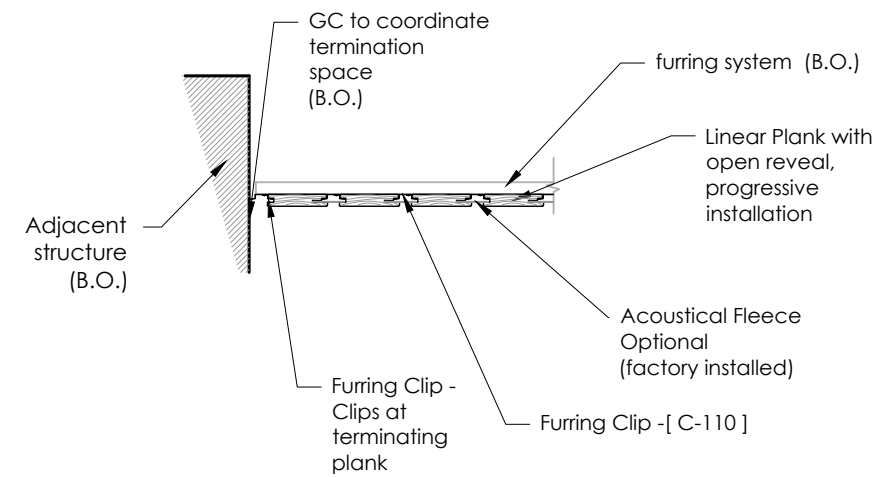
A 3110L4 Linear Plank 3D View
 PD-10 Scale: NTS



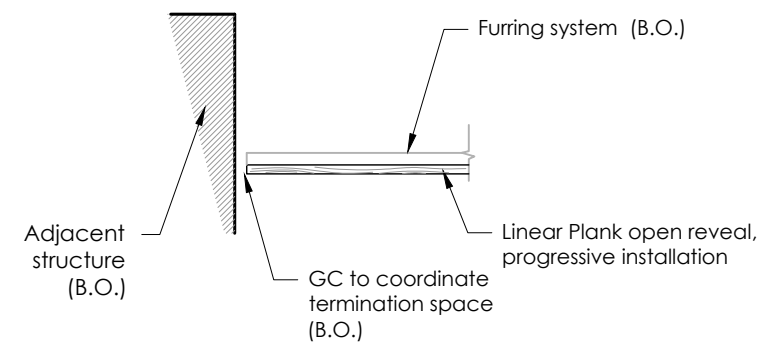
Furring clip [C-110]
 Heavy Duty Steel,
 Plank Grid Engagement Clip.
 Each Plank requires a furring clip 24" O.C. - a minimum of two Furring clips per plank must be secured to the furring.

Splice Plate [C-101]
 End to end plank stabilizer.

B 3110L4 Linear Plank Hardware 3D View
 PD-10 Scale: NTS



C 3110L4 Section Detail
 PD-10 Scale: 1" = 1' 0"



D 3110L4 Section Detail
 PD-10 Scale: 1" = 1' 0"

DATE	REVISIONS	#

PROJECT TITLE

PROJECT LOCATION

SHEET REFERENCE

PRODUCT

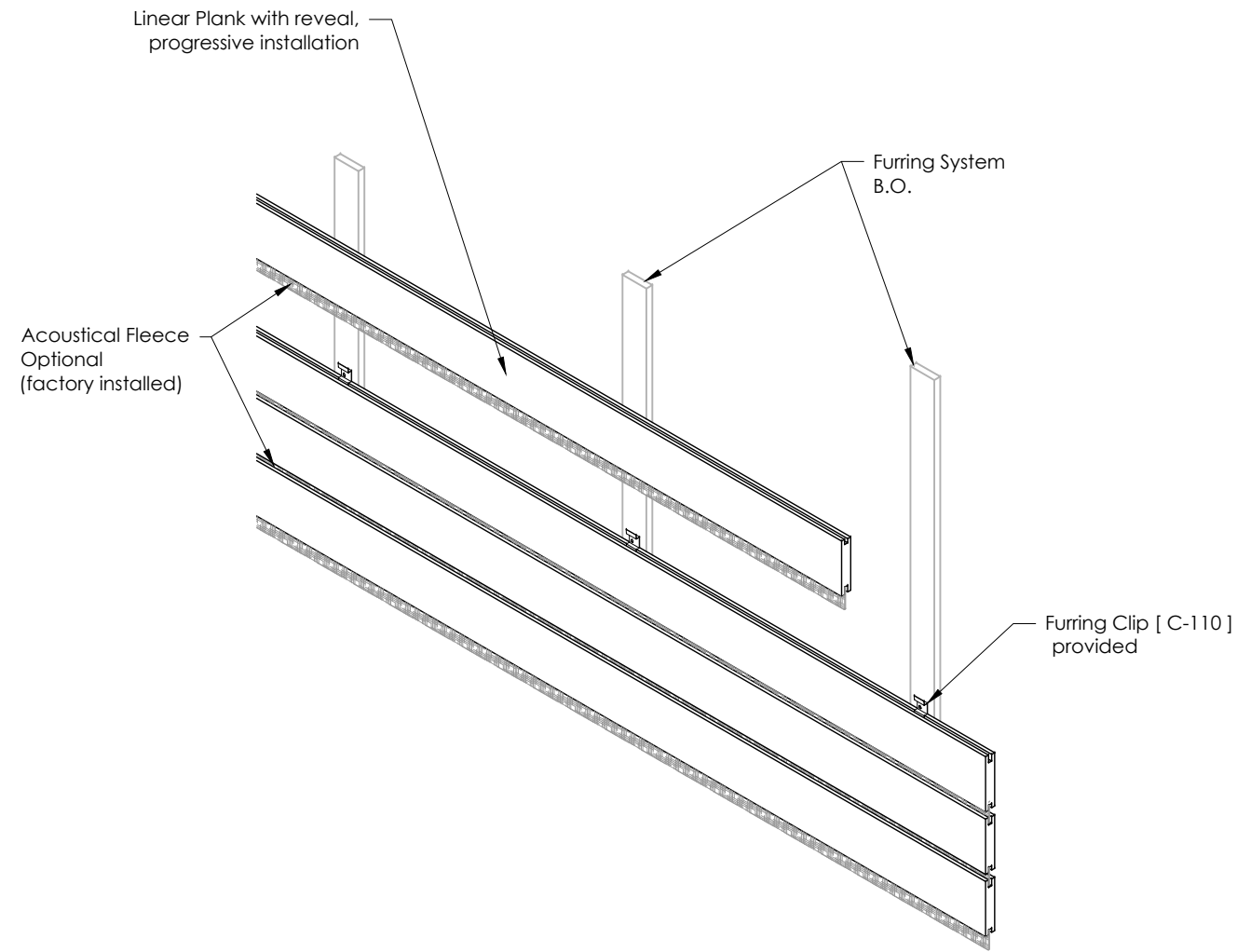
SHEET TITLE
 LINEAR PLANK (Furring Clip)
 INSTALLATION DETAIL

DATE	DRWN	CHECK
4/13/20	P.I.	D.T.

SHEET NO.

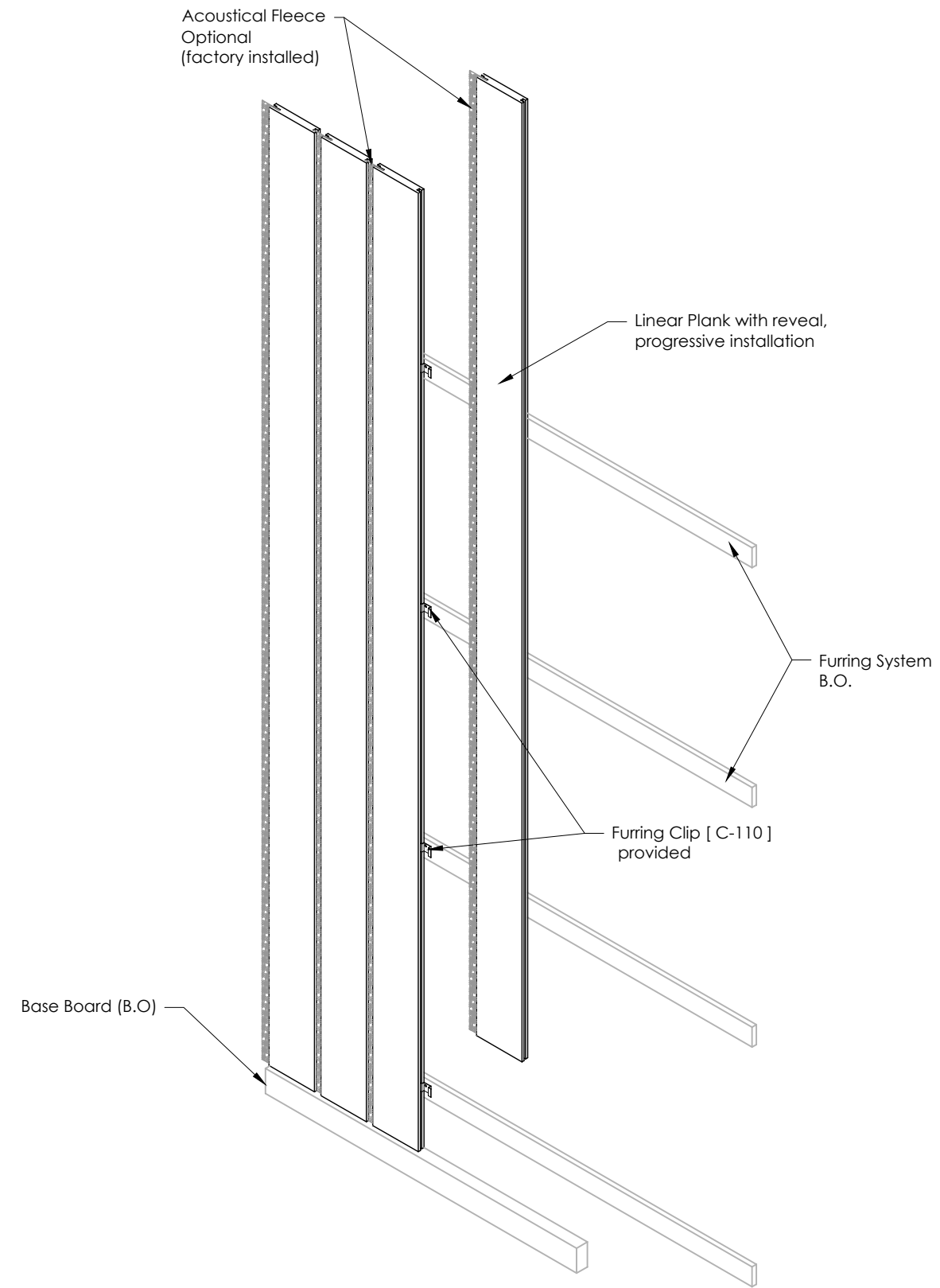
PD-10

These drawings show typical conditions for installing the CertainTeed Ceilings product shown. They should not be construed as a substitute for an architectural or engineering design and do not reflect the unique requirements of local codes, laws, statutes or regulations that may be applicable for a specific installation. CertainTeed Ceilings assumes no liability for the accuracy or completeness of the drawings for a specific installation or the fitness of the drawings for a particular purpose. The user is advised to consult with local licenced design professionals in order to assure compliance with all legal requirements. CertainTeed Ceilings is not licenced to provide professional engineering or architectural services.



A 3110L4 Linear Plank Furring Clip Horizontal installation
 PD-11

Scale: NTS



A 3110L4 Linear Plank Furring Clip Vertical installation
 PD-11

Scale: NTS

ARCHITECT

CUSTOMER

REPRESENTATIVE

DATE					
REVISIONS					
#					

PROJECT TITLE

PROJECT LOCATION

SHEET REFERENCE

PRODUCT

SHEET TITLE
 LINEAR PLANK (Furring Clip)
 INSTALLATION DETAIL

DATE	DRWN	CHECK
4/13/20	P.I.	D.T.

SHEET NO.

PD-11

DATE	REVISIONS	#

PROJECT TITLE

PROJECT LOCATION

SHEET REFERENCE

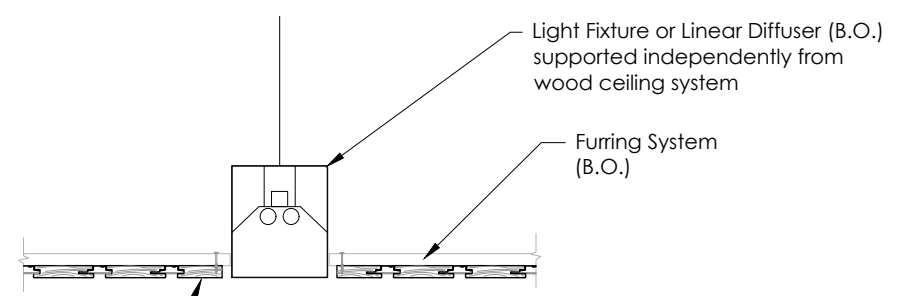
PRODUCT

SHEET TITLE
LINEAR PLANK (Furring Clip)
INSTALLATION DETAIL

DATE	DRWN	CHECK
4/13/20	P.I.	D.T.

SHEET NO.

PD-12

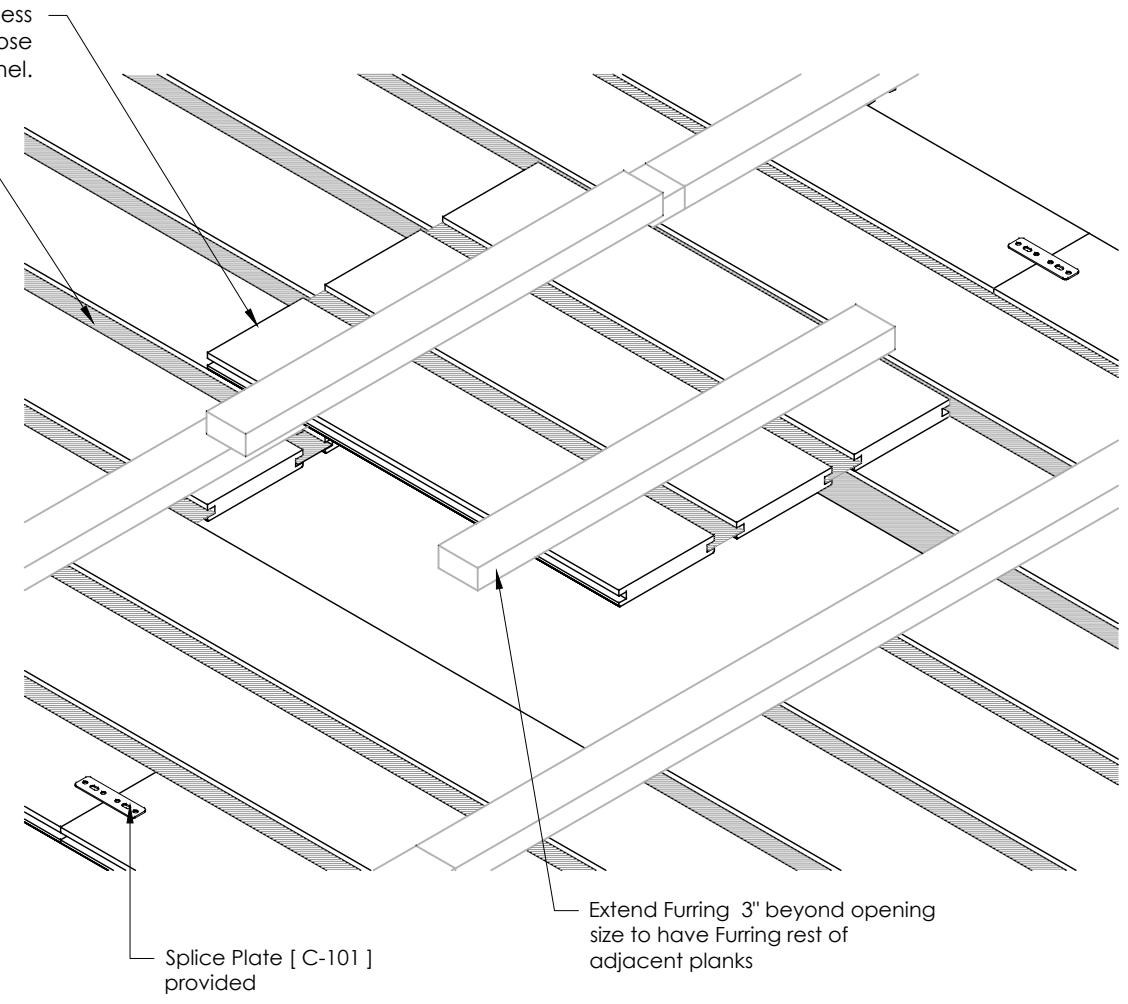


Field cut planks per diffuser or light fixture, seal all cut ends with factory supplied touch up sealer.

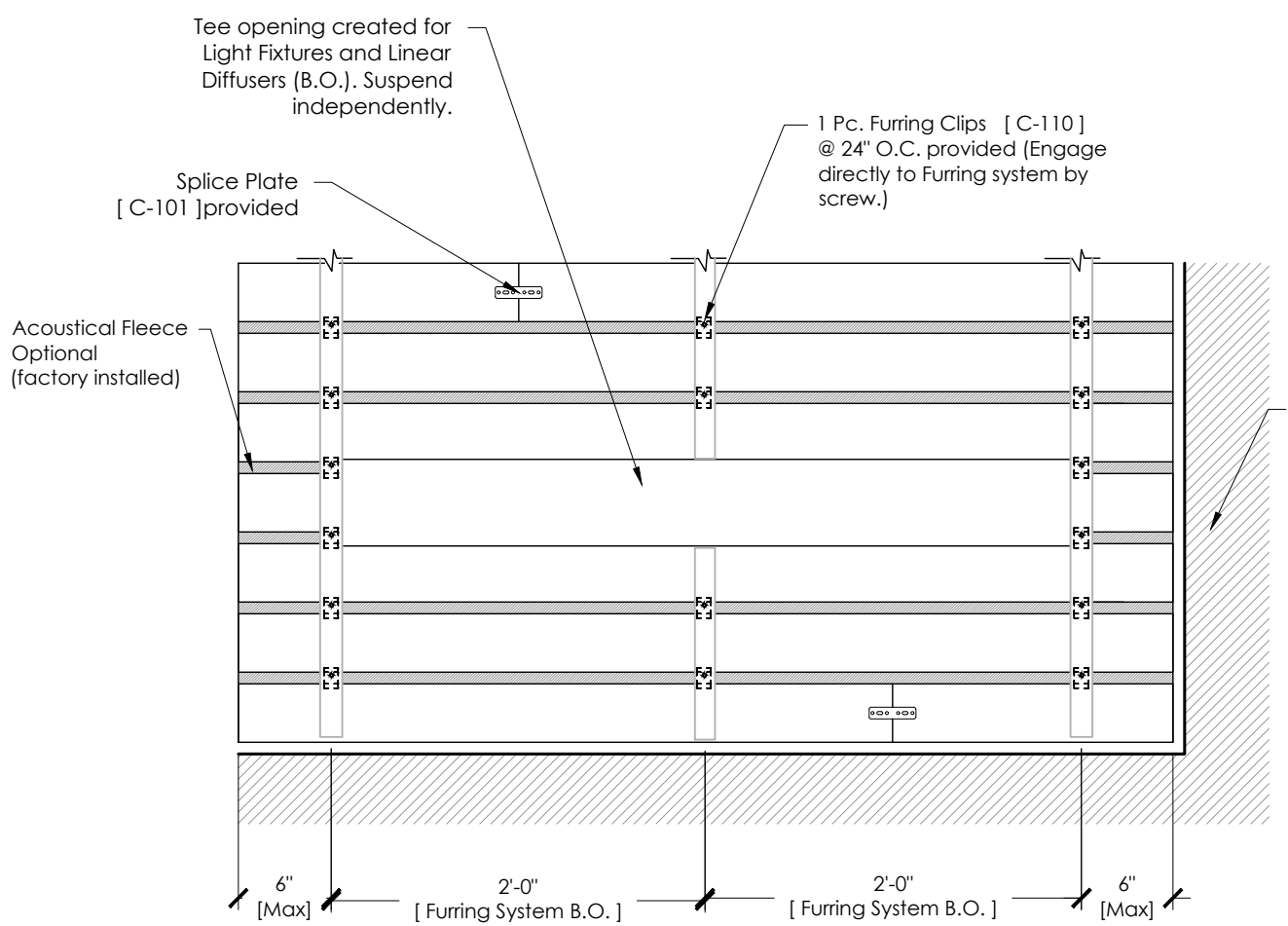
A 3110L4 Section Detail - Light Fixture Installation
Scale: 1" = 1' - 0"

Cut linear planks to desired access panel size. Attach planks to loose Furring to create access panel.

Acoustical Fleece Optional (factory installed)



C 3110L4 Linear Plank Access Panel
Scale: NTS



B 3110L4 Plan Detail - Light Fixture Installation
Scale: 1" = 1' - 0"

These drawings show typical conditions for installing the CertainTeed Ceilings product shown. They should not be construed as a substitute for an architectural or engineering design and do not reflect the unique requirements of local codes, laws, statutes or regulations that may be applicable for a specific installation. CertainTeed Ceilings assumes no liability for the accuracy or completeness of the drawings for a specific installation or the fitness of the drawings for a particular purpose. The user is advised to consult with local licenced design professionals in order to assure compliance with all legal requirements. CertainTeed Ceilings is not licenced to provide professional engineering or architectural services.