

Gyptone® BIG™

Walls Installation Manual

DESIGN AND SPECIFICATIONS

Use of the Product

Gyptone BIG is a large-format, perforated gypsum acoustical panel that allows the creation of wall and ceiling surfaces without visible joints or breaks.

Overall Depth of System

Minimum plenum depth with Gyptone® Z-channel and C-channel is approximately 2".

Surfaces

The gypsum surface is intended to be painted after installation. Paint application must be made with a short nap roller (1/4" recommended). **DO NOT SPRAY PAINT PANELS AS IT WILL SUBSTANTIALLY IMPAIR THE ACOUSTIC PERFORMANCE.** Joints should be taped, finished, and sanded. See page 3 for additional information.

Suspension System

Gyptone BIG can be installed on CertainTeed Z-Channel and C-Channel, furred out from an existing structure. In addition, other Z- and C-channels can be used, provided they provide a minimum surface dimension of 1.5 inches.

Stability

Gyptone BIG is to be installed and used in rooms with relative humidity not exceeding 70% or temperatures exceeding 104 degrees F. Gyptone BIG can be curved (dry) to a maximum 20-foot radius if installed on pre-shaped framing.

Weight

Gyptone BIG products ≈ 1.6 lbs./SF

Cleaning

Can be cleaned with a damp cloth depending on the final surface treatment. Do not use detergents.

Maintenance

Damages on edges or surfaces can be repaired by filling and painting.

Installation of Gyptone® BIG™ Walls

Read the entire manual before installing.

Acoustic Walls, New Partitions

- 1 Ceiling structure/ floor structure
- 2 Wall structure
- 3 GK C-Channel profile
- 4 GK Z-Channel profile
- 5 2.5" CertainTeed Insulation (unfaced)
- 6 CertainTeed Gypsum Board
- 7 Gyptone BIG Board

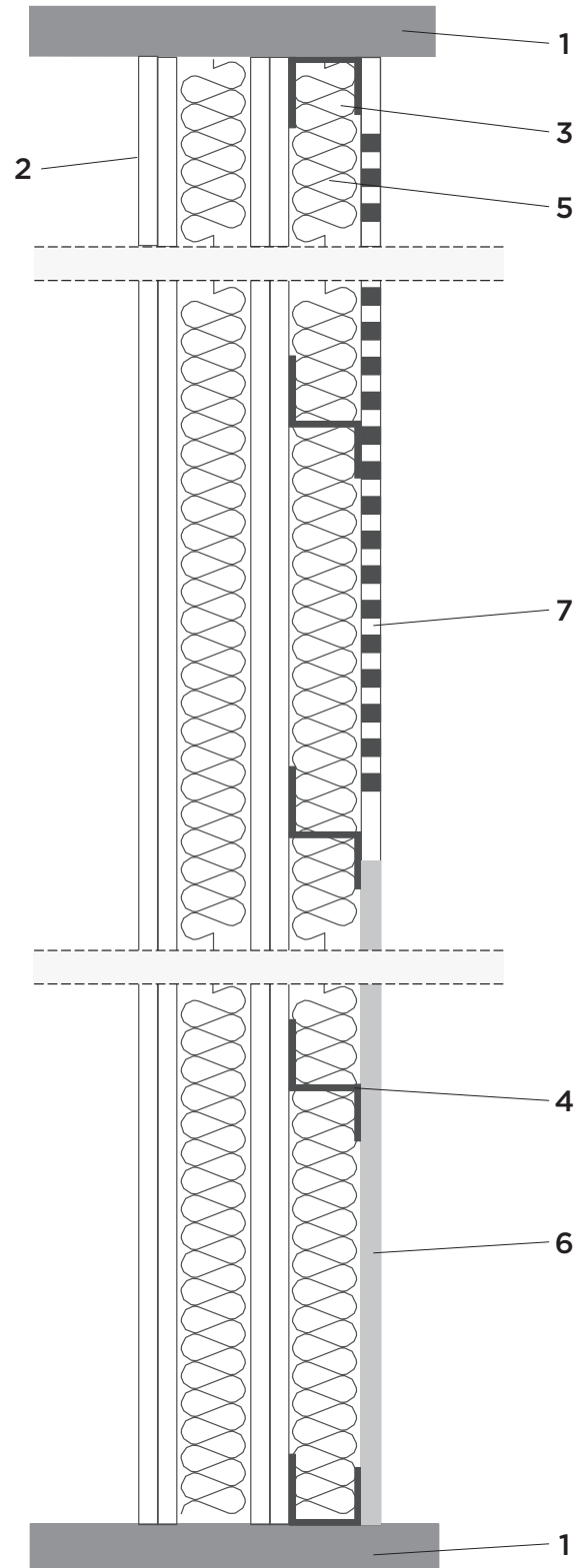
Installation

- Choose a suitable wall structure based on meeting the necessary requirements for fire, light, sound insulation and wall height. The chosen wall is built and used as a base for the Gyptone acoustic wall.
- Frame the wall structure with **GK-Channel** with distance between screws not exceeding 12 inches.
- Attach the **GK Z-Channel** horizontally across the wall structure with the distance between the screws not exceeding 12 inches.
- The distance between the horizontal **GK Z-Channel** sections is 300 mm (≈11-13/16").
- Fit 2.5 inches of **CertainTeed Insulation (unfaced)** between the Z-Channel sections.
- Attach **Gyptone BIG** standing vertically. Locate the boards so that short board edges are directly over the mid-point of the Z-Channel (screw surface).
- Consider attachment of **CertainTeed Gypsum Board** to lower part of the wall where incidental impact may occur.
- Screw distance is a maximum of 8 inches (where possible) on board edges.
- Screw distance is a maximum of 12 inches in the body of the board.
- Screws for attachment in the perforated area of Gyptone BIG and should be **QSTR 25**.

Finishing

- Use **CertainTeed All-Purpose Joint Compound** (or equivalent) and **Marco Spark-Perf Paper Tape** (or equivalent) for all joints.
- All joints, screw holes and edges should be finished until a smooth, even surface is achieved.
- Paint application is one prime coat plus two finish coats applied with a 1/4" nap roller.

NOTE: Perforated Gyptone products must not be spray-painted. Taping/finishing must be done by hand (not with a taping gun)



Installation of Gyptone® BIG™ Walls

Acoustic Walls, Existing Structures

- 1 Wall structure
- 2 GK C-Channel profile
- 3 GK Z-Channel profile
- 4 2.5" CertainTeed Insulation (unfaced)
- 5 CertainTeed Gypsum Board
- 6 Gyptone BIG Board

Installation

- Frame the wall structure with **GK C-Channel** with distance between screws not exceeding 12 inches.
- Attach the **GK Z-Channel** horizontally across the wall structure with the distance between the screws not exceeding 12 inches.
- The distance between the horizontal **GK Z-Channel** sections is 300 mm ($\approx 11-13/16"$).
- Fit 2.5 inches of **CertainTeed Insulation (unfaced)** between the Z-Channel sections.
- Attach **Gyptone BIG** standing vertically. Locate the boards so that short board edges are directly over the mid-point of the Z-Channel (screw surface).
- Consider attachment of **CertainTeed Gypsum Board** to lower part of the wall where incidental impact may occur.
- Screw distance is a maximum of 8 inches (where possible) on board edges.
- Screw distance is a maximum of 12 inches in the body of the board.
- Screws for attachment in the perforated area of Gyptone BIG and should be **QSTR 25**.

Finishing

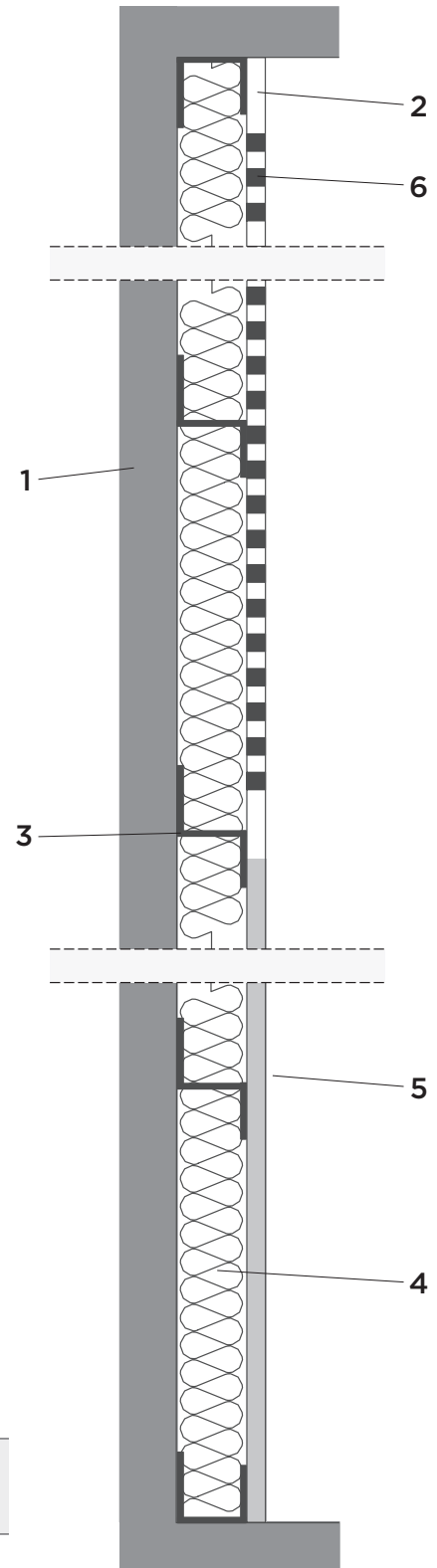
- Use **CertainTeed All-Purpose Joint Compound** (or equivalent) and **Marco Spark-Perf Paper Tape** (or equivalent) for all joints.
- All joints, screw holes and edges should be finished until a smooth, even surface is achieved.
- Paint application is one prime coat plus two finish coats applied with a 1/4" nap roller.

NOTE: Perforated Gyptone products must not be spray-painted. Taping/finishing must be done by hand (not with a taping gun)

Accessory Consumption Table for Walls

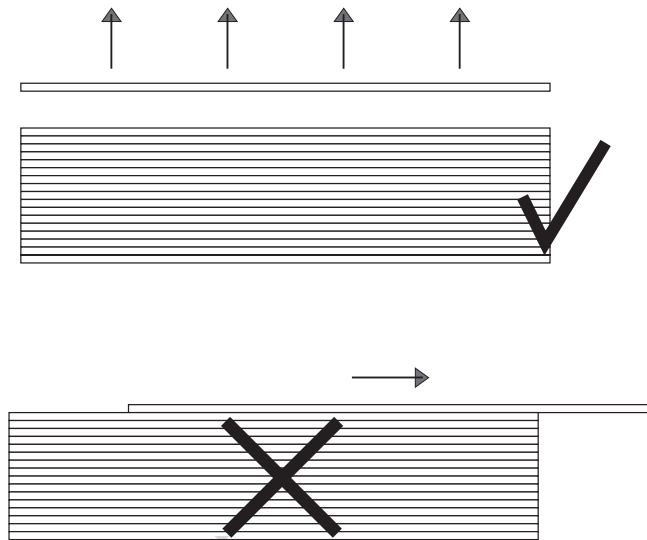
(new / existing)

C-Channel		118 L.F./bundle	As required to frame perimeter of wall on all edges
Z-Channel		98 L.F./bundle	Subtract the length of wall from total square footage of wall. The result is the approximate total Z-Channel required in L.F.



Installation of Gyptone® BIG™ Walls

Gyptone® BIG™ Boards are to be lifted vertically off the stack



NOTE: Do not slide panels as damage to acoustic tissue will likely result.