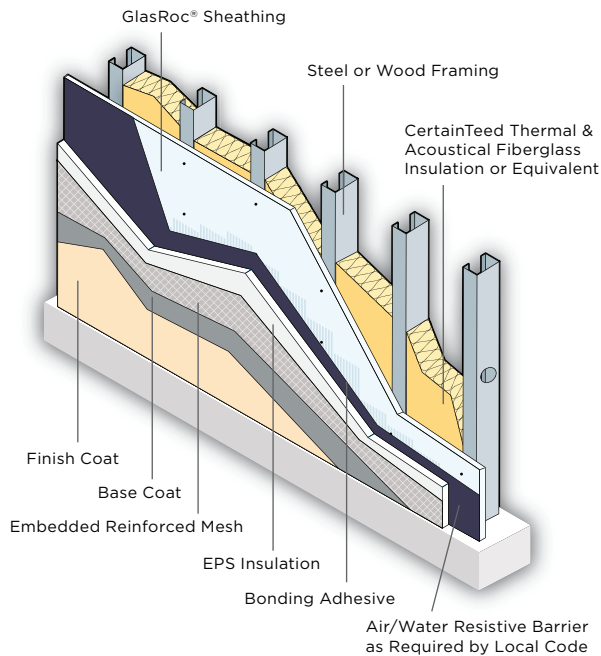


GlasRoc® Sheathing

EXTERIOR WALL SYSTEMS



▶ As a component of an EIFS System, GlasRoc® Sheathing offers:

- Superior water shed and surface water resistance.
- Excellent total water absorption resistance.
- 12-month resistance to UV and environmental exposure.
- Improved insulation adhesion due to integrated board surface.
- Approved substrate by the major EIFS manufacturers.

EXTERIOR INSULATION AND FINISH SYSTEMS (EIFS) APPLICATIONS

SUPERIOR STRENGTH

GlasRoc® Sheathing integrally bonds its engineered glass mat to the moisture resistant core, resulting in a superior protective sheathing that will perform in all climates.

DIMENSIONAL STABILITY

GlasRoc Sheathing resists delamination, rippling, buckling and sagging caused by environmental conditions, such as freeze/thaw, heat and humidity, and direct UV exposure.

MOISTURE RESISTANCE

When properly installed, GlasRoc Sheathing blocks liquid water without inhibiting water vapor transmission. The result is a protective surface that is extremely resistant to water damage.

EASY TO INSTALL

GlasRoc Sheathing is easy to handle and install. No special tools are required. Score it with a standard utility knife. Install it with standard sheathing fasteners.

REFERENCED STANDARDS

- ASTM C514: Specification for Nails for the Application of Gypsum Board
- ASTM C954: Specification for Steel Drill Screws for the Application of Gypsum Panel Products or Metal Plaster Bases to Steel Studs from 0.33" (8.4 mm) to 0.112" (2.84 mm) in Thickness
- ASTM C1002: Standard Specification for Steel Drill Screws for the Application of Gypsum Panel Products or Metal Plaster Bases
- ASTM C1177: Standard Specification for Glass Mat Gypsum Substrate for Use as Sheathing
- ASTM C1280: Standard Specification for Application of Gypsum Sheathing
- ASTM C1397: Practice for Application of Class PB Exterior Insulation and Finish Systems
- ASTM E84 (CAN/ULC-S102): Test Method for Surface Burning Characteristics of Building Materials
- ASTM E96: Test Methods for Water Vapor Transmission of Materials
- ASTM E119 (CAN/ULC-S101): Test Method for Fire Tests of Building Construction and Materials