

# CertainTeed

## Veneer Plaster Base

### Gypsum Board

#### Product Data and Submittal

#### Product Description

CertainTeed Veneer Plaster Base is an interior gypsum board with a specially formulated face paper for use under gypsum veneer plaster. It consists of a solid set, fire-resistive gypsum core enclosed in a highly absorptive paper surface. CertainTeed Veneer Plaster Base is available in a variety of lengths and widths.

#### Basic Uses

CertainTeed Veneer Plaster Base is ideal for virtually any type of one- or two-coat veneer plaster system. It can be used in commercial and residential wall and ceiling construction, including wood or steel framing, or furring and masonry.

#### Advantages

- Rapid installation reduces overall construction time.
- Significantly lower cost than regular plastering with equally attractive surface appearance.
- Consistently high quality, defect-free board.
- Uniformly flat, attractive appearance.
- High edge hardness.
- No wavy edges, warps, bows or deformities.
- Uniform high-strength cores eliminate crumbling, cracking.

- Edge tapers consistent to form perfect joints.

#### Limitations

- For interior use only.
- Avoid exposure to continuous moisture.
- Not recommended for continuous exposure to temperatures exceeding 125° F (52° C).
- Framing spacing is limited and partition heights reduced compared to some standard constructions.
- Boards should be stacked flat with care taken to prevent sagging or damage to edges, ends and surfaces.
- Storing board lengthwise, leaning against the framing is not recommended.
- Boards should be carried, not dragged, to place of installation to prevent damaging finished edges.

#### Product Data

**Thickness:** 5/8" (15.9 mm) Type X

**Width:** 4' (1220 mm)

**Length:** 8' (2440 mm), 12' (3660 mm)

**Weight (approx.):**  
5/8" (15.9 mm) – 2.25 lb/ft<sup>2</sup> (11.0 kg/m<sup>2</sup>)

**Core:** Gypsum Type X (noncombustible)

**Edge:** Tapered, paper bound – factory finished

**End:** Square – factory cut

**Packaging:** Two pieces per bundle, face-to-face and end-taped.

Special widths, lengths or edges may be available on special order. Consult your nearest CertainTeed sales representative.

#### Technical Data

##### Surface Burning Characteristics

All CertainTeed Gypsum Board has a Flame Spread rating of 15 and Smoke Developed rating of 0, in accordance with ASTM E84, (UL 723, NFPA 255, CAN/ULC-S102).

##### Fire Resistance

Fire resistance tests are conducted in accordance with ASTM E119, (ANSI/UL 263, NFPA 251, CAN/ULC-S101) and no warranty is made other than conformance to the standard under which the assembly was tested. Minor discrepancies may exist in the values of ratings, attributable to changes in materials and standards, as well as differences between testing facilities. Assemblies are listed as “combustible” (wood framing) and “noncombustible” (concrete and/or steel construction).

CertainTeed Veneer Plaster Base Type X is Classified by Underwriters Laboratories Inc. for USA and Canada.

Continued on back

Job Name

Contractor

Date

Products Specified:

Submittal Approvals  
(Stamps or Signatures)

**CertainTeed**  
SAINT-GOBAIN

Fire ratings equivalent to those of drywall systems can be obtained with appropriate application of veneer plaster, framing member size and spacing, and fasteners. Underwriters Laboratories tests have proven that joint finishing is not required for the rating in certain assemblies. For fire resistance ratings, refer to the Gypsum Association Fire Resistance Design Manual GA-600 and UL /cUL/ULC Fire Resistance Directory.

### Applicable Standards and References

- ASTM C1396
- ASTM C843
- ASTM C844
- CAN/CSA-A82.27
- CAN/CSA-A82.31
- Gypsum Association - Veneer Plaster
- ICC International Building Code (IBC)
- ICC International Residential Code (IRC)
- National Building Code of Canada (NBCC)
- GREENGUARD Children & Schools<sup>SM</sup> Certified

## Installation

### Recommendations

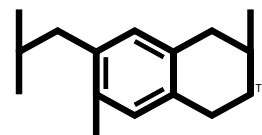
Installation of CertainTeed Veneer Plaster Base should be consistent with methods described in the standards and references noted.

### Decoration

Temperature, humidity, water's mineral content and variances in aggregates can cause shading discoloration in plaster. Therefore, veneer plaster should not be considered a final finish; plaster should be painted or decorated. Consult paint manufacturers for compatible products.

## Notice

The information in this document is subject to change without notice. CertainTeed assumes no responsibility for any errors that may inadvertently appear in this document.



Health Product  
DECLARATION

The Health Product Declaration™ and logo is owned by the Health Product Declaration Collaborative™ and is used with permission.



### ASK ABOUT ALL OF OUR OTHER CERTAINTEED® PRODUCTS AND SYSTEMS:

ROOFING • SIDING • TRIM • DECKING • RAILING • FENCE  
GYPSUM • CEILINGS • INSULATION

[www.certainteed.com](http://www.certainteed.com) <http://blog.certainteed.com>

CertainTeed Corporation  
20 Moores Road  
Malvern, PA 19355

Professional: 800-233-8990  
Consumer: 800-782-8777

