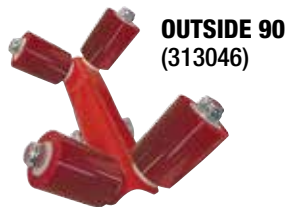




Professional CertainTeed Tools

CertainTeed Rollers

Pliable roller wheels press corners firmly and accurately into place, creating an absolute bond to the drywall. Using rollers makes drywall corner installations more accurate, faster and easier.



OUTSIDE 90
(313046)



ONE SIDED
(313047)

CertainTeed Double Barrel Hopper (315502)

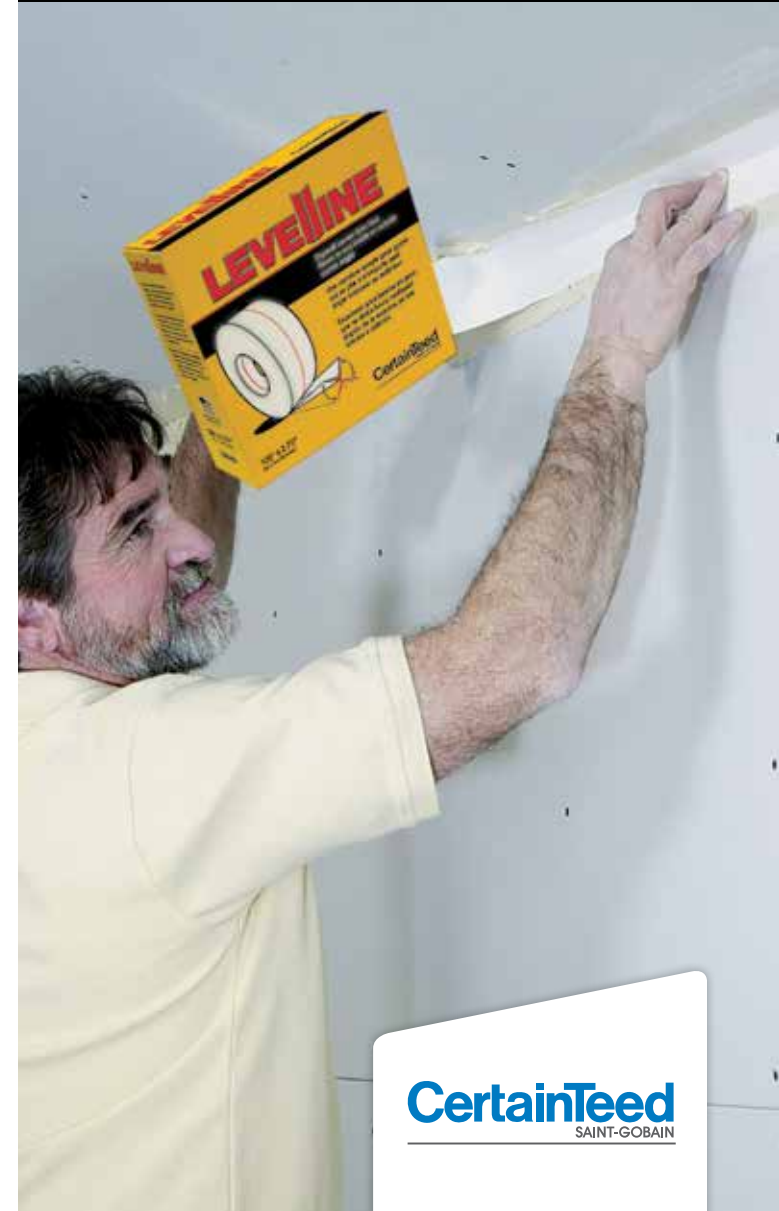
The Double Barrel Hopper is set up for all angles, all the time. Install off-angles, inside 90s and outside 90s. No time-consuming adjustments. High density polyurethane for durability and easy cleanup.



CertainTeed
SAINT-GOBAIN
Gypsum

CertainTeed
LEVELLINE
Corner Trim

Tapered Profile Design – makes finishing fast and easy.



ASK ABOUT ALL OF OUR OTHER CERTAINTEED[®] PRODUCTS AND SYSTEMS:

ROOFING • SIDING • TRIM • DECKING • RAILING • FENCE
GYPSUM • CEILINGS • INSULATION

Professional: 800-233-8990 Consumer: 800-782-8777

© 07/16 CertainTeed Corporation, Printed in the USA Rev. 11-2016

CertainTeed
SAINT-GOBAIN



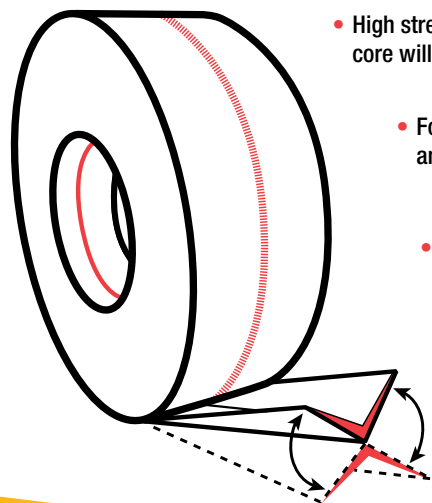
Get the perfect inside or outside corner of any angle of any length that will look straight and true.

CertainTeed LEVELLINE provides perfect corners by fitting every angle, every time. Applied with joint compound, it has a uniform, strong, structural bond due to its paper backing. Faced with a tight fibered, high quality paperboard and backed with a joint tape paper, it's ideal for applying paint or texture.

- Tapered copolymer core
- Memory-free hinge
- Excellent standout strength for a truer, straighter run

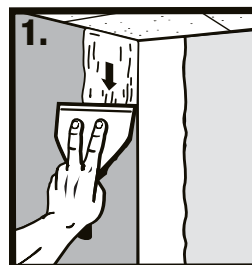


2.75" x 100'
(69.9 mm x 30.5 m)
Available in individual rolls or a 12 roll case

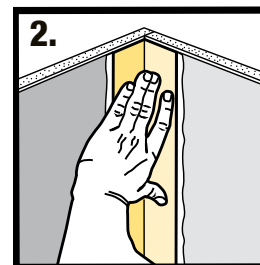


- High strength, tapered, copolymer core will not split or dent
- Formulated Surface Paper accepts any finish and resists abrasion
- Memory-Free Hinge adjusts to any angle, eliminates pre-creasing, pre-measuring and allows instant application
- LEVELLINE flexes to any inside or outside corner angle required

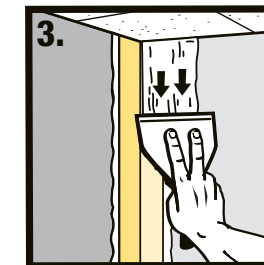
Directions:



Step (1) Apply taping or all-purpose joint compound to corner.



Step (2) Press LEVELLINE trim into position and straighten.



Step (3) Using a 4" (100 mm) finishing knife, remove excess mud and let dry.



Step (4) Use a 6" (150 mm) finishing knife to skim over corner, let dry. Sand and finish.

LEVELLINE

Visit certainteedcorners.com for detailed installation instructions.