

PERFORMA®

Cashmere® Style Edge
VOC Compliant

LOW
VOC

\$\$\$



LEED® v4

- MR: Environmental Product Declarations (EPDs)
- MR: Sourcing Raw Materials
- MR: Material Ingredients (HPDs)
- IEQ: Daylight
- IEQ: Low-Emitting Materials
- IEQ: Prereq. Min. Acoustic Performance (Schools)
- IEQ: Acoustic Performance
- MR: PBT Source Reduction (Healthcare)
- IEQ: Interior Lighting
- EA: Prereq. Min. Energy Performance
- EA: Optimize Energy Performance
- Recycled Content
Pre: **70%** | Post: **0%**

TOOLS

Visit CertainTeed.com/Ceilings
Download HPDs and EPDs
LEED® Information / BIM Objects
3-Part Specs / Data Pages



Carbon Footprint Reduction
Rapidly Renewable Resource Content
Recycled Content



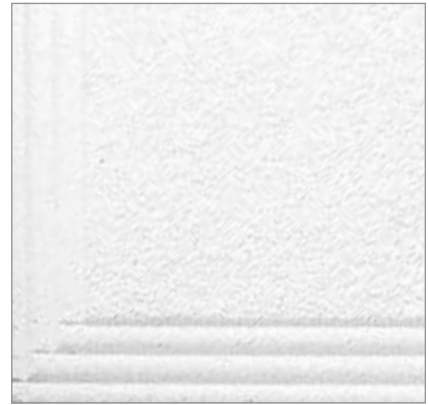
EPD Available



HPD Available



Tier Reveal Edge



Fluted Edge



Ogee Edge

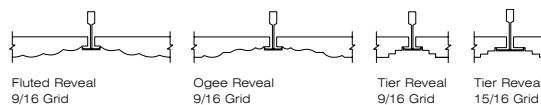
FEATURES & BENEFITS

- Upscale appearance
- Fine texture with highly decorative edge detail options
- Third-party verified Environmental Product Declaration (EPD) available for this product
- Health Product Declaration (HPD) available for this product

APPLICATIONS

- Offices
- Hospitality Areas
- Healthcare Areas
- Conference Centers
- Retail / Department Stores
- Other Commercial Buildings / Space Applications

AVAILABLE EDGE DETAILS



Fluted Reveal
9/16 Grid

Ogee Reveal
9/16 Grid

Tier Reveal
9/16 Grid

Tier Reveal
15/16 Grid

SCORING OPTIONS



24 x 24
(CMTS 412, CMTS 412-1516)



Cashmere® Style Edge Fluted Reveal (CMF-124)



Cashmere Style Edge Tier Reveal (CMTS-124)

ATTRIBUTES

	DIMENSIONS (INCHES)	EDGE DETAIL	UL CLASSIFIED NRC	CAC	EPD AVAILABLE	HPD AVAILABLE	SAG RESISTANT	MOLD RESISTANT	LR	WASHABLE	FIRE CLASS (ASTM E1264)	EMISSION COMPLIANT	RECYCLED CONTENT
TIER EDGE													
CMTS-124	24 x 24 x 3/4	Tier Reveal 9/16 Grid	0.60	35	Yes	Yes	Yes	BioShield	0.83	—	Class A	Certified	70%
CMTS-124-1516	24 x 24 x 3/4	Tier Reveal 15/16 Grid	0.60	35	Yes	Yes	Yes	BioShield	0.83	—	Class A	Certified	70%
CMTS-412	24 x 24 x 3/4	Tier Reveal 9/16 Grid	0.60	35	Yes	Yes	Yes	BioShield	0.83	—	Class A	Certified	70%
CMTS-412-1516	24 x 24 x 3/4	Tier Reveal 15/16 Grid	0.60	35	Yes	Yes	Yes	BioShield	0.83	—	Class A	Certified	70%
FLUTED EDGE													
CMF-124	24 x 24 x 3/4	Fluted Reveal	0.60	31	Yes	Yes	Yes	BioShield	0.83	—	Class A	Certified	70%
OGEE EDGE													
CMO-124	24 x 24 x 3/4	Ogee Reveal	0.60	31	Yes	Yes	Yes	BioShield	0.83	—	Class A	Certified	70%

CAN'T FIND A SIZE? Contact your local Sales Representative or call 800-233-8990

PHYSICAL DATA

MATERIAL
Mineral Fiber

ASTM E1264 CLASSIFICATION
Type III, Form 2, Pattern E

FIRE CLASS (ASTM E1264)
Tested according to ASTM E84 & CAN S102
Flame Spread: 25 or less
Smoke Developed: 50 or less

VOC EMISSIONS
Independently certified compliant with California
Department of Public Health CDPH/EHLB/Standard
Method Version 1.1, 2010.

MOLD/MILDEW RESISTANCE
BioShield® treatment included for added mold and
mildew resistance.

MAINTENANCE
Wipe with a soft cloth or vacuum with brush attachment.

WARRANTY
10-year 104/90 Limited Warranty

INSTALLATION CONSIDERATION
Colored ceilings are dye-lotted and should not be mixed.