

CertaPRO™ Thermal Extended Flange Batts

PRODUCT DESCRIPTION

Basic Use: Designed to enhance thermal and acoustical performance for use in exposed wood framing, below panel deck roof systems and other special constructions where a 25 Flame Spread rating (Class A, Class 1) for exposed applications is required. The extended flange permits use in applications where a wider flange is required.



Benefits: Certapro Extended Flange Batts deliver thermal performance that saves energy and helps control building operating costs. The excellent acoustical properties improve sound control performance in commercial panel decks. The product resists mold and mildew and will not rot or deteriorate. Certapro Thermal Extended Flange Batts are lightweight and will not settle or sag.

The FSK and white PSK faced products reduce lighting requirements when exposed, due to their light-reflective surfaces. The low permeance facings are also effective in resisting water vapor transmission.

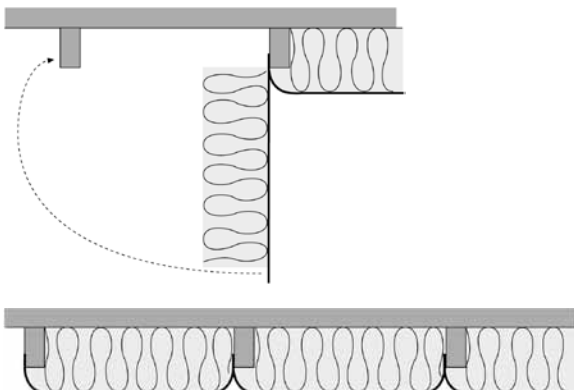
Composition and Materials: The product is composed of tan, uniformly textured, inorganic fibrous glass and formed with a formaldehyde-free binding agent.

Limitations: The National Electrical Code prohibits installation of insulation over or within 3" (76 mm) of recessed light fixtures, unless approved insulated ceiling (IC) lighting fixtures are used. Insulation should be kept clean and dry at all times.

Sizes: Available standard sizes are listed in table on other side. Contact CertainTeed for other sizes and minimum order quantities.

INSTALLATION

Position the batt and staple through the back surface of the extended flange to the side of the joist. Swing the batt into the cavity, fold the opposite flange over the other side of the next joist, and staple the flange to it, spacing staples approximately every 8" (200 mm) with beginning and ending staples about 1" (25 mm) from the end of the flange. This installation allows full thickness recovery of R-19 insulation with 2 x 4 construction. For R-30 insulation in 2 x 6 construction the insulation is compressed to approximately 8-1/2" (216 mm), which results in an installed R-Value of 28 (4.93 RSI). In each case, the insulation should hang approximately 3" (75 mm) below the bottom of the joists. These installation recommendations are general in nature. Other methods are acceptable. Please consult your contractor for recommendations best suited to the application.



Product Name	CertaPro™ Thermal Extended Flange Batts
Manufacturer	CertainTeed Corporation
Address	P.O. Box 860 Valley Forge, PA 19482-0105
Phone	610-341-7000 • 800-233-8990
Fax	610-341-7571
Website	www.certainteed.com/insulation

TECHNICAL DATA

Applicable Standards

- Model Building Codes:
 - ICC
 - California Quality Standards Reg. No. CA-T024 (PA)
 - City of Los Angeles, RR 8148
- Material Standards
 - ASTM C553 Type I
 - ASTM C665 Type II, Class A, Category 1 (PSK)
 - Type III, Class A, Category 1 (FSK)
- GREENGUARD® Children & Schools Certified

Fire Resistance

- Surface Burning Characteristics:
 - ASTM E84, UL 723
 - Max. Flame Spread Index: 25
 - Max. Smoke Developed Index: 50
- Noncombustibility:
 - ASTM E136 / Pass

Physical/Chemical Properties

- Thermal Performance:
 - ASTM C177 or ASTM C 518
 - See table on other side
- Maximum Use Temperature:
 - Temperature: ASTM C411; Max. 250°F (121°C)
- Water Vapor Permeance:
 - ASTM E96
 - ≤ 0.02 perms 1.1 ng/Pa•s•m²
 - Class I vapor retarder
- Water Vapor Sorption:
 - ASTM C1104 / $\leq 3\%$ by weight
- Corrosiveness:
 - ASTM C665 / Pass
- Fungi Resistance:
 - ASTM C1338 / Pass
- Odor Emission:
 - ASTM C1304 / Pass

Quality Assurance

CertainTeed's commitment to quality and environmental management has ensured the registration of the Athens, Chowchilla and Kansas City plants to ISO 9001:2000 and ISO 14001:004 standards.

AVAILABILITY AND COST

For availability and cost, contact your local contractor or distributor, or call CertainTeed Sales Support Group at 800-233-8990.

WARRANTY

Refer to CertainTeed's Limited Warranty for Commercial Insulation on manufacturing defects (30-25-034). Inasmuch as CertainTeed has no control over the installation design, installation workmanship, accessory materials or conditions of application, CertainTeed does not warrant the performance or results of any installation containing its products.

MAINTENANCE

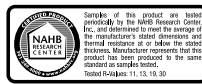
No maintenance required.

TECHNICAL SERVICES

Technical assistance can be obtained either from the local CertainTeed sales representative, or by calling CertainTeed Sales Support Group in Valley Forge, PA at 800-233-8990.

AVAILABLE SIZES							
R-Value		Thickness		Width		Length	
R	RSI	in.	mm	in.	mm	in.	mm
19	3.35	6 ¼	159	23	584	93	2362
19	3.35	6 ¼	159	23	584	96	2438
30*	5.28	10	254	24	610	48	1219

* FSK only



ASK ABOUT ALL OF OUR OTHER CERTAINTEED® PRODUCTS AND SYSTEMS:

ROOFING • SIDING • TRIM • DECKING • RAILING • FENCE
GYPSUM • CEILINGS • INSULATION

www.certainteed.com <http://blog.certainteed.com>

CertainTeed Corporation
P.O. Box 860
Valley Forge, PA 19482

Professional: 800-233-8990
Consumer: 800-782-8777