

FiberCement Trim



1- Storage & Handling

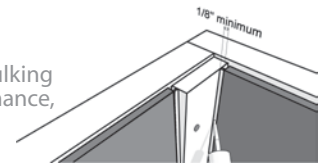
- CertainTeed Trim must be stored in an area protected from water
- Keep material flat and off ground on stringers or platforms
- If Covered area is not available on the job site, place skids on wood blocking to allow air flow underneath and shelter with a waterproof covering
- When banding, use corner protectors
- Store the material dry prior to and during installation. If wet, allow to dry prior to installation
- Lift and carry trim on edges.

2- Cutting

- Use a saw blade with carbide- tipped teeth
- To reduce the generation of dust, use cutting tools equipped with a dust collector, and never use water while cutting
- Always wear safety goggles and dust protection equipment when operating cutting tools
- CertainTeed Trim is factory coated on six sides with a high quality primer and water sealer mixture to provide an excellent base for painting
- To ensure maximum product performance, apply a 100% acrylic latex primer and paint to all field cut areas.

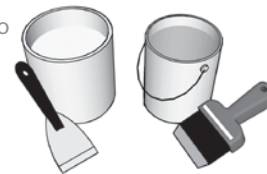
3- Caulking

- Leave minimum gap of 1/8" at trim for caulk. Use caulks that comply with either ASTM C 834 or ASTM C 920
- Caulking should be applied in accordance with caulking manufacturer's written instructions
- Use a high performance, paintable low-modulus elastomeric sealant.



4- Painting

- CertainTeed Trim product must be painted
- Always use paint and coatings that are permeable to water vapor, 100% acrylic latex paint is highly recommended
- Follow the paint manufacturer's application recommendations.



5- Finishing

- Repair any dents, cracks, and over- driven nails by filling with cementitious patching.

6- Nail Type

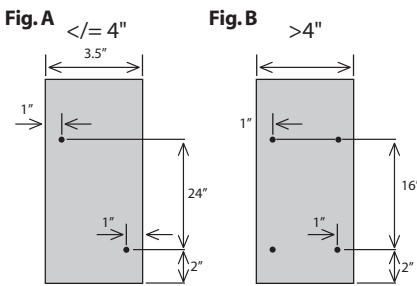
- To install CertainTeed Trim, use a corrosion resistant or stainless steel nail with a minimum 0.113" gauge shank and minimum 9/32" head
- Nails must penetrate at least 1" into solid wood
- CertainTeed is not responsible for the corrosion resistance of fasteners.

7- Screw Type

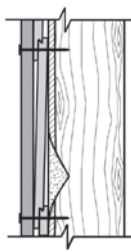
- To install CertainTeed Trim to steel stud construction use a corrosion resistant or stainless steel screw or pin.

8- Fastening

- Position fasteners no closer than 1" from the side edges of the trim and no closer than 2" from the end.
- For trim less than 4" wide(nominal), fastening should be applied in an alternate position to both sides of the piece (See Fig. A).
- For trim more than 4" wide (nominal), apply two fasteners, one on each side of the piece, spaced no more than 16" (See fig. B).



- The fastener should be driven perpendicular to the board surface and must be long enough to penetrate the framing at least 1"
- Always begin nailing at one end and proceed to the other to avoid stress on the board. Never nail from both ends to the middle
- Fasteners should be driven flush.



Do not use staples

Do not nail from the face board into the edge of another



When installing

- When installing over lap siding, fasten trim by nailing through the trim and underlying siding, making sure to nail on the overlap or high points into framing.

9- Roof Clearance



- Allow a minimum 3/4" clearance between the roofing and bottom edges of trim
- Flashing and counter flashing should be installed at the intersection of the roof and vertical surfaces as recommended by the roofing manufacturer.

10- Grade Clearance



- CertainTeed Trim should not be installed in contact with standing water, concrete slab or other deck materials
- For the appropriate grade clearance consult your local Building Code requirements.

IMPORTANT: Read and understand these instructions before installing trim. Failure to do so may void the warranty.

These installation instructions are based on manufacturer's experience with normal applications. They are not intended to cover every installation or building code requirement, detail or variation. If questions arise concerning this product or its suitability for a particular use, contact CertainTeed. Any unapproved deviation from these procedures shall be solely at the risk of the installer.