

Symphony[®] m

PERFORMANCE SERIES

Mineral Fiber Ceilings

Features & Benefits:

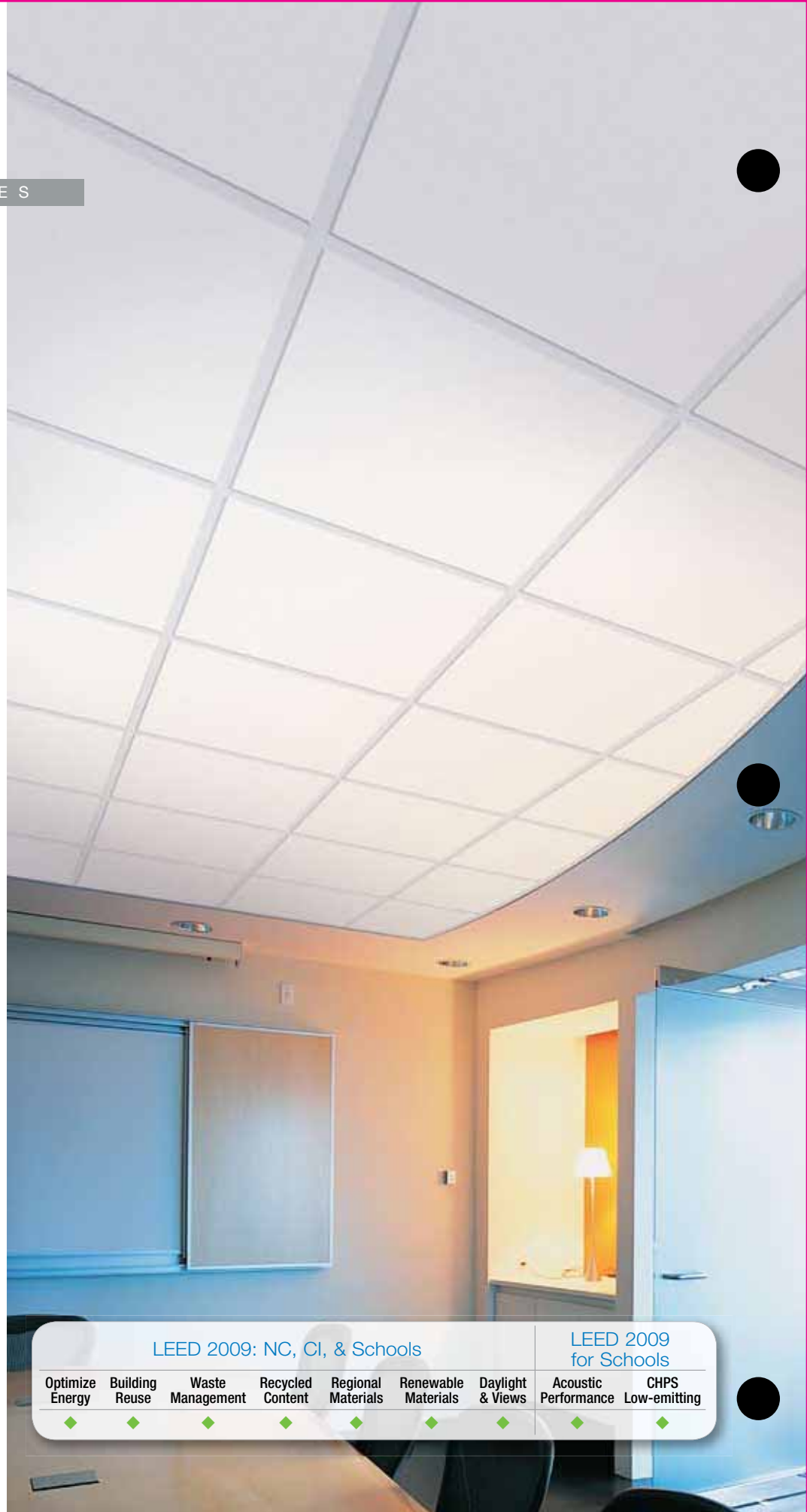
- Mineral core with reinforced mat face.
- Smooth textured Overtone[®] facing achieves monolithic architectural design appearance.
- Reduces excess noise to help create a more productive work environment.
- Exceptional durability/scrubbability.
- High light reflectance enhances conventional lighting, increasing employee performance by minimizing fatigue.
- Design with or use with other products with Overtone[®] finish for Fine Tuning possibilities (page 157).

Applications:

- Open Plan Areas
- Offices
- Restaurants
- Healthcare
- Libraries
- Galleries
- Resorts

Relative Installed Cost:

\$\$\$\$



LEED 2009: NC, CI, & Schools

LEED 2009 for Schools

Optimize Energy	Building Reuse	Waste Management	Recycled Content	Regional Materials	Renewable Materials	Daylight & Views	Acoustic Performance	CHPS Low-emitting
◆	◆	◆	◆	◆	◆	◆	◆	◆



Attributes:

ITEM NUMBER	NOMINAL SIZE (Inches)	EDGE DETAIL	NRC	CAC	LR	RECYCLED CONTENT %
SAFETONE[®] CLASS A						
1222-OVT-1	24 x 24 x 3/4	Trim, Reveal, Narrow Reveal	0.70	33	0.89	72
1220-OVT-1	24 x 48 x 3/4	Trim, Reveal, Narrow Reveal	0.70	35	0.89	72

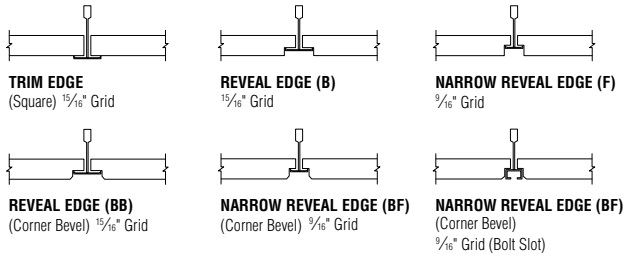
ASTM E 1264 Classification: Type IV, Form 2, Pattern E

Ordering Procedure: To order preferences for edge details, select the item number above, then add the appropriate Edge Detail code below.

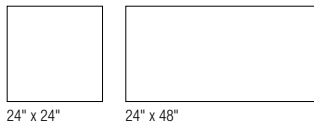
Example:

Item Number	Edge Detail Code (Other than Trim)
Select from chart	B represents Reveal (15/16") F represents Narrow Reveal (9/16") BB represents Reveal Corner Bevel (15/16") BF represents Narrow Reveal Corner Bevel (9/16")
Example: 1220-OVT-1	1220 BB -OVT-1 1220 BF -OVT-1

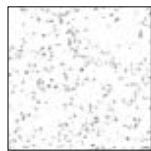
Edge Details:



Standard Sizes:



Finish:



WHITE OVERTONE[®] – OVT-1

Product Features at a Glance:

- HIGH DURABILITY
- HIGH LIGHT REFLECTANCE
- NOISE REDUCTION
- RESISTS SAGGING
- BIOSHIELD™ BIOSHIELD TREATMENT **INCLUDED** FOR ADDED MOLD AND MILDEW RESISTANCE.
- WASHABLE/ SCRUBBABLE

