

CertainTeed
Platon[®]
 Foundation Protector

**Don't build
 without it!**

**Keeps water out,
 provides drainage**

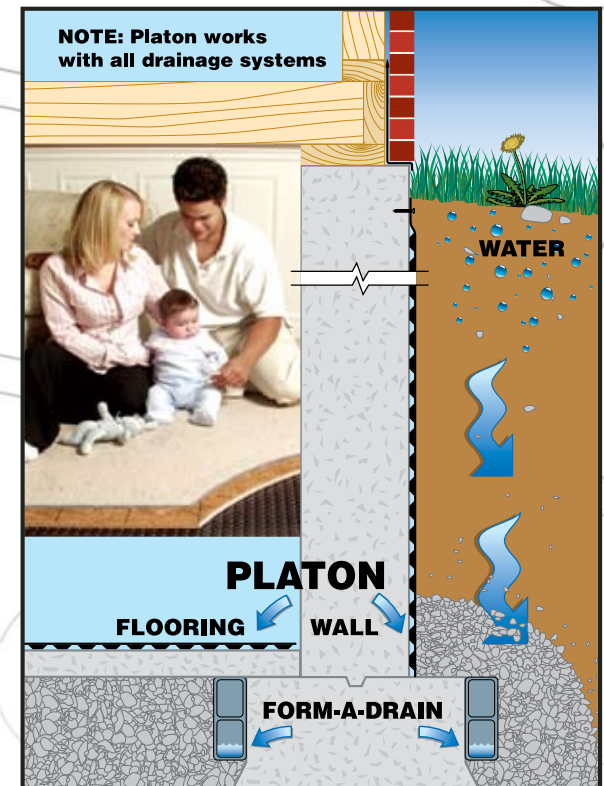
**For a dry, healthy basement. Double
 leakage protection for:**

- Block walls
- Poured concrete walls
- Insulated concrete forms
- Existing foundations

Easy to install!



- Made of tough, durable, environmentally responsible high-density polyethylene
- Unique double-dimpled construction keeps wet soil 1/4" away from the foundation and provides a waterproof barrier that controls both interior and exterior moisture
- If water breaches the membrane, it flows through the air gap to the footing drain
- Platon easily bridges 1/4" foundation cracks and keeps working even if the wall shifts, cracks or settles
- All-weather installation
- Additional waterproofing treatments are not required, but if these are used, Platon acts as an excellent protection board



buildingresponsibly[™]

CertainTeed respects the environment through the responsible development of sustainable building products and systems.

Exclusive USA supplier!

CertainTeed
 SAINT-GOBAIN

CertainTeed
 SAINT-GOBAIN

Platon – It's a wrap!

Platon is a registered mark of Isola A/S.

ASK ABOUT ALL OF OUR OTHER CERTAINTEED® PRODUCTS AND SYSTEMS:
 ROOFING • SIDING • TRIM • DECKING • RAILING • FENCE • FOUNDATIONS
 GYPSUM • CEILINGS • INSULATION • PIPE

CertainTeed Corporation
 P.O. Box 860
 Valley Forge, PA 19482

Professional: 800-233-8990
 Consumer: 800-782-8777
www.certainteed.com
<http://blog.certainteed.com>

Code No. 40-98-01D, © 04/11 CertainTeed Corporation, Printed in the U.S.A.

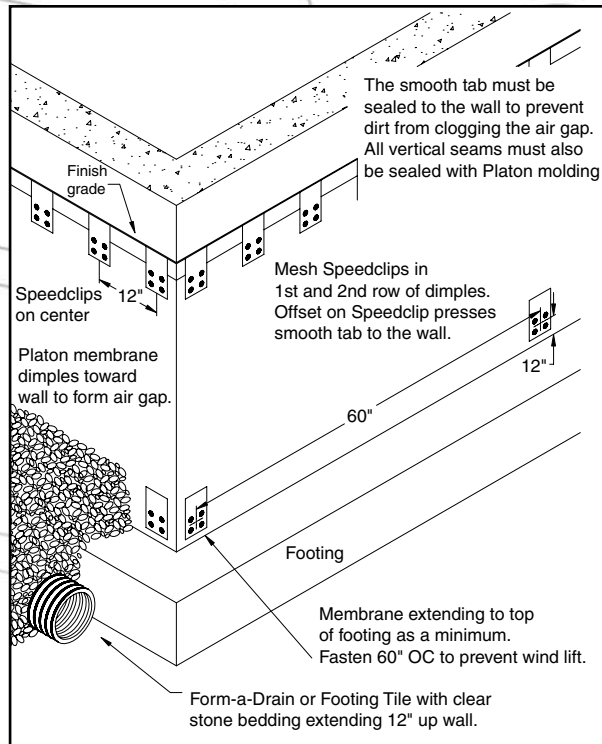

 SAINT-GOBAIN

What to do:

It's really very simple!

Detailed instructions are included with each roll – visit www.certainteed.com for step-by-step photo instructions

- Chalk a line at the finished grade all around the foundation and run a generous bead of caulking 1" below the line (caulking is not necessary with Speedstrips).
- Working from left to right, unroll the membrane along the foundation, dimples toward the wall, smooth tab at the top following the chalk line.
- Fasten with Speedclips 12" OC (see diagram) OR use Speedstrips, meshing the top 2 rows of dimples – leave a 1/4" gap between each Speedstrip.
- On vertical seams, overlap by at least 20". Water entering the seam will flow to the footing drain before it gets to the wall.
- Seal any open cut areas with Platon Molding to ensure dirt can not get behind the membrane and clog the air gap - e.g. terminations and where the smooth tab has been cut away.
- **This system must be used in conjunction with a foundation footing drain.** Form-a-Drain (ICC Report No. 95-37.01) (CCMC Report No. 13492-R) is recommended as the smart 3-in-1 solution that forms footings, drains foundations and supports radon venting.



platon[®]
KEEP IT DRY.

Platon meets these approvals:

USA NES Evaluation
ESR # 2767 (Waterproofing Membrane)
ICC 2000 International Building Code
Canada CCMC 12266-R
CCMC 12878-R

What you need:

Platon Membrane

- One roll for every 62 lineal feet of foundation (allows for joint overlap).
- Membrane can be overlapped horizontally by 6" for deep foundations.

Platon Speedclips – 65 per roll of membrane OR

Platon Speedstrips – 16 per roll of membrane

Platon Molding

- (6'6" lengths) Typically 5 pieces per job

Caulking

For concrete foundations, use asphalt-based roof cement. For ICF's use foam panel adhesive.

Fasteners

- For concrete, use 1 1/4" concrete nails
- For ICF's, use 1 5/8" corrosion resistant deck screws
- Speedclips – 1 fastener per clip
- Speedstrips – 7 fasteners per strip
- Molding – 10 fasteners per piece

Fastening Tool

Green concrete can be hand nailed as soon as the forms are stripped. Use a nail gun for block and cured concrete. For ICF's, use a cordless drill or screwdriver.