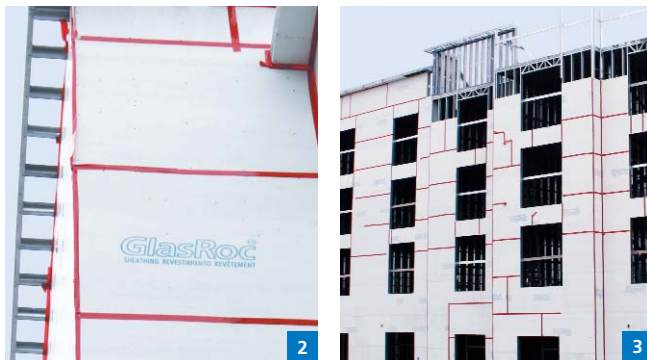
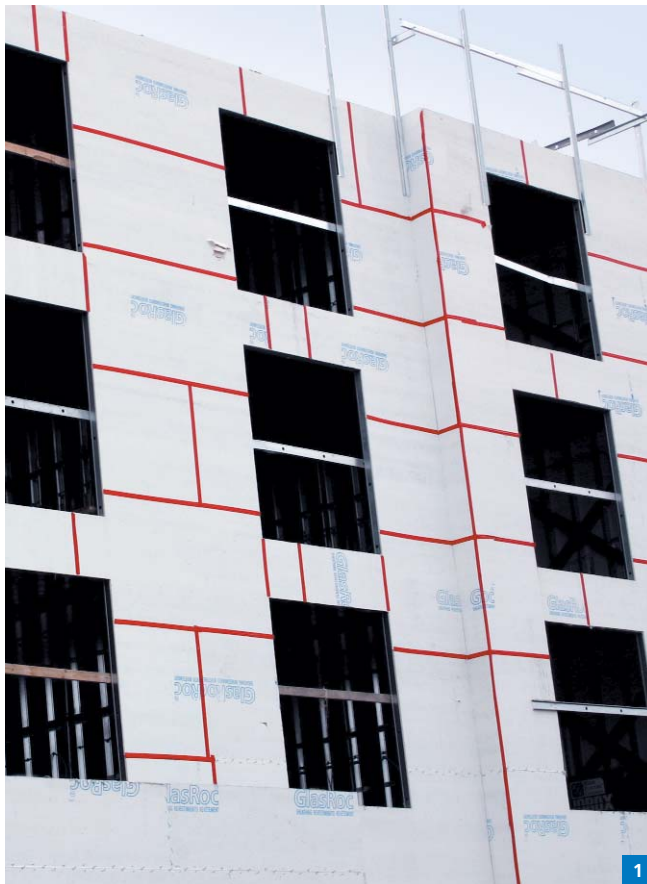


CertainTeed  
**GlasRoc**<sup>®</sup> BRAND  
High Performance Exterior Sheathing

CASE STUDY: FAIRFIELD INN & SUITES



GlasRoc<sup>®</sup> Sheathing is covered by U. S. Patent No. 6,524,679, and other patents and patents pending.

**Project:** Hotel  
**Location:** Murfreesboro, TN  
**Application:** Direct to steel framing STO EIFS applied over expanded polystyrene  
**Contractor:** Titan Hotel Constructors, Hermitage, TN  
**Architects:** MWT Architecture, Buffalo, NY  
**Distributor:** Kenco Distributors, Nashville, TN

Marriott International Inc. selected GlasRoc<sup>®</sup> high performance sheathing from CertainTeed (formerly BPB) for its \$1.9 million Fairfield Inn & Suites project in Murfreesboro, TN. As with any new hotel, this 69-room project, located just off Interstate 24, involved numerous window cutouts. This kind of project is a snap, literally, for GlasRoc<sup>®</sup> Sheathing.

**1** The contractor, Titan Hotel Constructors of Hermitage, TN, reported that installing the GlasRoc<sup>®</sup> Sheathing on the 42,030 sq. ft. hotel was easily achieved considering the amount of cutouts that were necessary. "Time and again we get great reviews from contractors who have used GlasRoc<sup>®</sup> in their EIFS wall system," said Keith Kolodey, CertainTeed Sales Representative for the project.

Contractors consistently report that GlasRoc<sup>®</sup> Sheathing is easy to handle because of the fully embedded glass mats, developed as part of a patented Enhanced Glass Reinforced Gypsum Technology. Titan also reported that cutting the numerous windows and board sizes required no special tools, and the boards scored easily and snapped free. Additionally the acrylic exterior face provided the GlasRoc<sup>®</sup> Sheathing with excellent adhesion properties for the layered EIFS walls.

**2** Owner's representative Mitch Patel, who is president and CEO of Platinum Hospitality Management Co. Inc., and manager of the Murfreesboro Fairfield Inn, called for a product with superior moisture resistance. With GlasRoc<sup>®</sup> Sheathing, the EIFS walls will provide additional protection against the hot and humid Tennessee summers.

**3** When wet or freezing weather conditions delay the application of an EIFS layer, GlasRoc<sup>®</sup> Sheathing stands tough with its built-in six-month resistance to UV and environmental exposure. Each GlasRoc<sup>®</sup> Sheathing board contains 20 years of proven technology for the most advanced water absorption resistance and surface water resistance available.

™© CertainTeed and the tag line "Quality made certain. Satisfaction guaranteed." are trademarks of CertainTeed Corporation. All other trademarks are the property of BPB plc or its affiliates and related companies.

©01/07 CertainTeed Corporation, Printed in U.S.A. Form CTG-6001/2M/1-2007



CertainTeed Corporation  
P.O. Box 860  
Valley Forge, PA 19482

Professional: 800-233-8990  
Consumer: 800-782-8777  
[www.certainteed.com](http://www.certainteed.com)

**CertainTeed**   
Quality made certain. Satisfaction guaranteed.™