

CertainTeed

Easi-Fil™
brand

Drywall Finishing Compound

Finishing Guide

The finishing process requires patience! You should apply three coats of Easi-Fil™ joint compound through the process and allow 24-hours of drying time between applications. The first coat is used to embed the tape, while the two finishing coats feather out the compound, resulting in a uniform, smooth finished surface.

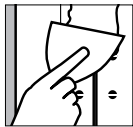
A few pointers for easy and safe application:

- ❑ Always wear a dust mask when sanding
- ❑ Use only a 150 - 180 grit sandpaper, designed especially for joint compound
- ❑ Keep your knife clean by drawing it over the edge of the mudpan or hawk.
- ❑ Throw out any dried bits of joint compound... they will leave scratches

- ❑ Don't worry about a smooth finish on the first coat... the finishing coats will take care of that.
- ❑ Stir joint compound well before use. Add clear water for desired consistency.
- ❑ Joint compound should never be frozen. In cold weather compound should be at room temperature 24 hours before using.

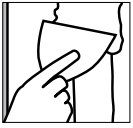
Joint treatment and taping

TAPING AND FINISHING

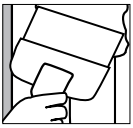


Begin with the butt joints – the areas where the unfinished ends of ProRoc® boards meet.

First, apply a coat of Easi-Fil™ joint compound over the joint with your four-inch knife. Then, press the tape firmly into the compound by pressing your knife over the tape. Squeeze out excess compound, making sure that there is enough Easi-Fil™ joint compound under tape to make a good bond.



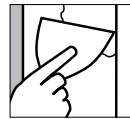
Allow each coat to dry thoroughly before applying the next coat (24-hours between coats). If the tape does lift along the edges after drying; simply cut out the affected area in the shape of a canoe before applying the next coat. If the tape lifts in the centre, you must tear out affected area and re-tape.



Apply a second coat using a 7" taping knife and this coat should extend approximately 4" - 6" beyond each side of the joint. After the coat dries approximately 24 hours, sand the area.

Apply a third coat using a 12" taping knife and this coat should be a thin coat and should extend approximately 7-12" beyond each side of the joint. The further you feather the compound out, the harder it will be to see imperfections.

When you are finished, you may want to test the finishing by holding your 12-inch finishing knife blade across the joint. If the blade rocks, you'll know there is still a hump, which will need further feathering.



SANDING

Do not sand after applying tape, remove small lumps behind with your knife before applying 2nd coat. When sanding use 150-180 grit paper and always sand

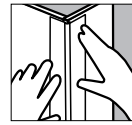
along the outside edge well, so that the transition between the compound and the ProRoc boards are smooth with no imperfections. Then sand the rest of the joint lightly in order to make smooth. Be careful not to sand too much off. If too much is sanded off, you will need to apply additional coats of compound.

INSIDE CORNERS

Inside corners will need to be taped as well. First, apply a thin layer of joint compound on both sides of the corners using a 2-1/2" taping knife, extending the compound slightly beyond where the tape would extend.

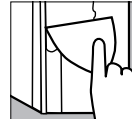
Next, fold the tape and lightly press it into the corner with your knife. Once it is in place, using your 2-1/2" knife or a corner tool to firmly embed the tape into the compound. Allow to dry for 24-hours, then apply a second coat using a 7" taping knife to one side of the corner. You can only do

OUTSIDE CORNERS



one side of the corner today, as the compound must dry completely so the other side can be finished tomorrow.

Do the same for the third coat, using a 12" taping knife.



Measure bead and cut to right length; a snug fit from floor to ceiling (about 1/4" shorter than the wall height). With a 7" knife apply a generous amount of Easi-Fil™ joint compound on either side of

corner. Using even pressure, press paper / metal bead onto corner into position, ensuring it is aligned; embed it into compound by running the knife at 45° angle. Let dry for 24-hours. Apply a second coat with the 7" knife, allowing knife to rest on nose of the bead. Let dry for 24-hours and apply a third coat. After another 24-hours, sand the corner to a smooth finish.

FINISHING FASTENERS

You will want to coat each of the nail or screw heads used to fasten your ProRoc® boards with Easi-Fil™ joint compound.

After the first coat has dried completely, you will need to sand and apply two more coats to the fasteners, sanding between each coat.

Repairs

SMALL BREAKS

To repair small cracks and holes, first remove any loose material. Then, using a clean putty knife, fill the opening with joint compound. Let it dry and apply additional coats, if needed. To repair larger cracks, embed a piece of joint tape to cover the opening, then apply a second coat of joint compound and finish the surface.

LARGER BREAKS

Where the tape will not bridge the opening, use a keyhole or other saw to cut out an area around the hole. Cut the

board back to the center of the stud on either side of the damaged area. For a large crack, remove the section and any fasteners with a hammer or screw gun. Measure and cut a new gypsum board panel to fit the damaged area. Fasten it to the studs. Apply joint compound and embed the tape to all four sides of the replacement piece. Or, for larger holes, use self-sticking fiberglass tape along the edges and apply joint compound. Let it dry, then apply a second coat, feathering to produce a smooth surface. If necessary, apply a third coat.

POPPED NAILS

Press the board firmly against the framing member. Drive and dimple a new nail about 1-1/2" from the popped nail. Then drive the first nail below the surface of the board. Cover the dimples with joint compound.

TORN FACE PAPER

Peel away any loose paper. Apply a very thin layer of joint compound, using a finishing knife large enough to cover the damaged area. Feather it to get a smooth finish. Let it dry for 24 hours and apply a second coat, if needed.

Consumer: 800-782-8777 • www.certainteed.com

CertainTeed

CertainTeed ProRoc[®] BRAND Gypsum Wallboard Panels

Installation Guide

CERTAINTEED PROROC[®]

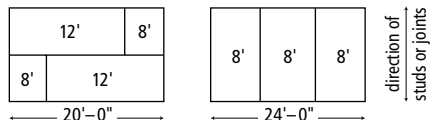
A durable, lightweight, cost-effective building material for interior walls and ceilings.

Consisting of a premium quality, non-combustible gypsum core, ProRoc gypsum board is encased in a smooth face (front) and back covering of 100% recycled paper. The tapered edges are precision manufactured and paper bound for easy joint finishing, making ProRoc gypsum board the ideal choice for finishing interior walls and ceilings. Once primed, it can be painted, wallpapered or textured for a look that works for you.

Planning the Job

It's best to plan your ProRoc installation with the least amount of joints (the seam where boards meet). Fewer joints will mean less finishing work.

We recommend installing ProRoc boards perpendicular to studs or joists. ProRoc boards come in 4-foot wide and



TOOLS YOU WILL NEED

To properly install ProRoc gypsum board, you'll need the following tools:

- Tape measure
- 4-foot T-square or straight edge
- Utility knife with extra blades
- Step ladder
- Marking pencil
- Wallboard Saw
- Tin snips
- "Mud" Hawk or Pan

- 2-1/2", 4", 7" and 12" finishing knife
- Drywall rasp
- Dust mask
- Safety glasses or goggles
- 150-180 grit sandpaper
- Sanding pad and pole sander
- Sponge
- Drywall hammer or regular carpenter's hammer (if installing with drywall nails)
- Electric screw gun or standard drill with dimpler attachment (if installing with drywall screws)

various lengths and thicknesses. However, most common are 8", 10", 12". You may find it easiest to work with 8-foot boards.

If you are intending to finish your ceilings with a water based texture, you should use ProRoc 1/2" Interior Ceiling Board on maximum 24" on centre joists, in order to avoid sagging.

To determine how many ProRoc boards you will need, simply calculate the total surface area of your walls and/or ceiling by multiplying the length by the width. You might wish to draw a sketch of the room/area you are work-

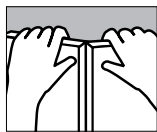
ing on to make things easier. When calculating, do not subtract windows or door areas. Divide your total square footage by the square footage of your boards (32-feet for an 8-foot board) and round up to find the number of boards you need.

Based on the square footage of your project area, you'll need the following materials per 100-square-feet:

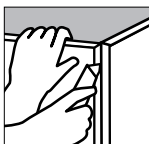
- 100 1-1/4" drywall screws (or 1/2 lb of nails)
- 30-feet of CertainTeed ProRoc Joint Tape
- 4.5L of ProRoc joint compound

Installation Instructions

CUTTING THE BOARD



ProRoc gypsum board is very easy to work with and cutting is quite simple. To make a cut, score the

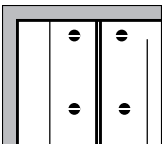


paper on the face side with a utility knife along the edge of your T-square. Apply firm, but even, pressure to snap the board along the score. Then fold the board along the score and cut the paper along the crease with the utility knife. Lastly, smooth the rough edges with a sanding

block or drywall rasp.

Remember, always wear safety glasses when cutting or sanding boards.

ATTACHING PROROC BOARDS



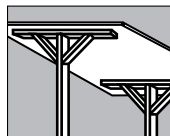
You can attach your ProRoc boards to studs or joists using nails, screws. We recommend using drywall screws for optimum installation and professional finish. You might wish to consult with your dealer when considering the different application methods.

Always install ceiling first, then install walls, allowing a space of at least 1/2" off of the floor. Keep fasteners 6-inches away from the interior ceiling and ensure that nails or screws are not less than 3/8" from the ends and edges of the boards.

CEILING

Installing ceiling boards can be tricky and requires two people. In addition, you will find it much easier if you use T-braces or a drywall lift to hold the boards in place until they are fastened.

You can build T-braces yourself! You'll need a two by four that is an inch longer than the distance from the floor to the ceiling framing members, as well as, 2-two foot lengths of one by fours.



One piece of the 1 x 4 should be used for the top of the "T", while the second piece should be used as a brace and attached diagonally from the top piece to the stem. You'll need to make sure the T stays square.

Have your helper use one T-brace, while you manage the other to lift the board into place. Your drywall screws should be installed 12" to the joists. If using nails, they should be placed 6" apart. Install nails or screws slightly indented into the surface, without breaking the paper face or damaging the gypsum core. If you do break the paper, remove the fastener and replace with one 2" away.

WALLS

When installing gypsum board, install the upper board first, ensuring that you push the board firmly against the ceiling and that tapered edges are in contact. Then fasten with drywall screws spaced 16" apart (or preferably double nails 6" apart) working from the center out to the edges.

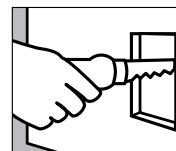
To put the lower panel into place, you may wish to use a wedge or wallboard lifter. Put the angled edge under the board and use it as a lever to jack it up against the top panel.

CUTOUTS

You will need to cut openings in your ProRoc boards to accommodate electrical outlets, light fixtures, windows and doors.

For light fixtures and electrical boxes, measure the distance from the edge of the adjacent board to the near and far sides of the installed fixture box. Then measure from the top edge

of the panel to the top and bottom of the box. Trace the outline of the box in the position you just measured on the board. Cut the opening with a drywall saw.

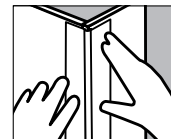


For larger openings, install the panels directly across the openings. Then use a drywall saw to cut the panels, using the framing as your guide. As you install the boards, make sure that you do not place joints at the edges of doors or windows. If you do, as the door or window is opened and closed over time, the joint will crack.

INSIDE CORNER

To join boards at an inside corner, simply butt the second board against the first and fasten its end to a framing member.

OUTSIDE CORNER



On outside corners, be sure to cover the end of the first installed board with that of the second. Fasten both ends of the boards to the common stud.

To prepare the corner for finishing, install a corner bead. Measure the length needed, then cut the bead with tin snips, cutting through each flange towards the nose, then bending the bead to break. After selecting the corner bead of your choice, follow the manufacturer's instructions for installation.