

CertainTeed Solar

CT SERIES 144 HALF-CELL SOLAR MODULES

(430-440W)



Half-Cell Monocrystalline Type

- CT430HC11-06
- CT435HC11-06
- CT440HC11-06



Features and Benefits

High Quality / High Power

- Up to 440W with black backsheet
- UL listed (UL 61730)
- Positive power output tolerance

Limited Warranty*

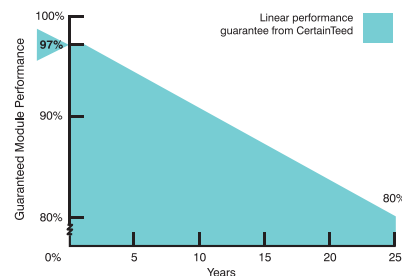
- 25-year linear power output warranty

*See CertainTeed's limited warranty for details

See reverse for product specifications



Power Output Warranty





Electrical Characteristics

		430W	435W	440W
Nominal Output (Pmpp)	W	430	435	440
Voltage at Pmax (Vmpp)	V	40.6	40.8	41.0
Current at Pmax (Impp)	A	10.60	10.67	10.74
Open Circuit Voltage (Voc)	V	49.5	49.7	49.9
Short Circuit Current (Isc)	A	11.19	11.26	11.33
Output Tolerance	W	-0 / + 5		
No. of Cells & Connections	144 half-cells in series / 3 bypass diodes			
Maximum Series Fuse Rating	20A			
Cell Type	Half-cut Monocrystalline			
Module Efficiency	%	19.76	19.98	20.21
Temperature Coefficient of Pmpp	%/C	-0.36		
Temperature Coefficient of Voc	%/C	-0.29		
Temperature Coefficient of Isc	%/C	0.05		



Mechanical Characteristics

Laminate	Glass: 3.2 high transmission, tempered, anti-reflective Encapsulant: POE Backsheet: Weatherproof film (Black or White)
Frame	Anodized aluminum (Black)
Junction Box	IP67/IP68
Output Cables	4 mm ² (12AWG) PV Wire, Length 1.2m (39.37")
Connectors	Polarized MC4 compatible
Weight	24.01 kg (53.13 lbs)

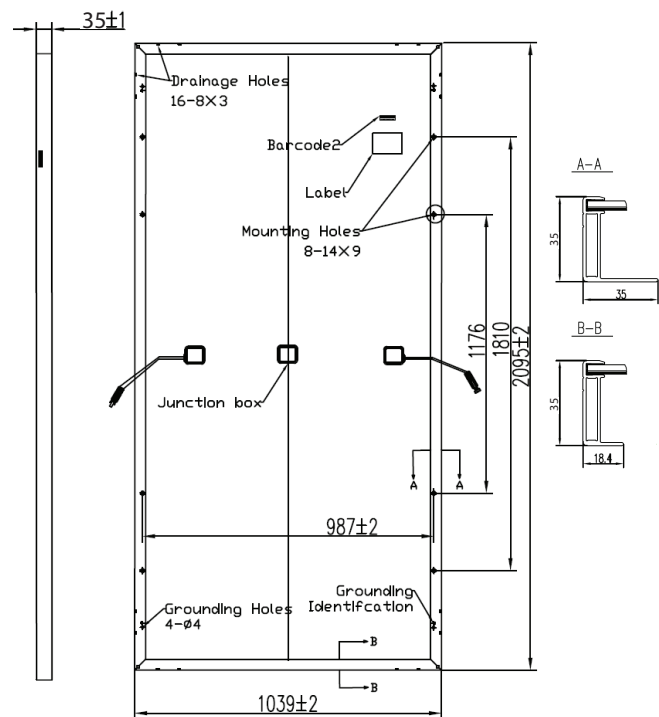


Operating Conditions

Nominal Operating Cell Temp.	44+/-2° C
Operating Temperature	-40 to 85° C
Maximum System Voltage	1,000V
Fire Performance	Class C / Type 1
Maximum Wind Load	129.5lbs/ft ² (6200 Pa)
Maximum Snow Load	112 lbs/ft ² (5400 Pa)



Dimensions



CertainTeed

CEILINGS • DECKING • FENCE • GYPSUM • INSULATION • RAILING • ROOFING • SIDING • TRIM

20 Moores Road Malvern, PA 19355 Professional: 800-233-8990 Consumer: 800-782-8777 certainteed.com