

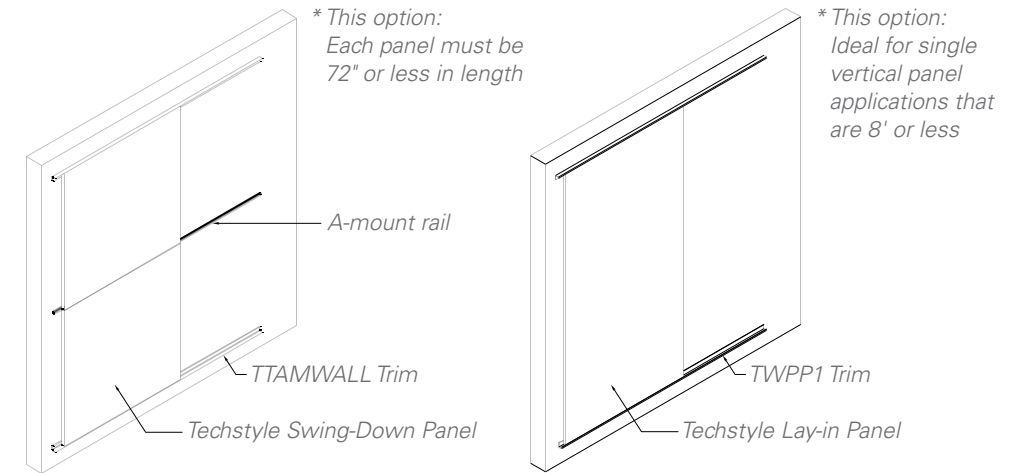
Techstyle® wall panel systems provide excellent acoustical performance. Integration with our ceiling system allows designs to continue seamlessly from the ceiling plane to maximize acoustical performance.

Project: Branksome Hall Athletics and Wellness Centre, Toronto, ON; Techstyle® Walls Photo Credit: Shai Gil Photography

KEY FEATURES

- Proprietary formaldehyde-free fiberglass composite construction
- High acoustical performance: NRC of 0.70 up to 1.0 and SAA of 0.86
- An easy-snap on attachment or flush mounted install for wall applications.
- Class A Fire Rating, per ASTM E84
- GREENGUARD Gold Certified

TYPICAL ISOMETRICS



PANEL SIZES

Width x Length

24" x 24"	24" x 42"	24" x 48"	24" x 54"	24" x 60"	24" x 66"	24" x 72"	24" x 78"	24" x 84"	24" x 90"	24" x 96"
30" x 30"	30" x 60"	30" x 72"	30" x 96"							
48" x 24"	48" x 42"	48" x 48"	48" x 54"	48" x 60"	48" x 66"	48" x 72"	48" x 96"			

Additional sizes (including metric) are available. Please consult factory.

ACOUSTICS

Techstyle® wall panels offer three levels of sound absorption. All performance levels use the same front panel, but different backer.

- NRC 0.70: The simplest version is directly mounted to the wall.
- NRC 0.85: Directly mounted to the wall with a 1.5" total build up and the gap filled with a 0.5" formaldehyde-free fiberglass 4 pcf backer.
- NRC 1.00: Directly mounted to the wall with a 2" total build up and the gap filled with 1" fiberglass backer.

Frequency in HZ	100	125	160	200	250	315	400	500	630	800	1000	1250	1600	2000	2500	3150	4000	5000
NRC 0.70	0.06	0.11	0.14	0.20	0.29	0.40	0.46	0.56	0.64	0.69	0.88	0.92	0.94	0.98	1.05	1.00	0.96	0.88
NRC 0.85	0.10	0.12	0.13	0.26	0.34	0.58	0.75	0.92	0.96	1.03	1.07	1.01	1.01	1.05	1.06	1.06	1.06	1.02
NRC 1.00	0.24	0.31	0.48	0.66	0.85	0.97	1.01	1.06	1.04	1.03	1.04	0.96	0.94	0.96	0.94	0.90	0.93	0.92

PHYSICAL DATA

Surface Finish: Acoustical Coating (white) or Sublimation printed Polyester Non Woven
Light Reflectance: 81% (White) ASTM E1477
Surface Burning: Class A (ASTM E84)
 – Flame Spread Index ≤ 25
 – Smoke Index ≤ 50
Acoustical Ratings – NRC: 0.85 (ASTM C 423)
Moisture Resistance: Resistant to 95% humidity in 104° temperature
Fungal Resistance: Resistant (ASTM C1338)
Weight: 0.30 lbs. per sq. ft.
Warranty: 10 year limited

BIM

REVIT files available for BIM contributions, see website for details.

LEED V4 CREDITS

EA: Optimize Energy Performance
MR: Building Product Disclosure
EQ: Low-Emitting Materials
EQ: Indoor Air Quality Assessment
EQ: Acoustic Performance

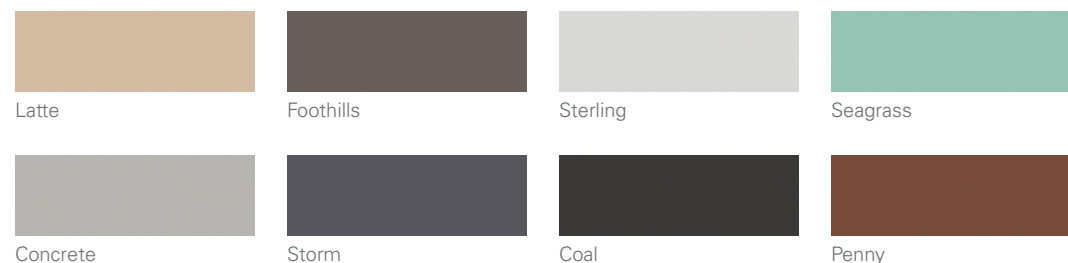
CERTIFICATIONS

GREENGUARD Gold Certified
 CHPS - Passed

COLORS & PATTERNS

Client specific colors available. Minimum quantities may apply. Colors are for illustrative purposes only.

COLORS See page 190 for all Colors.

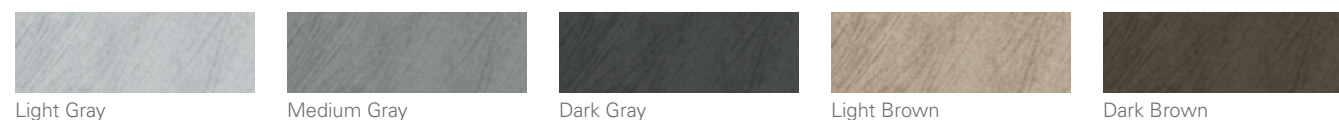


CUSTOM COLORS
Panels can be matched to solid colors from major paint manufacturers.

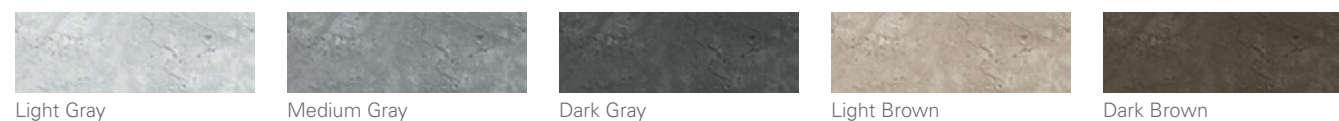


TEXTURES See page 202 for all Textures.

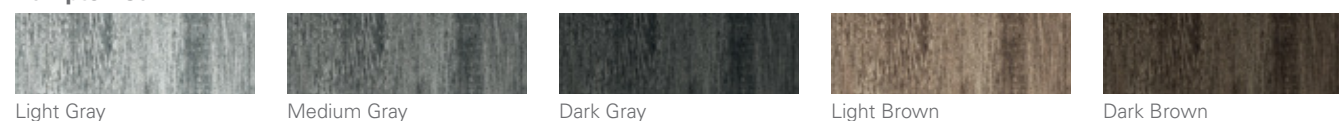
Brushed – Box Office



Concrete



Hampton Oak



WOODS See page 194 for all Woods.

Amber Oak



American Cherry



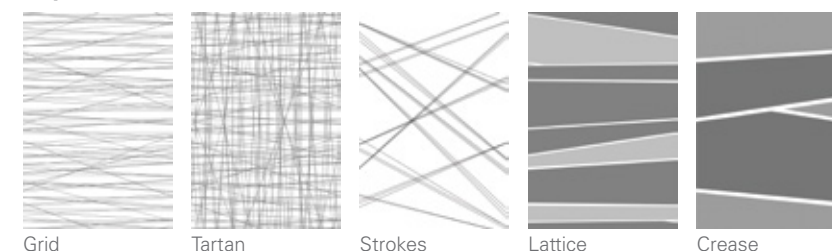
Hard Rock Maple



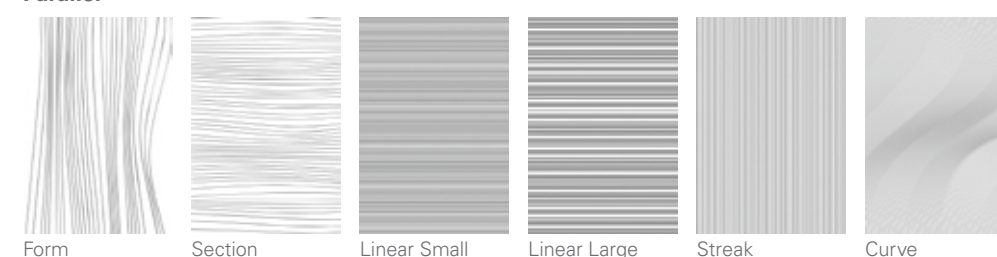
GRAPHICS See page 198 for all Graphics.

Client-specific colors available. Minimum quantities may apply. Colors are for illustrative purposes only.
NOTE: Patterns represent 48" x 72" panel.

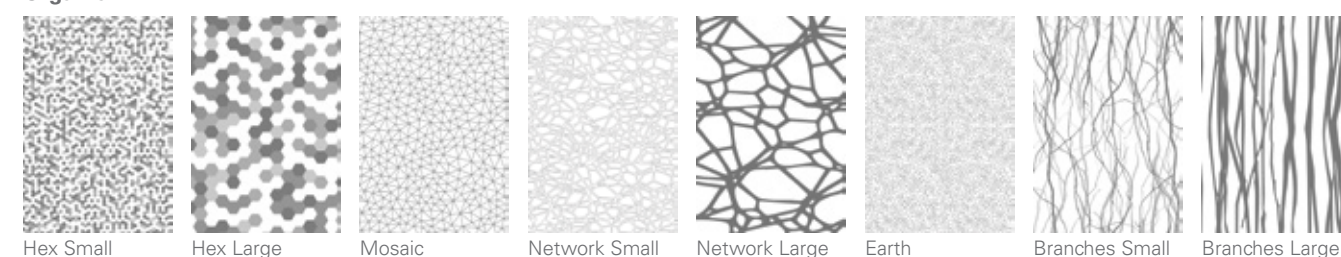
Asymmetric



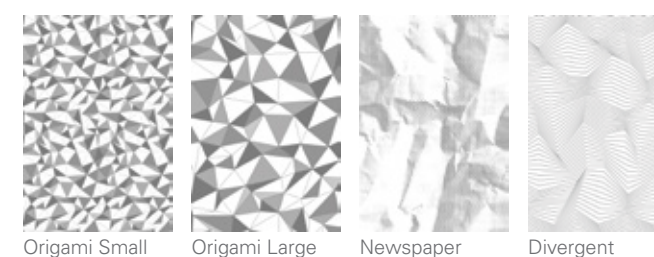
Parallel



Organic



Dimensional



* Graphics above are shown in Concrete colorway, but are available in all colorways below.
Custom colors are also available, please contact manufacturer.

