



Techstyle® Graphic panels offer a selection of organic, abstract and geometric designs created specifically for the ceiling plane.

Project: National Interstate Insurance Company Headquarters, Richfield, OH; Techstyle® Graphic – Lattice – Storm Photo credit: Studio 66 LLC

KEY FEATURES

- Proprietary formaldehyde-free fiberglass composite construction
- Monolithic appearance - large format panels, semi-concealed suspension, nominal 1/4" reveals
- Convenient swing-down access to the plenum
- Trims are engineered for fast installation of Techstyle®
- Lighting and diffuser integration
- Enhanced soiling resistance and clean-ability
- Class A Fire Rating, per ASTM E84
- GREENGUARD Gold Certified

PHYSICAL DATA

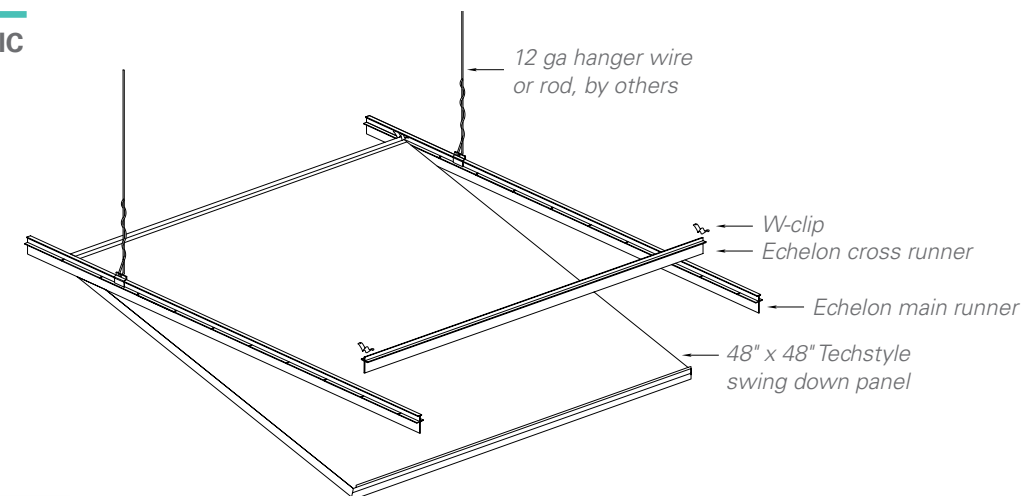
Surface Finish: Non-woven
Light Reflectance: 81% (LR1) ASTM E1477
Surface Burning: Class A (ASTM E84)
 – Flame Spread Index \leq 25
 – Smoke Index \leq 50
Acoustical Ratings – NRC: 0.85 (ASTM C 423)
Acoustical Ratings – CAC: 17 w/no backer, (ASTM E1414)
Moisture Resistance: Resistant to 95% humidity in 104° temperature
Fungal Resistance: Resistant (ASTM C1338)
Weight: 0.30 lbs. per sq. ft.
Warranty: 10 year limited
ICC: Approval (ESR-2123)

BIM

REVIT files available for BIM contributions, see website for details.

TYPICAL ISOMETRIC

Echelon™ grid system with swing down panels

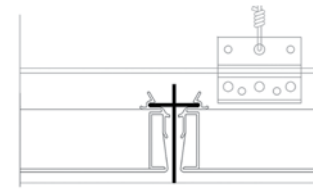


SUSPENSION SYSTEMS

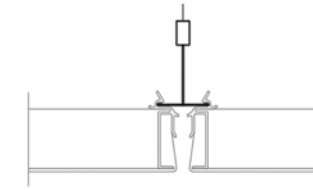
Echelon: CertainTeed grid system
 Compatible with swing down and lay-in panels

Swing Down Panels
 15/16" T-Grid

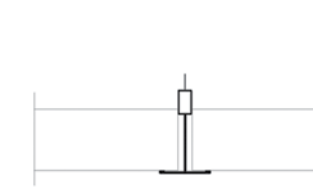
Lay-in Panels
 15/16" T-Grid or 9/16" T-Grid



ECHELON™



SWING DOWN



LAY-IN

PANEL SIZES

Additional sizes available, consult manufacturer.

SWING-DOWN

Width x Length

24" x 6"	24" x 24"	24" x 42"	24" x 48"	24" x 54"	24" x 60"
24" x 66"	24" x 72"	24" x 78"	24" x 84"	24" x 90"	24" x 96"
30" x 6"	30" x 30"	30" x 60"	30" x 72"	30" x 96"	
48" x 6"	48" x 24"	48" x 42"	48" x 48"	48" x 54"	48" x 60"
48" x 66"	48" x 72"				

LAY-IN

Width x Length

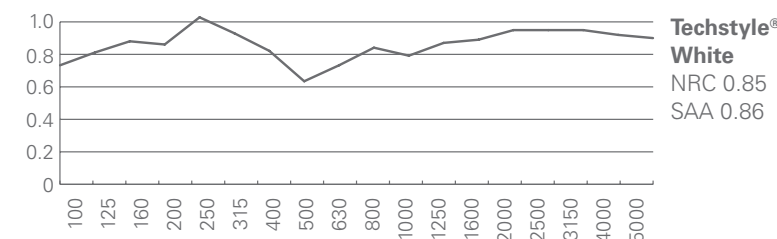
24" x 6"	24" x 24"	24" x 42"	24" x 48"	24" x 54"	24" x 60"	24" x 66"
24" x 72"	24" x 78"	24" x 84"	24" x 90"	24" x 96"	24" x 120"	
30" x 6"	30" x 30"	30" x 60"	30" x 72"	30" x 96"		
48" x 6"	48" x 24"	48" x 42"	48" x 48"	48" x 54"	48" x 60"	48" x 66"
48" x 72"	48" x 96"					

TYPICAL SECTION – TRIMS

See Resource section for available trim options.

ACOUSTICS

Techstyle®'s honeycomb design absorbs both high and low frequencies at an impressive level, providing superior acoustical performance, no matter the frequency. NRC 0.85 (ASTM C 423) SAA 0.86 (ASTM C 423).



LEED V4 CREDITS

- EA: Optimize Energy Performance
- MR: Building Product Disclosure
- EQ: Low-Emitting Materials
- EQ: Indoor Air Quality Assessment
- EQ: Daylight
- EQ: Acoustic Performance

CERTIFICATIONS

GREENGUARD Gold Certified

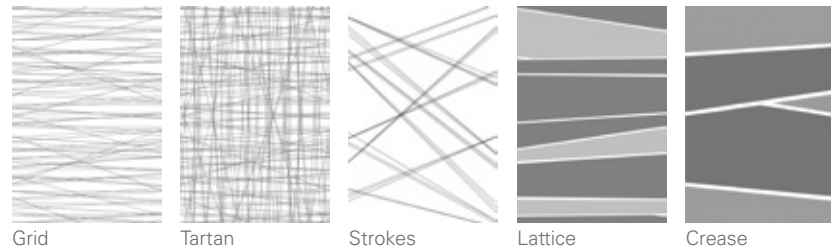
TECHSTYLE® CEILINGS

TECHSTYLE® GRAPHIC

GRAPHICS

Client-specific colors available. Minimum quantities may apply. Colors are for illustrative purposes only.
NOTE: Patterns represent 48" x 72" panel.

ASYMMETRIC



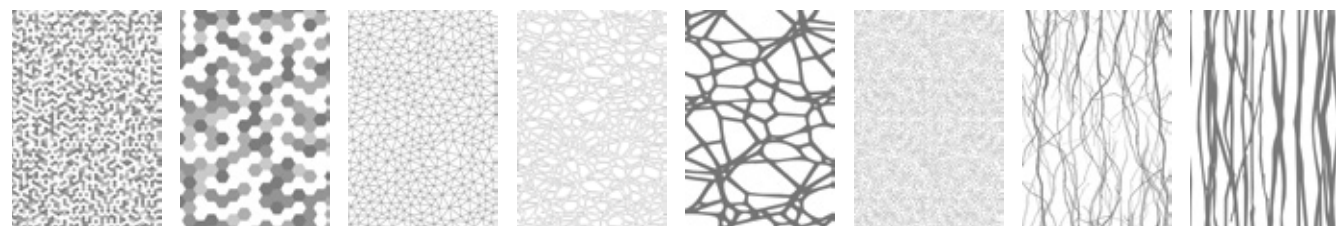
Grid Tartan Strokes Lattice Crease

PARALLEL



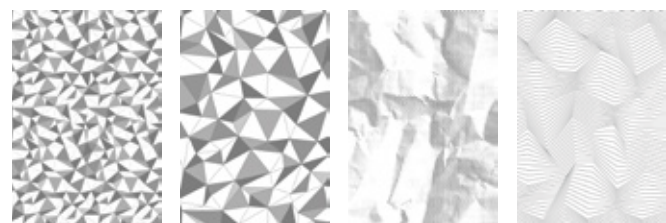
Form Section Linear Small Linear Large Streak Curve

ORGANIC



Hex Small Hex Large Mosaic Network Small Network Large Earth Branches Small Branches Large

DIMENSIONAL



Origami Small Origami Large Newspaper Divergent

* Graphics above are shown in Concrete colorway, but are available in all colorways below.
Custom colors are also available.



latte foothills sterling seagrass concrete storm coal penny



Project: National Interstate Insurance Company Headquarters, Richfield, OH; Techstyle® Graphic – Lattice – Storm Photo credit: Studio 66 LLC