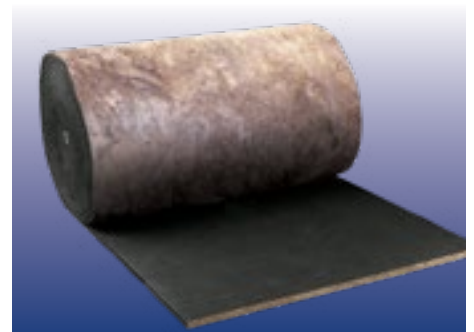


# TECHNICAL INSULATION PRODUCTS SUBMITTAL FORM



Submitted to: \_\_\_\_\_

Job name: \_\_\_\_\_

Submitted by: \_\_\_\_\_

Date: \_\_\_\_\_

This Submittal Form is provided to assist you in specifying and selecting the proper CertainTeed Insulation products. Basic product descriptions and performance data are included. For further information or technical assistance, contact your local CertainTeed representative.

CertainTeed Corporation, 20 Moores Road, Malvern, PA 19355  
Visit our website at: [www.certainteed.com/technicalinsulation](http://www.certainteed.com/technicalinsulation)  
Customer Service 800-441-6720 • Fax 800-735-2381

Product	Description	Product Details*	Applicable Standards
---------	-------------	------------------	----------------------

**SoftTouch™  
Duct Wrap**

A blanket-type insulation composed of glass fibers bonded together with a thermosetting resin. Product is available as unfaced or with FSK or PSK vapor retarder facing. On faced products, a 2" (51 mm) stapling/taping tab is provided on one edge.

Type	Nominal Thickness	R	Installed R-Value
75	1"	3.8	3.0
75	1½"	5.2	4.2
75	2"	6.9	5.7
75	2⅞"	7.3	6.0
75	3"	10.2	8.3
75	4"	13.5	11.0
100	1"	3.8	3.0
100	1½"	5.7	4.5
100	2"	7.6	6.1
150	1"	4.1	3.2
150	1½"	6.2	4.8
150	2"	8.3	6.4

Complies with:

- ASTM C1290
  - Type I - Unfaced
  - Type II - Gray PSK Faced
  - Type III - FSK Faced and White PSK Faced
- ASTM C553
  - Type I - Type 75, 100 and 150
  - Type II - Type 100 and 150
  - Type III - Type 150
- CAN/CGSB-51.11-92
- ASTM C1136 (Facings)
  - Type II - FSK Faced and White PSK Faced
  - Type IV - Gray PSK Faced
- Thermal performance determined by:
  - ASTM C177 and/or ASTM C518
- GREENGUARD Certification Standards:
  - Low-emitting products for the indoor environment.
  - Meets product emission standard under GREENGUARD Gold.

Notes:

**Wide Wrap  
Duct Wrap**

A blanket-type insulation available in 5' widths - manufactured with glass fibers bonded together with a sustainable plant-based binder system. Available as unfaced or with FSK or PSK vapor retarder facing. On faced products, a taping tab is provided on one edge.

Type	Nominal Thickness	R	Installed R-Value
75	1½"	5.2	4.2
75	2"	6.9	5.7
75	2⅞"	7.3	6.0
75	3"	10.2	8.3

Complies with:

- ASTM C1290
- ASTM C553
  - Type I
  - Type III
- CAN/CGSB-51.11-92
- ASTM C1136

Notes:

**ToughGard® R  
Duct Liner**

A fiberglass acoustical liner for HVAC sheet metal duct systems operating at velocities up to 6,000 fpm (30.5 m/s) and temperatures to 250°F (121°C). Absorbs unwanted crosstalk, equipment and air rush noise.

Type	Nominal Thickness	R
150	1"	4.2
150	1½"	6.0
150	2"	8.0
200	1½"	2.1

Complies with:

- ASTM C1071
  - Type I, roll insulation
- Thermal Performance determined by:
  - ASTM C177 or ASTM C518
- Acoustic Performance determined by:
  - ASTM C423 using Type A mounting per ASTM E795

Notes:

\*Additional R-Values and thicknesses may be available. Product availability may vary by location. Contact your CertainTeed representative for more information.

Product	Description	Product Details*	Applicable Standards
---------	-------------	------------------	----------------------

**ToughGard® T Textile Duct Liner**

A textile-type fiberglass acoustical liner for HVAC sheet metal duct systems operating at velocities up to 6,000 fpm (30.5 m/s) and temperatures to 250°F (121°C). Absorbs unwanted crosstalk, equipment and air rush noise.

Type	Nominal Thickness	R
150	1"	4.0
150	1½"	6.0
150	2"	8.0
200	1½"	2.0
200	1"	4.2
200	1½"	6.0
200	2"	8.0
300	1½"	2.1
300	1"	4.4
300	1½"	6.5
300	2"	8.3

Complies with:  
 - ASTM C1071  
 Type I, roll insulation  
 Type II, sheet insulation  
 Thermal Performance determined by:  
 - ASTM C177 or ASTM C518  
 Acoustic Performance determined by:  
 - ASTM C423 using Type A mounting per ASTM E795

Notes:

**ToughGard® Ultra\*Round™ Spiral Duct Liner**

A high-quality acoustical and thermal insulation for lining the interior of spiral and round sheet metal ducts and plenums in HVAC systems operating at positive static air pressures, air velocities up to 6,000 fpm (30.5 m/s) and temperatures up to 250°F (121°C).

Type	Nominal Thickness	R
SD	1"	4.3
LD	1"	4.3
SD	1½"	6.5
LD	1½"	6.5
SD	2"	8.7

SD - Small Diameter  
 LD - Large Diameter  
 Please refer to spec sheet for more information.

Complies with:  
 - UL 181 for Factory Made Air Ducts and Air Connectors, Class 1 Rigid.  
 Thermal Performance determined by:  
 - ASTM C177 or ASTM C518  
 Acoustic Performance determined by:  
 - ASTM C423 using Type A mounting per ASTM E795

Notes:

**Rigid Liner Board with ToughGard® Facing**

A rigid board-type acoustical and thermal fiberglass insulation for lining the interior of sheet metal ducts and plenums in HVAC systems operating at velocities up to 6,000 fpm (30.5 m/s) and temperatures up to 250°F (121°C). Quiets HVAC noise by absorbing unwanted crosstalk, equipment and air rush noise and reduces unwanted heat gain or loss.

Nominal Thickness	R
1"	4.3
1½"	6.5
2"	8.7

Complies with:  
 - ASTM C1071  
 Type II, sheet insulation  
 Thermal Performance determined by:  
 - ASTM C177 or ASTM C518  
 Acoustic Performance determined by:  
 - ASTM C423 using Type A mounting per ASTM E795

Notes:

\*Additional R-Values and thicknesses may be available. Product availability may vary by location. Contact your CertainTeed representative for more information.

Product	Description	Product Details*	Applicable Standards
---------	-------------	------------------	----------------------

**Ultra\*Duct™  
Black Duct  
Board**

A resin-bonded glass fiber board with a reinforced foil laminate air barrier/vapor retarder on the outside surface. Ultra\*Duct Black is designed for fabrication into supply and return air duct work for HVAC systems operating at velocities up to 5,000 fpm (25.4 m/s) and temperatures up to 250°F (121°C).

Type	Nominal Thickness	R
475	1"	4.3
800	1"	4.3
800	1½"	6.5
800	2"	8.7

Complies with:  
 - UL 181 for Factory Made Air Ducts and Air Connectors, Class 1 Rigid.  
 Thermal Performance determined by:  
 - ASTM C177 or ASTM C518  
 Acoustic Performance determined by:  
 - ASTM C423 using Type A mounting per ASTM E795

Notes:

**Marine Thermal Blanket**

Used to insulate rectangular and round HVAC ductwork or as a thermal and acoustical blanket in marine and general applications. Available unfaced or with FSK vapor retarder facing. Faced products have stapling/taping tab on one edge.

Type	Nominal Thickness	R	Installed R-Value
75	1"	3.8	3.0
75	1½"	5.2	4.2
75	2"	6.9	5.7
75	2½"	7.3	6.0
75	3"	10.2	8.3
100	1"	3.8	3.0
100	1½"	5.7	4.5
100	2"	7.6	6.1
150	1"	4.1	3.2
150	1½"	6.2	4.8
150	2"	8.3	6.4

Material Standards:  
 - ASTM C1290  
 - ASTM C553  
   Type I, Type 75 Duct Wrap  
   Type II, Type 100 & 150 Duct Wrap  
   Type III, Type 150 Duct Wrap  
 - CAN/CGSB-51.11-92  
 - ASTM C1136  
   Type II: FSK

Notes:

**CrimpWrap™  
Crimped  
Pipe & Tank  
Wrap**

This product is made from a continuous fiberglass blanket. It is a unique flexible insulation composed of variably oriented glass fibers firmly bonded together with a thermosetting resin. Product is available with either foil scrim or white ASJ vapor retarder facings.

Thickness Diameter	Minimum Nominal Pipe
1"	6"
1½"	8"
2"	10"
2½"	12"
3"	16"
3½"	18"
4"	20"

Complies with:  
 - ASTM C612  
   Type IA  
   Type II, except for thermal conductivity at 75°F mean temperature  
 - ASTM C1393  
   Type IIIA, Category 2  
 Thermal Performance determined by:  
 - ASTM C177 and/or ASTM C518

Notes:

\*Additional R-Values and thicknesses may be available. Product availability may vary by location. Contact your CertainTeed representative for more information.

**Product**

**Description**

**Product Details\***

**High Temperature Blanket**

Blanket insulation composed of rotary glass fibers bonded with a thermosetting resin and formed into plain, flexible and resilient thermal insulation. Designed for use on industrial equipment, panel systems, pipe fittings and tanks operating at temperatures up to 1000 degrees (538°C).

**Applicable Standards**

Standard for Mineral Fiber Thermal Insulation for Buildings

- CAN/ULC-S702-09 Type I (pre-formed insulation without a membrane)
- ASTM C553 Types I, II, V and VI
- CAN/CGSB 51.11 Type 2 Class 4

**Density**

- Type 1: 1.25 lb/ft<sup>3</sup>
- Type 2: 2.25 lb/ft<sup>3</sup>

Type	Width	Nominal Thickness
Type 1: Rolls	24"	1"
		2"
		2½"
		3"
		3½"
		4"
	36"	1"
		2"
		2½"
		3"
		3½"
		4"
	72"	1"
		2"
		2½"
3"		
3½"		
4"		
Type 1: Batts	24"	1"
		2"
		2½"
		3"
		3½"
Type 2: Batts	24"	1"
		1½"
		2"
		2½"
		3"
		3½"
		4"

**Notes:**

\*Additional R-Values and thicknesses may be available. Product availability may vary by location. Contact your CertainTeed representative for more information.

Product	Description	Product Details*
---------	-------------	------------------

**CertaPro™  
Commercial  
Board**

Flexible to rigid boards for residential and commercial construction. Manufactured unfaced, with a reinforced white kraft and foil laminate (ASJ) or an aluminum foil, glass scrim kraft laminate (FSK).

Available in four densities:  
 CB 150: Light weight, used where flexibility is desired.  
 CB 225: Semi-rigid board type.  
 CB 300: Board type with greater rigidity and compressive strength for a smoother, more abuse-resistant surface.  
 CB 600: A rigid board product.

**Applicable Standards**

Product	ASTM C612	ASTM C553
CB 150	Type IA	Types I, II & III
CB 225	Type IA	—
CB 300	Types IA & IB	—
CB 600	Types IA & IB	—

ASTM C1136 (Facing only) Type II: FSK; Type I: ASJ

Type	Thickness	R	Facing
110	1½"	6.0	Unfaced only
110	3½"	14.0	
110	6"	25.0	
150	1½"	6.0	Unfaced only
150	2"	8.0	
150	2½"	10.0	
150	3"	12.0	
150	3½"	14.0	
150	4"	16.0	
180	1½"	6.0	Unfaced FSK ASJ
180	2"	8.0	
180	2½"	10.0	
180	3"	12.0	
180	3½"	14.0	
180	4"	16.0	
225	1"	4.2	Unfaced FSK ASJ
225	1½"	6.3	
225	2"	8.3	
225	2½"	10.4	
225	3"	12.5	
225	3½"	14.6	
225	4"	16.6	
250	1"	4.2	
250	2"	8.3	
300	1"	4.3	Unfaced FSK ASJ
300	1½"	6.5	
300	2"	8.7	
300	2½"	10.9	
300	3"	13.0	
300	3½"	15.2	
300	4"	17.4	
450	1"	4.5	Unfaced FSK ASJ
450	2"	9.1	
600	1"	4.5	Unfaced only
600	1½"	6.8	
600	2"	9.1	

**Notes:**

\*Additional R-Values and thicknesses may be available. Product availability may vary by location. Contact your CertainTeed representative for more information.

Product	Description	Product Details*	Applicable Standards
---------	-------------	------------------	----------------------

**Metal Building Insulation 202-96**

A flexible blanket insulation furnished in rolls and intended to be laminated on one side with a suitable vapor retarder. It is used as a thermal and acoustical insulation in the roofs and sidewalls of pre-engineered metal buildings and post frame construction. Plain, unfaced Metal Building Insulation 202-96 may be used as an additional layer of insulation over laminated metal building insulation in systems or over the top of BUR or single ply roofs in metal reroof applications to achieve greater thermal performance.

Nominal Thickness	Pre Lamination	Post Lamination	Length
3 <sup>3</sup> / <sub>8</sub> "	10.8	10	100'
3 <sup>3</sup> / <sub>4</sub> "	11.9	11	100'
4 <sup>3</sup> / <sub>8</sub> "	14.0	13	75'
5 <sup>1</sup> / <sub>2</sub> "	17.3	16	50'
6 <sup>3</sup> / <sub>8</sub> "	20.5	19	50'
6 <sup>3</sup> / <sub>4</sub> "	22.7	21*	45'
8"	27.0	25*	30'
9 <sup>1</sup> / <sub>2</sub> "	32.4	30*	25'

All types come in the widths 36", 48", 60", 72"

\* Made to order

Metal Building Insulation 202-96 has physical properties that regularly meet the requirements of the following specifications:  
 ASTM C991, Type I Plain and NAIMA 202-96. (Rev. 2000)

Notes:

**Universal Blanket**

Available in five different densities, Universal Blanket can be fabricated into a variety of shapes and sizes to fit almost any application. Designed for general purpose applications where a flexible thermal, acoustical insulation is required. Will withstand temperatures up to 450 degrees.

Type	Nominal Thickness
501	1 <sup>1</sup> / <sub>2</sub> "
501	2"
501	3"
501	4"
751	1 <sup>1</sup> / <sub>2</sub> "
751	2"
751	3"
751	4"
1001	1"
1001	1 <sup>1</sup> / <sub>2</sub> "
1001	2"
1001	3"
1001	4"
1501	1"
1501	1 <sup>1</sup> / <sub>2</sub> "
2001	1"

Complies with:  
 - ASTM C553  
   Type I  
   Type II  
   Type III  
 - ASTM C1139  
   Type II, Grades 1, 2, 3 & 4  
 - MIL-22023D, Type I & Type II  
 Fire Safety Standards:  
 - NFPA 90A  
 - NFPA 90B

Notes:

Product	Description	Product Details*	Applicable Standards
---------	-------------	------------------	----------------------

**OEM Acoustical Board**

Typically used for office furniture, acoustical panels, baffles, architectural panels and ceiling panels. Available in varying densities - used by fabricators who process it into finished acoustical insulation products.

Type	Nominal Thickness
300	1"
300	1½"
300	2"
300	3"
300	4"
600	1"
600	1½"
600	2"

Material Standards:  
 - OEM 300 (ASTM C612), Type IA & IB  
 - OEM 600 (ASTM C612), Type IA & IB  
 Fire Resistance:  
 - Fire Hazard Classification: (ASTM E84, UL 723, NFPA 255)  
 - Max. Flame Spread Index 25  
 - Max. Smoke Developed Index 50

Notes:

**CertaPro™ AcoustaBoard™ Black**

Rigid or semi-rigid fiberglass board with a black mat facing for acoustical applications in sound studios or other acoustically sensitive applications requiring a black exposed surface.  
 Available in two densities: Semi-rigid board type.  
 Board type with greater rigidity and compressive strength for a smoother, more abuse-resistant surface.

Type	R	Thickness
225	4.3	1"
225	6.5	1½"
225	8.7	2"
300	4.3	1"
300	6.5	1½"
300	8.7	2"

Product	ASTM C612
Type 225	Type IA
Type 300	Types IA & IB

Notes:

**CertaPro™ AcoustaBlanket™ Black**

1/2" to 2" thick black fiberglass blanket with a durable fire-resistant black composite surface used for acoustical control applications in theaters, sound studios or other acoustically sensitive applications requiring a black exposed surface.

Type	R	Thickness
150	4.2	1"
150	6.3	1½"
150	8.3	2"
200	2.1	½"

Complies with:  
 - ASTM C553 Type I and II  
 Acoustic Performance determined by:  
 - ASTM C423 using Type A mounting  
 Thermal resistance determined by:  
 - ASTM C177 or C518

Notes:

\*Additional R-Values and thicknesses may be available. Product availability may vary by location. Contact your CertainTeed representative for more information.



## Product Characteristics

### Sound Transmission Loss

CertainTeed's fiberglass products can reduce sound transmission when properly installed in construction assemblies and can add from 3 to 12 points to the STC rating depending on the type of assembly. The actual rating is dependent on the workmanship, mass of total material, thickness of insulation and the air tightness of the construction. In assemblies, separation of the wall

surfaces plus the addition of insulation in stud cavities are the most effective means of reducing sound transmission. This may be accomplished by installing resilient channels on one side of the partition, or with staggered or double wall constructions. The table on the following page lists some typical sound rated partition assemblies.

### Fire Safety

CertainTeed Unfaced Fiberglass Building Insulation products are noncombustible per ASTM E136 test criteria.

Many building codes require that foam plastic insulation be covered with an approved 15-minute thermal barrier. Consult local building code officials to ensure the application meets local building codes and regulations.

### Surface Burning Characteristics

These products have the following maximum flame spread and smoke developed ratings when tested per ASTM E84:

Product	Flame Spread	Smoke Developed
SoftTouch™ Duct Wrap	25	50
Wide Wrap Duct Wrap	25	50
ToughGard® R Duct Liner	25	50
ToughGard® T Textile Duct Liner	25	50
ToughGard® Ultra*Round™ Spiral Duct Liner	25	50
Rigid Liner Board with ToughGard® Facing	25	50
Ultra*Duct™ Black Duct Board	25	50
Marine Thermal Blanket	25	50
CrimpWrap™ Crimped Pipe & Tank Wrap	25	50
High Temperature Blanket	25	50
CertaPro™ Commercial Board	25	50
Metal Building Insulation	25	50
Universal Blanket	25	50
OEM Acoustical Board	25	50
CertaPro™ AcoustaBoard™ Black	25	50
CertaPro™ AcoustaBlanket™ Black	25	50

FSK-25 and standard foil-faced insulation products have a critical radiant flux flame propagation resistance equal to or greater than 0.12 w/cm<sup>2</sup>.

## Approximate STC Ratings

Steel Stud Partitions With Gypsum Wallboard Facings (1/2" & 5/8")	No Insulation				3 1/2" of CertainTeed Fiberglass Insulation Batts			
	16" O.C. 2 1/2" Studs		24" O.C. 3 5/8" Studs		16" O.C. 2 1/2" Studs		24" O.C. 3 5/8" Studs	
	1/2"	5/8"	1/2"	5/8"	1/2"	5/8"	1/2"	5/8"
Single layer facings	36	39	36	39	45	47	48	50
Double layer one side, single layer other side	39	44	42	47	51	52	52	55
Double layer each side	45	48	50	52	55	57	55	58

## Guide Specifications for CertainTeed Fiberglass Thermal and Acoustical Insulations

Note to the specifier: Provide information as required; delete inappropriate items and fill in where indicated.

This guide specification applies to thermal and acoustical insulation in walls, ceilings and floors. It follows Construction Specifications Institute (CSI) format.

### PART 1 - GENERAL

#### 1.01 Work Included

State type of insulation and where it is to be installed.

#### 1.02 Related Work

State if separate vapor retarder and/or air barrier is to be installed.

#### 1.03 References

Include appropriate insulation standards.

### PART 2 - PRODUCTS

#### 2.01 Acceptable Manufacturers

CertainTeed Corporation

#### 2.02 Materials

##### Thermal Insulation

Insulation for (ceilings) (walls) (floors) (ducts) shall be CertainTeed \_\_\_\_\_

\_\_\_\_\_ inches thick,

with R-Value of \_\_\_\_\_,

or Insulation for (ceilings) (or other approved location) shall be CertainTeed \_\_\_\_\_ installed at minimum of \_\_\_\_\_

\_\_\_\_\_ inches thick,

with \_\_\_\_\_ bags/1,000 sq. ft.

for R-Value of \_\_\_\_\_.

##### Sound Control Insulation

Insulation for (ceilings) (walls) (floors) shall be CertainTeed \_\_\_\_\_.

### PART 3 - EXECUTION

#### 3.01 Preparation

Verify that mechanical and electrical services in (ceilings) (walls) (floors) have been installed and tested and, if appropriate, verify that adjacent materials are dry and ready to receive insulation.

#### 3.02 Installation

Installation shall be in accordance with CertainTeed's instructions.

## Guide Specifications for CertainTeed Technical Fiberglass Insulation Products

### PART 1 - GENERAL

#### 1.01 Summary

A. This section includes commercial building thermal/acoustical insulation for application to:

1. Exterior building walls;
2. Interior partition walls, shaft walls, and other interior surfaces;
3. Ceiling suspension systems.

#### 1.02 Submittals

A. Prepare and submit for approval information as required by the conditions of the contract and Division 1 Submittals sections.

B. Submit product data for each thermal and acoustical insulation product specified.

#### 1.03 Quality Assurance

A. Installers shall be qualified to perform work of this section and shall be experienced in the performance of installation operations as appropriate to the project.

#### 1.04 Delivery and Storage

A. Deliver all insulation materials and accessories to the project site in manufacturer's original, unopened, undamaged packaging, with all identification labels intact. Store in a safe place protected from dust, dirt, moisture and physical abuse before and during installation.

### PART 2 - PRODUCTS

#### 2.01 Approved Manufacturer and Products

A. All thermal/acoustical insulation materials shall be in accordance with Division 1 Submittals, manufactured by CertainTeed Corporation, including but not limited to:

1. SoftTouch™ Duct Wrap
2. Wide Wrap Duct Wrap
3. ToughGard® R Duct Liner
4. ToughGard® T Textile Duct Liner
5. ToughGard® Ultra\*Round™ Spiral Duct Liner
6. Rigid Liner Board with ToughGard® Facing
7. Ultra\*Duct™ Black Duct Board

- 8. Marine Thermal Blanket
  - 9. CrimpWrap™ Crimped Pipe & Tank Wrap
  - 10. High Temperature Blanket
  - 11. CertaPro™ Commercial Board, Unfaced, FSK Faced, ASJ Faced
  - 12. Metal Building Insulation
  - 13. Universal Blanket
  - 14. OEM Acoustical Board
  - 15. CertaPro™ AcoustaBoard™ Black
  - 16. CertaPro™ AcoustaBlanket™ Black
- B. Where applicable, specify product thicknesses, length/width dimensions and density to meet thermal and acoustical performance specifications.
- C. Specify type of vapor retarder facing to meet water vapor transmission and fire rating specifications.

**2.02 Products and Applications**

- 1. SoftTouch™ Duct Wrap  
Type: \_\_\_\_\_.  
R-Value: \_\_\_\_\_.
- 2. Wide Wrap Duct Wrap  
Type: \_\_\_\_\_.  
R-Value: \_\_\_\_\_.
- 3. ToughGard® R Duct Liner  
Type: \_\_\_\_\_.  
R-Value: \_\_\_\_\_.
- 4. ToughGard® T Textile Duct Liner  
Type: \_\_\_\_\_.  
R-Value: \_\_\_\_\_.
- 5. ToughGard® Ultra\*Round™ Spiral Duct Liner  
Type: \_\_\_\_\_.  
R-Value: \_\_\_\_\_.
- 6. Rigid Liner Board with ToughGard® Facing  
R-Value: \_\_\_\_\_.
- 7. Ultra\*Duct™ Black Duct Board  
Type: \_\_\_\_\_.  
R-Value: \_\_\_\_\_.
- 8. Marine Thermal Blanket  
Type: \_\_\_\_\_.
- 9. CrimpWrap™ Crimped Pipe & Tank Wrap  
Thickness: \_\_\_\_\_.
- 10. High Temperature Blanket  
R-Value: \_\_\_\_\_.
- 11. CertaPro™ Commercial Board, Unfaced, FSK Faced, ASJ Faced  
Type: \_\_\_\_\_.  
R-Value: \_\_\_\_\_.
- 12. Metal Building Insulation  
R-Value: \_\_\_\_\_.
- 13. Universal Blanket  
Type: \_\_\_\_\_.  
R-Value: \_\_\_\_\_.

- 14. OEM Acoustical Board  
Type: \_\_\_\_\_.
- 15. CertaPro™ AcoustaBoard™ Black  
Type: \_\_\_\_\_.  
R-Value: \_\_\_\_\_.
- 16. CertaPro™ AcoustaBlanket™ Black  
Type: \_\_\_\_\_.  
R-Value: \_\_\_\_\_.

**PART 3 - EXECUTION**

**3.01 Inspection**

- A. Verify that all insulation may be installed in accordance with project drawings, design requirements and fire ratings.
- B. Confirm that all exterior and interior wall, partition, and floor/ceiling assembly construction has been completed to the point where the insulation may be correctly installed.

**3.02 Installation**

- A. Install all insulation in compliance with manufacturer's published instructions and good workmanship so that acoustical and thermal performance requirements are met.

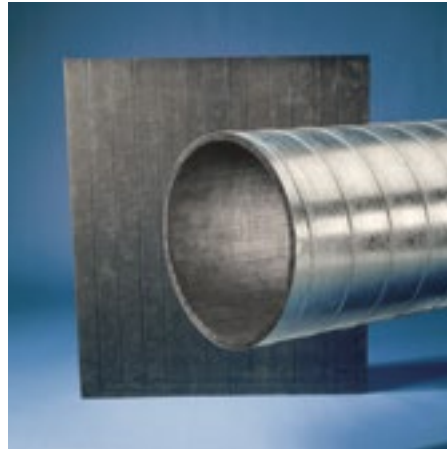
**3.03 Safety Precautions**

- A. Properly protect insulation contractor's employees during installation of all insulation. Protection shall include proper attire when handling and applying insulation materials, and shall include but not be limited to gloves, hard hats, disposable dust respirators, and eye protection.
- B. Conduct all job site operations in compliance with applicable provisions of the Occupational Safety and Health Act and/or local safety and health codes and regulations.

For every insulation challenge,  
there's a CertainTeed solution.



Mechanical



HVAC



OEM



Metal Building Insulation



Marine & Industrial



Equipment

learn more at: [certainteed.com/technicalinsulation](http://certainteed.com/technicalinsulation)



**CertainTeed Corporation**

CEILING • DECKING • FENCE • GYPSUM • INSULATION • RAILING • ROOFING • SIDING • TRIM

20 Moores Road Malvern, PA 19355 Professional: 800-233-8990 Consumer: 800-782-8777 [certainteed.com](http://certainteed.com)

© 9/18 CertainTeed Corporation, Printed in the USA, Code No. 30-36-125