

CertainTeed



Noise-Reducing Gypsum Board

Product Data and Submittal

Product Description

SilentFX® QuickCut™ Noise-Reducing Gypsum Board is specifically designed to reduce airborne sound transmission between two adjoining spaces when used in wall or floor/ceiling assemblies. SilentFX QuickCut features a viscoelastic polymer that dampens sound energy. Application of the viscoelastic polymer between two specially formulated dense gypsum cores results in a combination that significantly improves sound attenuation and is ideal for systems requiring high STC performance. Commercial acoustic systems featuring SilentFX QuickCut provide STC ratings of 50 and up. In addition to providing exceptional acoustic performance, this functionally superior board is engineered to score and snap for faster installation and lower labor costs.

Basic Uses

1/2" SilentFX QuickCut Gypsum Board is intended for use on interior walls in residential applications. 5/8" SilentFX QuickCut Type X Gypsum Board has many potential applications for use on interior walls and ceilings in commercial or institutional applications. SilentFX QuickCut can be used for new construction and renovations over wood or steel framing. SilentFX QuickCut is typically nailed or screwed to studs spaced 16" (406 mm) or 24" (610 mm) o.c.

Advantages

- Features viscoelastic polymer for superior noise damping.
- SilentFX QuickCut systems improve sound attenuation with STC ratings of 50 and higher.
- High STC ratings with fewer layers of gypsum board than traditional assemblies.
- Abuse resistant per ASTM C1629.
- M2Tech paper provides additional zone of protection against moisture and mold.
- Achieves best possible score of 10 for mold resistance per ASTM D3273*.
- Finishes like standard gypsum board.
- Regular and Type X products available.
- GREENGUARD Gold Certified

Product Data

Thicknesses:

Nominal 1/2" (12.7 mm)
5/8" (15.9 mm) Type X

Weights:

1/2" (12.7 mm) 2.1 psf (10.3 kg/m²)
5/8" (15.9 mm) 2.8 psf (13.7 kg/m²)

Width: 4' (1220 mm)

Lengths: 8' (2440 mm) - 12' (3660 mm)

Custom lengths may be available upon request. Contact your nearest CertainTeed Sales representative for stocked lengths.

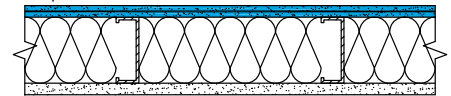
Edges: Tapered

Packaging: Two pieces per bundle, face-to-face and end taped.

Technical Data

Acoustic Performance

SilentFX QuickCut 5/8" Type X



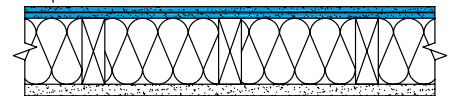
CertainTeed 5/8" Type X

Thickness: 4 7/8"

Fire Resistance Based Upon:
UL/cUL Design V486 and V450
STC 56

Sound Test: OL 17-0221

SilentFX QuickCut 5/8" Type X



CertainTeed 5/8" Type X

Thickness: 5 1/4"

Fire Resistance Based Upon:
UL/cUL Design U309
STC 51

Sound Test: OL 15-0503

Fire Resistance

5/8" SilentFX QuickCut Type X Gypsum Board is UL/cUL Classified for Fire Resistance in accordance with ASTM E119 (UL 263, CAN/ULC-S101) and may be substituted for CertainTeed Type X and M2Tech Type X Gypsum Board in multiple UL/cUL fire-rated designs.

UL/ cUL/ ULC Designation

SilentFX

Continued on back

Job Name

Contractor

Date

Products Specified:

Submittal Approvals
(Stamps or Signatures)

CertainTeed
SAINT-GOBAIN

Surface Burning Characteristics

SilentFX QuickCut Gypsum Boards have a Flame Spread rating of 0 and Smoke Developed rating of 0 when tested in accordance with ASTM E84 (UL 723) and 0/5 ratings per CAN/ULC-S102).

Abuse Resistance

| ASTM C1629 | Test Method | Classification Level |
|------------------|-------------|----------------------|
| Surface Abrasion | D4977 | 2 |
| Soft Body Impact | E695 | 1 |

Applicable Standards and References

- Manufactured to meet ASTM C1766 and applicable sections of C1396
- ASTM C1629
- CAN/CSA-A82.27
- ASTM E90, E413
- ASTM C840
- Gypsum Association GA-216
- Gypsum Association GA-214
- International Building Code (IBC)
- International Residential Code (IRC)
- National Building Code of Canada (NBCC)

Installation

Limitations

- Avoid exposure to water or excessive moisture during transportation, storage, handling, during or after installation. Good design and construction practices that prevent water and moisture exposure of building products are the most effective strategy to avoid the growth of mold.
- 1/2" (12.7 mm) SilentFX QuickCut is not recommended for ceiling applications.
- Not recommended for exterior application.
- SilentFX QuickCut Gypsum Boards are not recommended for areas which will be continuously wet or subjected to high humidity such as tub and shower enclosures behind tile, saunas, steam rooms or gang showers.

- Not recommended for continuous exposure to temperatures exceeding 125°F (52°C).
- Ceiling framing spacing should not exceed 16" (406 mm) o.c. for parallel or 24" (610 mm) o.c. for perpendicular application of 5/8" SilentFX QuickCut Type X Gypsum Board.
- Wall framing spacing should not exceed 24" (610 mm) o.c.
- Store indoors and off ground surface. Boards should be stacked flat with care taken to prevent sagging or damage to edges, ends and surfaces.
- Storing board lengthwise leaning against the framing is not recommended.
- Boards should be carried, not dragged, to place of installation to prevent damaging finished edges.
- SilentFX QuickCut boards are cut by scoring from the face side and snapping.
- In cold weather or during joint finishing applications, temperatures within the enclosure should stay in the range of 50° to 95°F (10° to 35°C) with sufficient ventilation to carry off excess moisture.

Decoration

SilentFX QuickCut Gypsum Board may be finished, painted, or wallpapered using conventional gypsum board techniques. The Gypsum Association publication, GA-214, "Recommended Levels of Gypsum Board Finish" should be referenced when specifying the level of finishing required for the desired final decoration.

- * The performance of SilentFX QuickCut Gypsum Boards in actual use may not accurately reproduce the results achieved in this ASTM laboratory test. Good design and construction practices that prevent water and moisture exposure of building products are the most effective strategy to avoid the growth of mold.

For the optimal performance of the SilentFX QuickCut system, it is important to think about and plan for sound flanking. Undesirable sounds will travel through flanking paths such as wall penetrations, ductwork, framing, recessed lighting, and concrete slabs. Sealing wall and ceiling assemblies using the following tips will help ensure optimal system performance:

- Allow an approximate 1/4" gap along all wall perimeter edges and completely seal this gap with an acoustical sealant
- Use a sealant such as Green Glue sealant and apply per ASTM C919
- Limit wall penetrations to one per stud cavity
- Stagger board joints from one side of the wall to the other
- Refrain from any wall penetrations when possible
- Mold an acoustical putty around outlet boxes and plumbing fixtures to prevent sound flanking

BIM/CAD Information

The BIM and CAD UL fire rated assemblies and sound assemblies can be found on CertainTeed's BIM and CAD Design Studio at certainteed.concora.com. CertainTeed's BIM and CAD Design Studio provides BIM and CAD details to many UL fire rated assemblies and sound assemblies in easy to view experience. Plus, downloadable Revit and DWG and PDF CAD Details are available.

Sustainability

Sustainable documentation, including recycled content, EPD's, HPD's, VOC Certifications, can be found at certainteed.ecomedes.com.

Notice

The information in this document is subject to change without notice. CertainTeed assumes no responsibility for any errors that may inadvertently appear in this document.

For Fire Resistance, no warranty is made other than conformance to the standard under which the assembly was tested. Minor discrepancies may exist in the values of ratings, attributable to changes in materials and standards, as well as differences between testing facilities. Assemblies are listed as "combustible" (wood framing) and "noncombustible" (concrete and/or steel construction).



The Health Product Declaration® logo is a registered trademark of HPD Collaborative.



CertainTeed

CEILINGS • DECKING • FENCE • GYPSUM • INSULATION • RAILING • ROOFING • SIDING • TRIM

20 Moores Road Malvern, PA 19355 Professional: 800-233-8990 Consumer: 800-782-8777 certainteed.com