



**BUILDING CODE COMPLIANCE OFFICE (BCCO)
PRODUCT CONTROL DIVISION**

**MIAMI-DADE COUNTY, FLORIDA
METRO-DADE FLAGLER BUILDING
140 WEST FLAGLER STREET, SUITE 1603
MIAMI, FLORIDA 33130-1563
(305) 375-2901 FAX (305) 375-2908**

NOTICE OF ACCEPTANCE (NOA)

**CertainTeed Corporation.
1400 Union Meeting Road
Blue Bell, PA 19422**

SCOPE: This NOA is being issued under the applicable rules and regulations governing the use of construction materials. The documentation submitted has been reviewed by the BCCO and accepted by the Building Code and Product Review Committee to be used in Miami Dade County and other areas where allowed by the Authority Having Jurisdiction (AHJ).

This NOA shall not be valid after the expiration date stated below. The Miami-Dade County Product Control Division (In Miami Dade County) and/or the AHJ (in areas other than Miami Dade County) reserve the right to have this product or material tested for quality assurance purposes. If this product or material fails to perform in the accepted manner, the manufacturer will incur the expense of such testing and the AHJ may immediately revoke, modify, or suspend the use of such product or material within their jurisdiction. BORA reserves the right to revoke this acceptance, if it is determined by Miami-Dade County Product Control Division that this product or material fails to meet the requirements of the applicable building code.

This product is approved as described herein, and has been designed to comply with the Florida Building Code, including the High Velocity Hurricane Zone of the Florida Building Code.

DESCRIPTION: Symphony Slate

LABELING: Each unit shall bear a permanent label with the manufacturer's name or logo, city, state and following statement: "Miami-Dade County Product Control Approved", unless otherwise noted herein.

RENEWAL of this NOA shall be considered after a renewal application has been filed and there has been no change in the applicable building code negatively affecting the performance of this product.

TERMINATION of this NOA will occur after the expiration date or if there has been a revision or change in the materials, use, and/or manufacture of the product or process. Misuse of this NOA as an endorsement of any product, for sales, advertising or any other purposes shall automatically terminate this NOA. Failure to comply with any section of this NOA shall be cause for termination and removal of NOA.

ADVERTISEMENT: The NOA number preceded by the words Miami-Dade County, Florida, and followed by the expiration date may be displayed in advertising literature. If any portion of the NOA is displayed, then it shall be done in its entirety.

INSPECTION: A copy of this entire NOA shall be provided to the user by the manufacturer or its distributors and shall be available for inspection at the job site at the request of the Building Official.

This NOA consists of pages 1 through 8.
The submitted documentation was reviewed by Alex Tigera.



**NOA No. 09-0901.12
Expiration Date: 05/05/15
Approval Date: 05/05/10
Page 1 of 8**

ROOFING ASSEMBLY APPROVAL

Category: Roofing
Sub-Category: Slate
Materials: Composite
Deck Type: Wood
Maximum Design Pressure -163.5 psf
Fire Classification Pressure See General Limitation #1

TRADE NAMES OF PRODUCTS MANUFACTURED OR LABELED BY APPLICANT:

<u>Product</u>	<u>Dimensions</u>	<u>Test Specifications</u>	<u>Product Description</u>
Symphony Slate	18" long 12", 9", and 6" widths ³ / ₈ " thick	TAS 110	Slate looking composite shingle with tapered back. Available in Colonial Gray, Capital Blend, and Evergreen color combinations.

MANUFACTURING LOCATION:

1. Oxford, NC.

EVIDENCE SUBMITTED:

<u>Test Agency</u>	<u>Test Identifier</u>	<u>Test Name/Report</u>	<u>Date</u>
PRI Asphalt Technologies	CTC-042-02-01	TAS 100	01/08/09
	CTC-036-02-01	ASTM D 638/ASTM G 155	04/08/09
	CTC-053-02-01	TAS 100	12/01/09
ETC Laboratories	ETC-08-718-21740.0	ASTM D 1929 ASTM D 2843 ASTM D 635	10/07/08
Underwriters Laboratories, Inc.	09NK15269	UL 580	02/04/10
	06CA51583	UL 790	03/12/08



APPROVED SYSTEMS:

Deck Type: Wood, Non-insulated
Deck Description: $1\frac{9}{32}$ " or greater plywood or wood plank.
Slope Range: 3:12 or greater

Deck Attachment: In accordance with applicable Building Code, but in no case shall it be less than #8 x 2-1/2" wood screws spaced 6" o.c. In reroofing, where the deck is less than $1\frac{9}{32}$ " thick (Minimum $1\frac{5}{32}$ ") The above attachment method must be in addition to existing attachment.

Underlayment: Underlayment shall be applied in accordance with applicable Building Code. One layer of ASTM D 226 Type II felt overlapped 19" and 6" end lap. Underlayment shall be installed with minimum 12 ga. corrosion resistant ring shank nails and tin caps, spaced 12" o.c. staggered in the field and 6" o.c. at the laps. Or, any approved underlayment having a current NOA.

Valleys: Valley metal shall be a minimum 16" wide. Valley metal shall be set over a minimum 36" wide sweat sheet of minimum ASTM D 226 type II embedded in roofing cement, or an approved self-adhered membrane. Valley metal shall imbedded in roofing cement and be secure with roofing nails spaced a maximum 4" o.c. at outer most part of metal on each side. Valley edges shall be primed and embed a 6" wide asphalt coated fabric in a 8" wide bed of roofing cement. Place a second coat of roofing cement over the fabric. Valley detail shall be in accordance with the current published manufacturer's literature.

Ridge & Hips: Ridges shall be covered with panels having a width that is approximately the same as the field exposure. Pre-manufactured hip and ridge units shall be fastened on each side of ridge or hip with one 1-1/2" long with 3/8" diameter head corrosion resistant ring shank nails through the marked nail locations. Nail shall of sufficient length to penetrate through the sheathing $\frac{3}{16}$ ". See Certainteed Corporation's published installation manual for detail.

Starter: Install required starter over the edge a 1". Fasten each starter with a minimum of two corrosion resistant roofing nails. Nails shall be of sufficient length to penetrate sheathing $\frac{3}{16}$ ". **(See Detail 'B')**

Field Condition Application: Symphony Slate shall be installed in accordance with Certainteed Corporation's current published installation manual. Symphony Slate shall have a maximum 8" exposure **(see Detail 'C')**.

Symphony Slate shall be fastened with a minimum of two (2) 1-1/2" long with 3/8" diameter head, corrosion resistant ring shank nails through the marked nail locations **(see Detail 'A')** and shall penetrate through underlying panel. Nails shall be of sufficient length to penetrate through the sheathing a minimum of $\frac{3}{16}$ ".

**Field Condition
Maximum Uplift
Pressure:**

The maximum allowable uplift pressure shall be **-74.75 psf**.

MIAMI-DADE COUNTY
APPROVED

NOA No. 09-0901.12
Expiration Date: 05/05/15
Approval Date: 05/05/10

**Perimeter and
Corner Condition
Application:**

Symphony Slate shall be installed in accordance with Certainteed Corporation's current published installation manual. Symphony Slate shall have a maximum 8" exposure (see **Detail 'C'**).

Symphony Slate shall be fastened with a minimum of four (4) 1-1/2" long with 3/8" diameter head, corrosion resistant ring shank nails through the marked nail locations (see **Detail 'A'**) and shall penetrate through underlying panel. Nails shall be of sufficient length to penetrate through the sheathing a minimum of $3/16$ ".

**Perimeter and
Corner Condition
Maximum Uplift
Pressure:**

The maximum allowable uplift pressure shall be **-163.5 psf**.



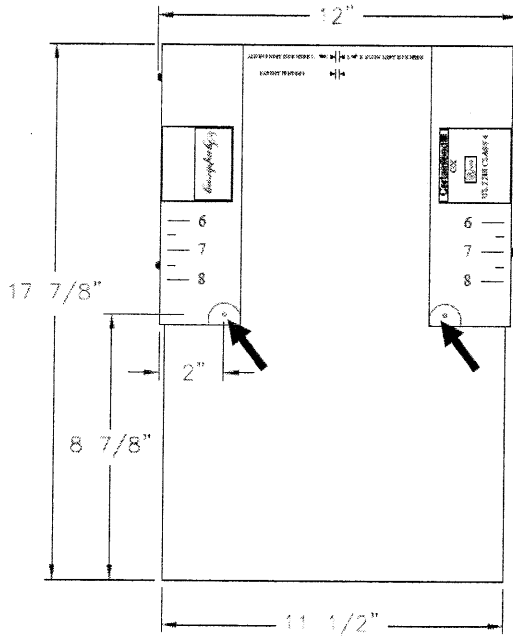
GENERAL LIMITATIONS:

1. Fire classification is not part of this acceptance; refer to a current Approved Roofing Materials Directory for fire ratings of this product.
2. The maximum designed pressure limitation listed shall be applicable to all roof pressure zones (i.e. field, perimeters, and corners). Neither rational analysis, nor extrapolation shall be permitted for enhanced fastening at enhanced pressure zones (i.e. perimeters, extended corners and corners).
3. All panels shall be permanently labeled with the manufacturer's name or logo, city, state and the following statement: "Miami Dade County Product Control Approved".
4. All products listed herein shall have a quality assurance audit in accordance with the Florida Building Code and Rule 9B-72 of the Florida Administrative Code.



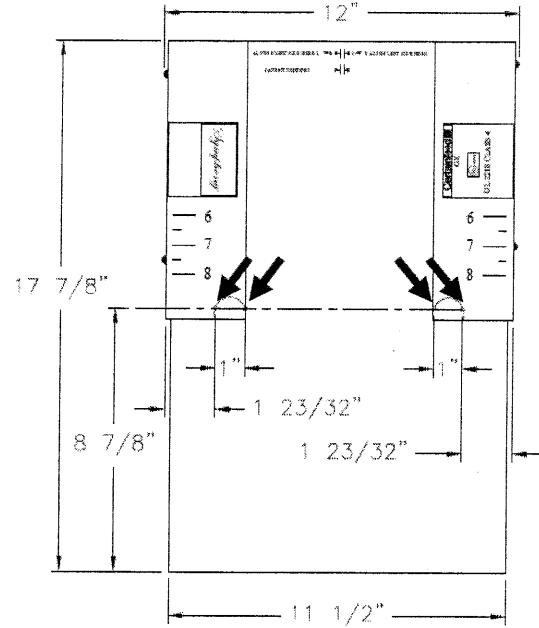
**DRAWINGS
DETAIL A**

**FIELD CONDITION
FASTENING LOCATIONS SHOWN**

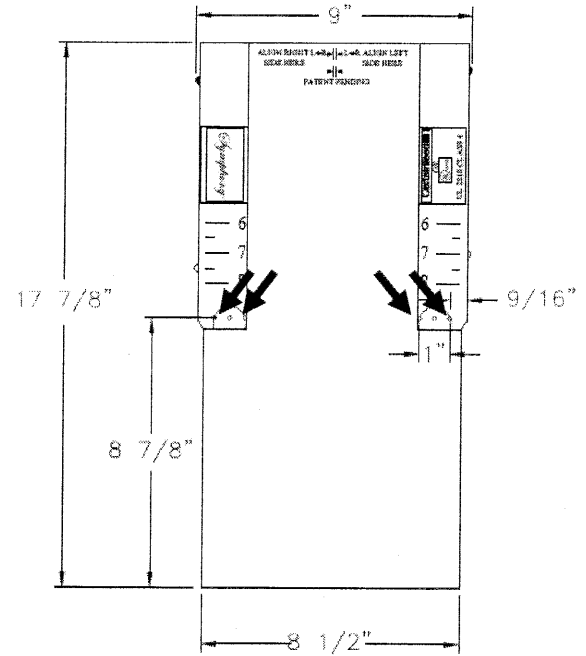
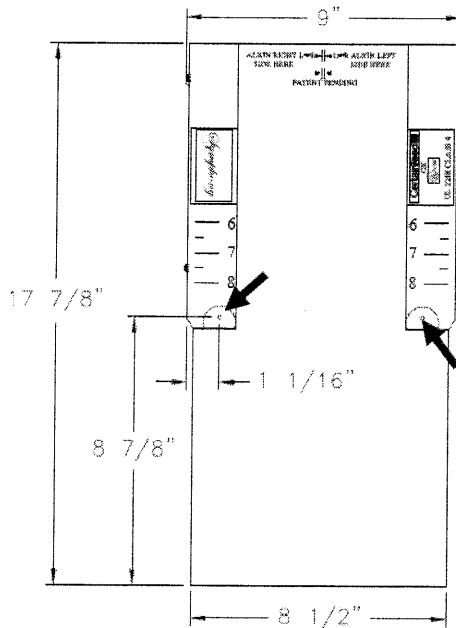


**PERIMETER AND CORNER
FASTENING LOCATIONS SHOWN**

12" WIDE



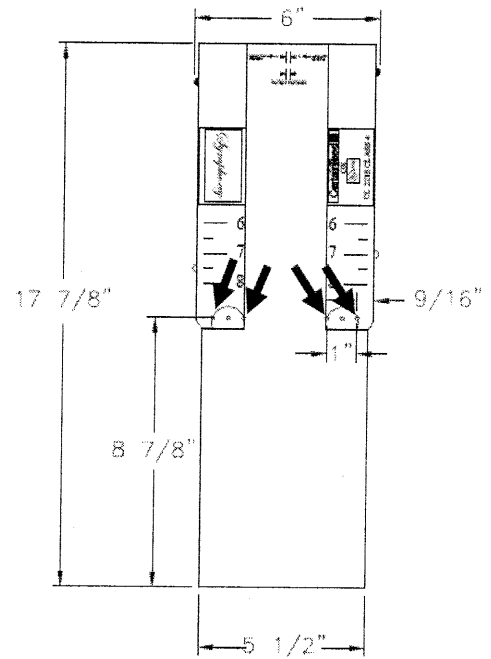
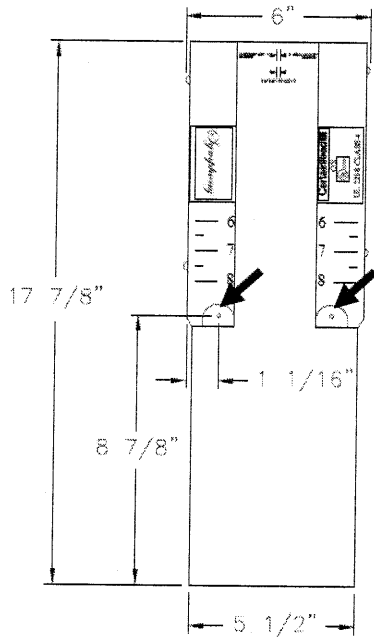
9" WIDE



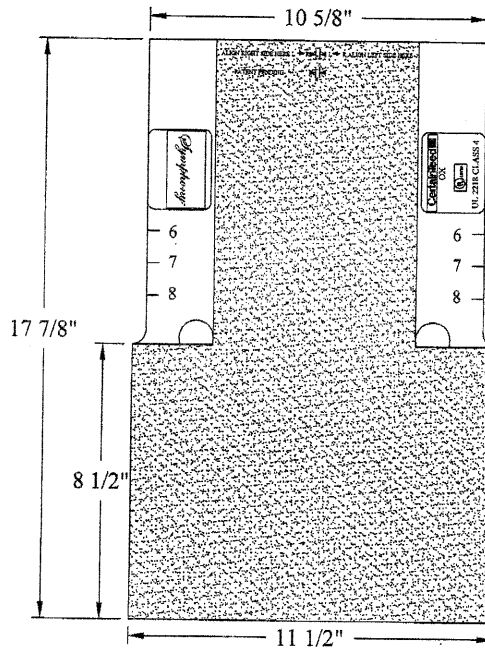
**FIELD CONDITION
FASTENING LOCATIONS SHOWN**

**PERIMETER AND CORNER
FASTENING LOCATIONS SHOWN**

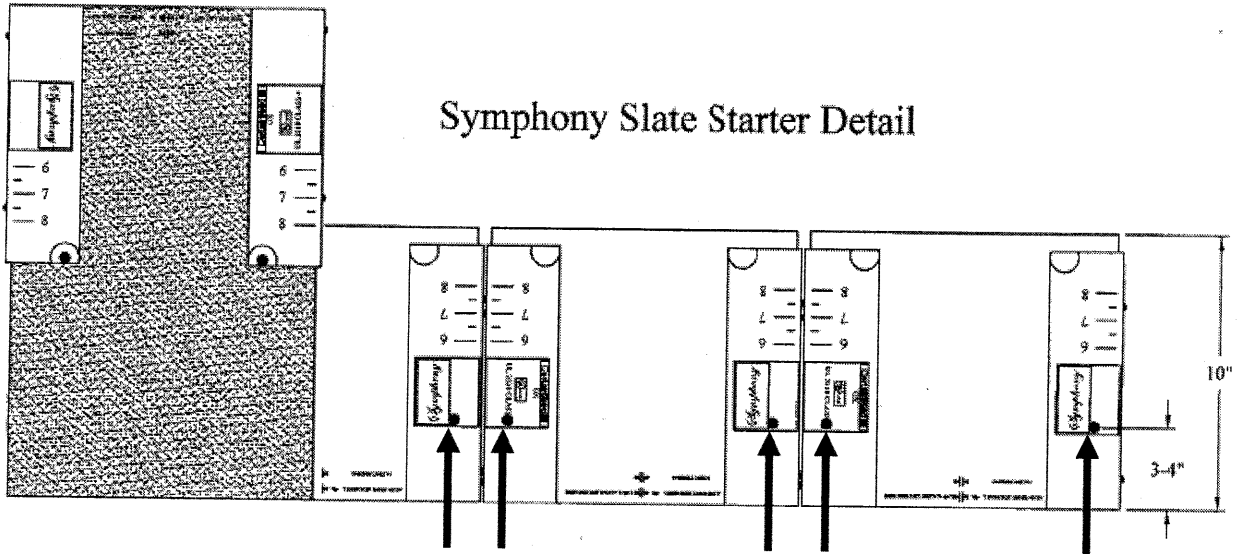
6" WIDE



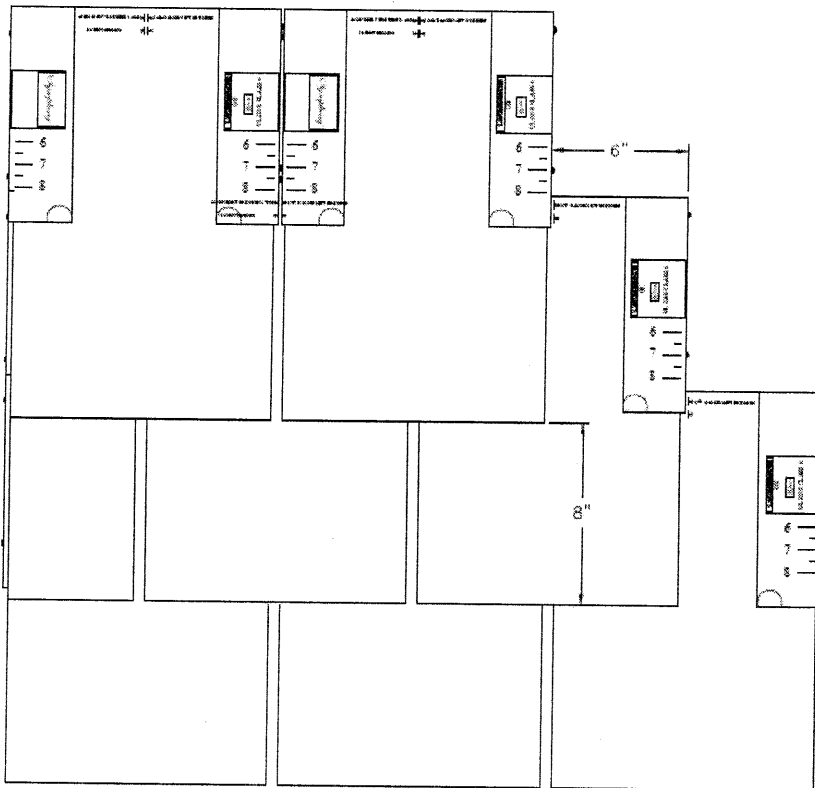
HIP AND RIDGE SLATE



DETAIL B



DETAIL C



END OF THIS ACCEPTANCE



NOA No. 09-0901.12
Expiration Date: 05/05/15
Approval Date: 05/05/10
Page 8 of 8