

# Lay-In Levels - Colors & Finishes

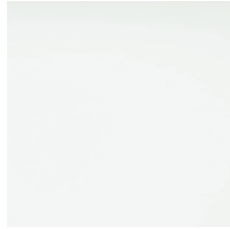
A wide choice of colors and finishes are available and some carry a premium price over manufacturer's standard colors. Custom color matching is available upon request. Minimum quantities and lead times may apply.

NOTE: Colors are for illustration purposes only.

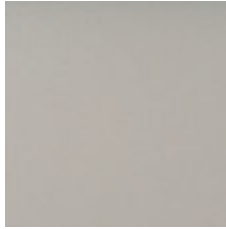
## Standard Paint Colors



**NATURAL**  
7163



**COTTON WHITE**  
0280

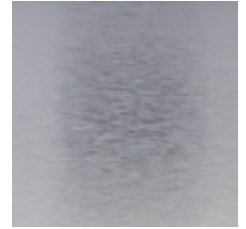


**ATLANTIC GREY**  
1117



**PREMIUM  
CUSTOM COLORS**

## Standard Metallic

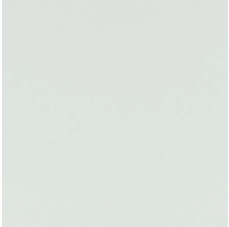


**BRUSHED  
ALUMINUM**  
0004

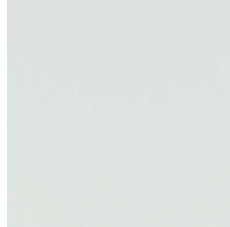
## White Finish Options

White Finish Options: Powder-coat paint finish for Arctic White #1015P (Gloss 10-20); Crystalline White #1050P (Gloss 45-55); Supernova White #1085P (Gloss 80-90).

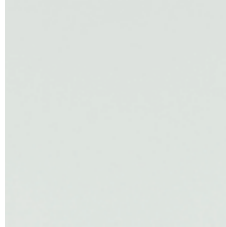
Performance White: Powder-coat paint finish offering LRV 96; non-glare, 3% low gloss finish. Certified by: Applied Technical Services, Inc. Test Report No. D233185. Test reports available by request.



**ARCTIC WHITE**  
1015P

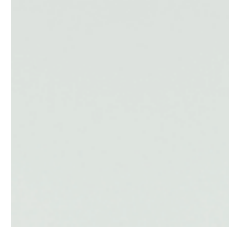


**CRYSTALLINE  
WHITE**  
1050P



**SUPERNOVA  
WHITE**  
1085P

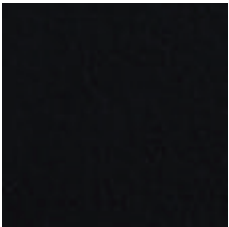
## Daylight Paint Finish



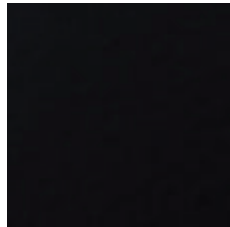
**PERFORMANCE  
WHITE**  
9603P

## Black Finish Options

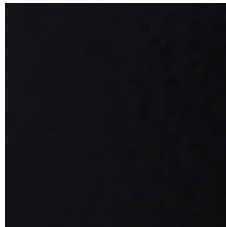
Powder-coat paint finish for Starless Black #5000P (Matte); Raven Black #5030P (Gloss-25-35); Sable Black #5060P (Gloss 65-75); Wet Glass Black #5095P (Gloss 90-95)



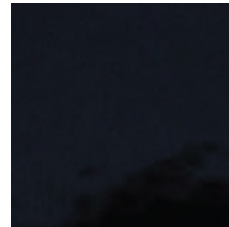
**STARLESS  
BLACK**  
5000P



**RAVEN  
BLACK**  
5030P



**SABLE  
BLACK**  
5060P



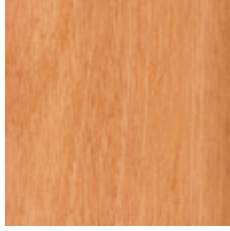
**WET GLASS  
BLACK**  
5095P

## Laminated (Film) Wood Finishes

Film (interior only). Formaldehyde-free, Class A composite panel. Minimums apply.



AMERICAN  
NATURAL  
8000



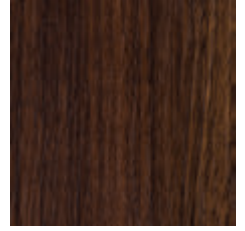
RUSSIAN MAPLE  
8003



CARAMEL  
BAMBOO  
8030



HAYWARD  
CHERRY  
8005



NORTHERN  
WALNUT  
8105



CHATHAM OAK  
8107