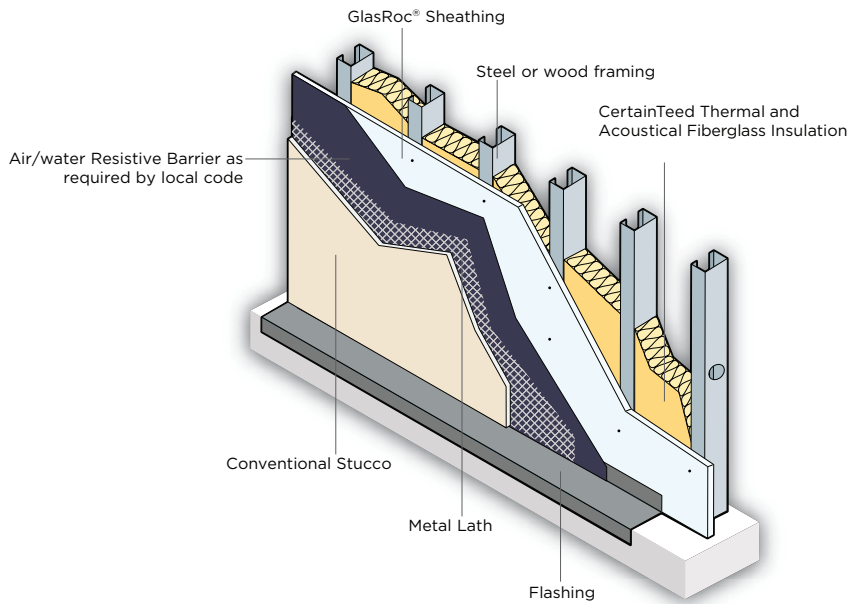


GlasRoc® Sheathing

EXTERIOR WALL SYSTEMS



CONVENTIONAL STUCCO APPLICATIONS

GlasRoc® Sheathing's engineered glass mat with its high surface bond strength provides an excellent water-resistant surface for conventional stucco applications. The treated core adds to the water-resistive performance of the product. Conventional stucco systems rely on the structural soundness of the sheathing component to which they are applied. GlasRoc Sheathing offers physical properties superior to competitive gypsum sheathing products in the market. It is manufactured to meet or exceed the physical property requirements outlined in ASTM C1177.

INSTALLATION RECOMMENDATION

In a conventional stucco system, metal lath or other specified self-furring components should be attached to the framing members through the GlasRoc Sheathing, after the appropriate flashing is installed. Always use appropriate joint treatment when required. Apply the stucco, as recommended by the manufacturer.

REFERENCED STANDARDS

- ASTM C514: Specification for Nails for the Application of Gypsum Board
- ASTM C954: Specification for Steel Drill Screws for the Application of Gypsum Panel Products or Metal Plaster Bases to Steel Studs from 0.33" (0.84 mm) to 0.112" (2.84 mm) in Thickness
- ASTM C1002: Standard Specification for Steel Drill Screws for the Application of Gypsum Panel Products or Metal Plaster Bases
- ASTM C1177: Standard Specification for Glass Mat Gypsum Substrate for Use as Sheathing
- ASTM C1280: Standard Specification for Application of Gypsum Sheathing
- CAN/ULC-S102 (ASTM E84): Test Method for Surface Burning Characteristics of Building Materials
- ASTM E96: Test Methods for Water Vapour Transmission of Materials
- CAN/ULC-S101 (ASTM E119): Test Method for Fire Tests of Building Construction and Materials