

# CertainTeed

## Interior Ceiling Gypsum Board

### Product Data and Submittal

#### Product Description

CertainTeed Interior Ceiling Gypsum Board consists of a solid set, fire-resistive gypsum core enclosed in ivory-colored face paper and a strong liner back paper, for use on interior ceilings where framing is spaced up to 24" (610 mm) o.c. Gypsum core is comprised of special sag-resistant additives. CertainTeed Interior Ceiling Gypsum Board is available in a variety of lengths.

#### Basic Uses

CertainTeed Interior Ceiling Gypsum Board is used for interior ceilings in standard residential and commercial applications. It can be used for new construction or renovations over wood or steel framing. It is typically nailed or screwed perpendicular to framing spaced up to 24" (610 mm) o.c.

#### Advantages

- Resists sagging; supports heavy-textured water-based paints and unsupported insulation. Gypsum core is composed of special sag-resistant additives.
- Creates uniform appearance; standard tapered conventional edges provide smooth, sturdy joints.
- Non-combustible gypsum core increases fire safety.

- Provides excellent paintability, accepting primer and paint absorption.
- Sized same as standard gypsum board 1/2" (12.7 mm) to allow maximum use of leftover pieces, thereby minimizing waste.
- Easy score-and-snap cutting — no sawing or need for special tools.
- Rapid screw or nail attachment.
- Openings can be made where and when required, during or after installation.
- Can be applied with furring and trim common to conventional construction.
- Consistently high quality.
- Uniformly flat, attractive appearance; no shadows.
- No wavy edges, warps, bows or deformities.
- Uniform high-strength cores eliminate crumbling, cracking.

#### Limitations

- Should not be exposed directly to weather. Not recommended for continuous exposure to temperatures exceeding 125°F (52°C).
- Framing spacing should not exceed 24" (610 mm) o.c.
- Boards should be stacked flat with care taken to prevent sagging or damage to edges, ends and surfaces.

- Storing board lengthwise leaning against the framing is not recommended.
- Boards should be carried, not dragged, to place of installation to prevent damaging finished edges.
- Do not use in exterior soffits or exterior ceiling applications.
- In cold weather or during joint finishing, temperatures within the enclosure should stay within the range of 50° to 95°F (10° to 35°C) and with sufficient ventilation to carry off excess moisture.

#### Product Data

**Thickness:** 1/2" (12.7 mm)

**Widths:** 4' (1220 mm) standard

**Lengths:** 8', 12', 14' standard  
(2440, 3660, 4270 mm)

**Weight:** (approx.): 1.8 lb/ft<sup>2</sup> (8.8 kg/m<sup>2</sup>)

**Packaging:** Two pieces per bundle, face-to-face and end-taped

**Core:** Gypsum (noncombustible) with special formulation for premium sag resistance performance.

**Edge:** Tapered, paper bound – factory finished

**End:** Square – factory cut

Continued on back

Job Name

Contractor

Date

Products Specified:

Submittal Approvals  
(Stamps or Signatures)

**CertainTeed**  
SAINT-GOBAIN

Special widths, lengths or edges may be available on special order. Consult your nearest CertainTeed sales representative.

## Technical Data

### Surface Burning Characteristics

All CertainTeed Interior Ceiling Gypsum Board has a Flame Spread rating of 5 and Smoke Developed rating of 0, in accordance with ASTM E84, (UL 723, UBC 8-1, NFPA 255, CAN/ULC-S102).

### Canadian

#### Surface Burning Characteristics

- Flame Spread Rating 9
- Smoke Developed Classification 12

### Applicable Standards and References

- ASTM C1396
- ASTM C1395
- ASTM C840
- CAN/CSA-A82.27
- Gypsum Association GA-214
- Gypsum Association GA-216
- ICC International Building Code (IBC)
- National Building Code of Canada (NBCC)

Note: As per the CCMC (Canadian Construction Materials Centre) Evaluation Report #12349-R, 1/2" (12.7 mm) Interior Ceiling provides sag resistance equal to or better than 5/8" (15.9 mm) gypsum board. CCMC

Report #12349-R allows for the use of 1/2" (12.7 mm) CertainTeed Interior Ceiling in place of 5/8" (15.9 mm) gypsum board on ceilings to receive a water based texture finish, when installed perpendicular to supports spaced up to 24" (610 mm) o.c.

## Installation

### Recommendations

Installation of CertainTeed Interior Ceiling Gypsum Board should be consistent with methods described in the standards and references noted. Cutting should be from the face side of the board for best results. Reduce sagging in new gypsum panel ceilings by controlling the weight of overlaid unsupported insulation at 2.2 psf (10.7 kg/m<sup>2</sup>) with frame spacing at 24" (610 mm) o.c.

Install a separate vapor retarder where required in roofed ceilings, when the plenum or attic space is vented with a minimum of 1/2 square inch (325 mm<sup>2</sup>) net free vent area per square foot of horizontal space. Before installing insulation and vapor retarder, water-based spray texturing materials should be completely dry. Drying usually takes several days.

## Decoration

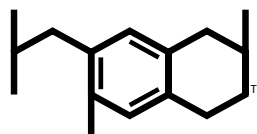
CertainTeed Interior Ceiling Gypsum Board accepts most types of paints. The surface shall be primed and sealed with a full-bodied latex primer before applying a final decorative material. This will equalize the suction between the joint compounds and the paper surface.

For best painting results, all surfaces, including joint compound, should be clean, dust-free and not glossy. If glossy paints are used, a thin skim coat of compound over the entire surface, Level 5 finish, is recommended to reduce highlighting or joint photographing.

Joint treatment must be thoroughly dry before proceeding with primer-sealer application and final decoration.

## Notice

The information in this document is subject to change without notice. CertainTeed assumes no responsibility for any errors that may inadvertently appear in this document.



Health Product  
DECLARATION

The Health Product Declaration™ and logo is owned by the Health Product Declaration Collaborative™ and is used with permission.



## ASK ABOUT ALL OF OUR OTHER CERTAINTEED® PRODUCTS AND SYSTEMS:

ROOFING • SIDING • TRIM • DECKING • RAILING • FENCE  
GYPSUM • CEILINGS • INSULATION

[www.certainteed.com](http://www.certainteed.com) <http://blog.certainteed.com>

CertainTeed Corporation  
20 Moores Road  
Malvern, PA 19355

Professional: 800-233-8990  
Consumer: 800-782-8777