

CertainTeed

NO-COAT

Drywall Corner

Installation Instructions

NO-COAT STICKS

Outside 90

When installing drywall for 90° corners, hang Outside 90 as shown in Figure 1a.

Figure 1a

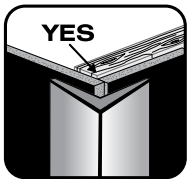
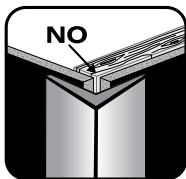


Figure 1b



Bullnose

When installing drywall for Bullnose corners, hang as shown in Figure 2a creating an open area for the radius of the bead. Ensure that drywall at the corners do not touch as shown in Figure 2b.

Figure 2a

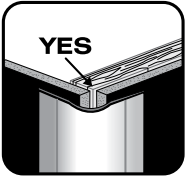
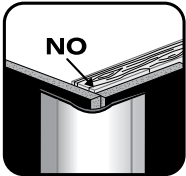
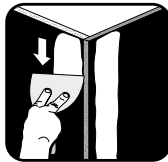


Figure 2b



Made With
SLAM
TECHNOLOGY.

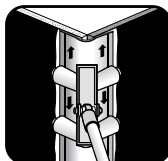
Outside 90 and Bullnose



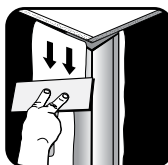
1. Using the taping knife, apply joint compound to drywall, slightly beyond where the edge of the corner will be. Or use hopper to fill bead.



2. Place corner trim on wall, ensuring it is aligned tightly to the ceiling. Press into position.

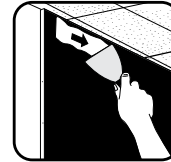


3. Use the roller to embed the trim. Or embed using even pressure, running the knife over it at a 45° angle. Use the taping knife to skim over the edge with joint compound. Let dry thoroughly.

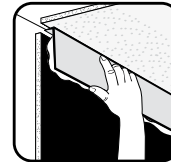


4. Use the wider finishing knife to skim over the edge again. Let dry thoroughly. Lightly sand and paint.

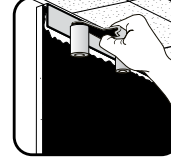
L-Trim



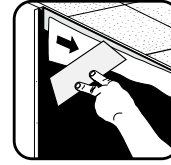
1. Use the taping knife to apply joint compound to drywall, slightly beyond where the L-Trim will be. Or use hopper to fill bead.



2. Place L-Trim on wall. Press into position.



3. Use the roller to embed the trim or embed with a knife, using even pressure running at a 45° angle. Use the taping knife to skim over the L-Trim edge with joint compound. Let dry thoroughly.



4. Use the wider finishing knife to skim over the L-Trim edge again. Let dry thoroughly. Lightly sand and paint.

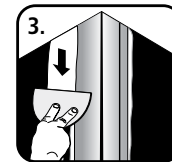
NO-COAT FLEXIBLE CORNERS



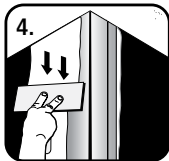
1. Open NO-COAT box and feed product through slot on side of box. Insert hook of tape measure into narrow slot to measure length of NO-COAT needed. Cut to length with scissors.



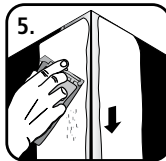
2. With 4"–6" taping knife, apply All-Purpose or Taping drywall compound to corner and press NO-COAT into position.



3. Remove excess mud with the same knife and let dry.



4. Use a 6"–8" finishing knife to skim over edges of corner; let dry.



5. Sand and finish.

800-233-8990 • certainteed.ca • <http://blog.certainteed.com>

ROOFING • SIDING • TRIM • DECKING • RAILING • FENCE
GYPSUM • CEILINGS • INSULATION

CertainTeed
SAINT-GOBAIN