



# QuietRock® 545THX THX CERTIFIED

HIGHER PERFORMANCE, HIGHER RELIABILITY, LOWER COST SOUNDPROOFING SOLUTIONS.

## The world's only THX-certified panel

QuietRock 545THX is the only THX-certified sound damping wall and ceiling panel designed to meet the high-end requirements of commercial theatres, recording studios and home theatres. QuietRock 545THX delivers superior sound isolation within demanding media and privacy environments, even at 50 Hz.

### QuietRock 545THX Benefits

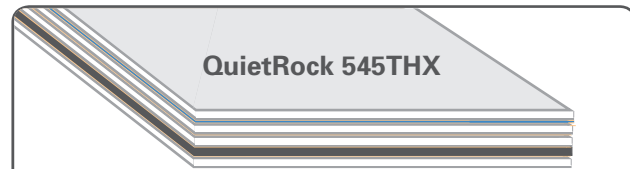
- Highest performing panel in the world
- Delivers STC ratings of 60-80
- Highest total sound loss factor across all frequencies from low to high
- Hangs and finishes like standard drywall
- Outperforms older technologies such as mass loaded vinyl by 60-90%
- Low frequency isolation up to 50dB; high frequency up to 90dB
- Environmentally friendly, lab tested
- Worldwide patents pending

### Product Specifications

<b>Model:</b>	<b>QuietRock 545THX</b>
Thickness:	35 mm (1-3/8")
Weight:	30 kg/m <sup>2</sup> (6.2 lbs/ft <sup>2</sup> )
System STC Range:	60-80
Permeability:	0
RSI value (R value):	0.15 (0.88)

### Product Ordering Codes

1219 mm x 2438 mm (4' x 8') panel: 313177

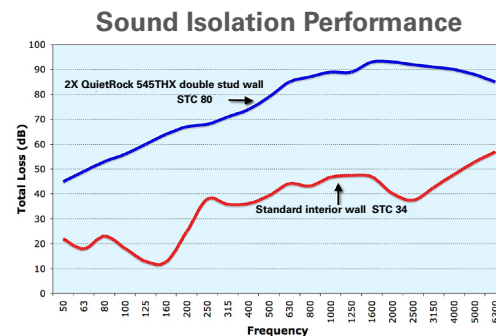


Patent-pending 11-layer ceramic-polymer-gypsum (CPG) composite provides maximum noise reduction.

### STC Comparison\*

15.9 mm (5/8") gypsum	34
152.3 mm (6") CMU	45
Soundboard	46
Mass loaded vinyl	45
<b>QuietRock 545THX</b>	<b>60</b>

\*in standard wood construction, 610 mm (24")



## Applications

- Home theatres
- Commercial theatres
- Recording studios
- Government
- Offices
- Conference rooms

Read and follow complete QuietRock installation instructions, application notes and test reports. Latest version available at [www.QuietRock.com](http://www.QuietRock.com)



Professional: 800-233-8990 • Consumer: 800-782-8777



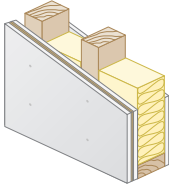


# QuietRock 545THX

HIGHER PERFORMANCE HIGHER RELIABILITY LOWER COST SOUNDPROOFING SOLUTIONS.

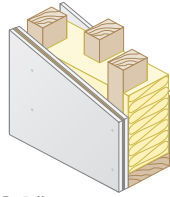
## Lowest-Cost Solutions in the Market

**Lowest Cost Wall**  
QuietRock on one side



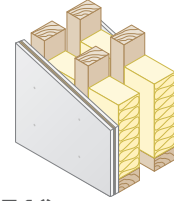
STC: 56\*

**Staggered Stud Wall**  
QuietRock on one side



STC: 64\*

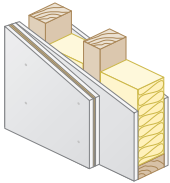
**Double Stud Wall**  
QuietRock on one side



STC: 71\*

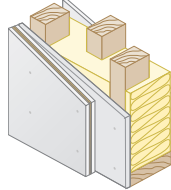
## Retrofit and Remodeling

**Single Stud Wall**  
QuietRock on one side  
of existing drywall



STC: 58\*

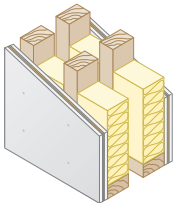
**Staggered Stud Wall**  
QuietRock on one side  
of existing drywall



STC: 66\*

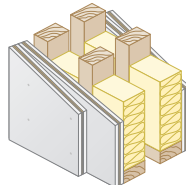
## High Performance

**Double Stud Wall**  
QuietRock on both sides



STC: 75

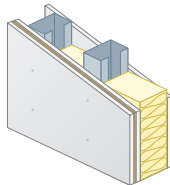
**Double Stud Wall**  
Double layer of QuietRock  
on both sides



STC: 80

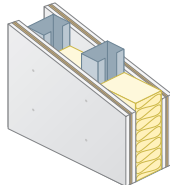
## Steel - Single layer assembly with noise reduction

**Lowest Cost Wall**  
QuietRock on one side



STC: 62\*

**Single Stud Wall**  
QuietRock on both sides



STC: 66\*

\*Estimate

The information contained in this document is for general information purposes only. Features and specifications are subject to change. The diagrams and stated STC ratings listed are intended to serve as a guide. Construction practices have an influence on final STC ratings. Serious Materials cannot guarantee actual STC ratings. Flanking sound patterns, the integrity of the wall, and floor and ceiling construction are important factors in effective sound control.

STCs shown are on 610mm  
(24") wood studs.

Printed in Canada on recycled paper. ♻️ March 2010 CTG-2820



Professional: 800-233-8990 • Consumer: 800-782-8777

