

Acoustic and Fire Assemblies

Product Selection Guide

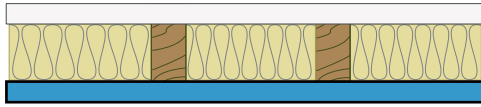


Distributed in Canada by:

SERIOUS ENERGY

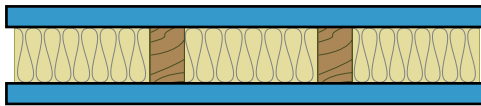
CertainTeed
SAINT-GOBAIN

Single Wood Stud Walls



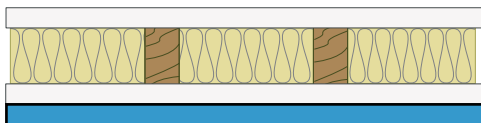
- QuietRock on one side
- 2x4 wood studs spaced 24" OC with 3-1/2" batt insulation
- 5/8" Type X on the other

	Model	STC	STC Report #	Fire	UL/ULC Design #	Panel thickness	Assembly Thickness
EZ-SNAP	ES	51	OL11-0319	UL, 1 hour	U309 ¹	5/8"	4-3/4"
	ES MR	51	OL11-0319	UL, 1 hour	U309 ¹	5/8"	4-3/4"
SPECIALTY	510	49	TL07-021	-	-	1/2"	4-5/8"
	530	52	TLA-04-050 ²	UL, 1 hour	U309 ¹ , U376 ¹ , U386, W313 ¹ , W317	5/8"	4-3/4"
	545	56	est.	-	-	1-3/8"	5-1/2"



- QuietRock on both sides
- 2x4 wood studs spaced 24" OC with 3-1/2" batt insulation

	Model	STC	STC Report #	Fire	UL/ULC Design #	Panel thickness	Assembly Thickness
EZ-SNAP	ES	54	OL11-0320	UL, 1 hour	U309 ¹	5/8"	4-3/4"
	ES MR	54	OL11-0320	UL, 1 hour	U309 ¹	5/8"	4-3/4"
SPECIALTY	510	52	TL07-022	-	-	1/2"	4-1/2"
	530	54	TLA-04-036	UL, 1 hour	U376 ¹ , W313 ¹	5/8"	4-3/4"
	545	60	TLA-05-048	-	-	1-3/8"	6-1/4"



- QuietRock over 5/8" Type X on one side
- 2x4 wood studs spaced 24" OC with 3-1/2" batt insulation
- 5/8" Type X on the other

	Model	STC	STC Report #	Fire	UL/ULC Design #	Panel thickness	Assembly Thickness
EZ-SNAP	ES	49	est.	UL, 1 hour	U309 ¹	5/8"	5-3/8"
	ES MR	49	est.	UL, 1 hour	U309 ¹	5/8"	5-3/8"
SPECIALTY	510	47	TL06-133	UL, 1 hour	U309 ¹	1/2"	5"
	530	53	TLA-04-051 ²	UL, 1 hour	U309 ¹ , U376 ¹ , U386, W313 ¹ , W317	5/8"	5-3/8"
	545	58	est.	1 hour	-	1-3/8"	6-1/8"

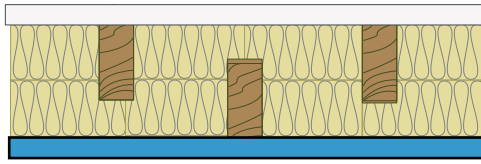
¹ Load bearing wall assembly. *STC ratings for QuietRock 510 on retrofit wood stud construction are given on 1/2" gypsum panels.
²5/8" Type C gypsum used instead of Type X

QuietRock sound damping drywall and other acoustical products available from Serious Energy. Visit www.QuietRock.com for more information.

All QuietRock and QuietWood panels are manufactured under one or more of the following US Patents: 7,181,891, 7,798,287 & 7,883,763.

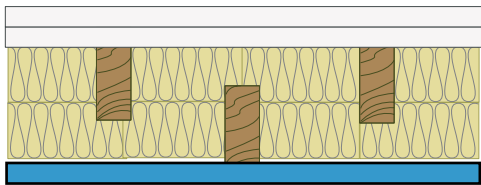
The information contained in this document is for general information purposes only. Features and specifications are subject to change. The diagrams and stated STC ratings listed are intended to serve as a guide. Construction practices have an influence on final STC ratings. Serious Energy cannot guarantee actual STC ratings. Flanking sound patterns, the integrity of the wall, and floor and ceiling construction are important factors in effective sound control.

Staggered Wood Stud Walls



- QuietRock on one side
- 2x4 wood studs spaced 8" OC on 6" plates with 6" minimum batt insulation
- 5/8" Type X on the other

	Model	STC	STC Report #	Fire	UL/ULC Design #	Panel thickness	Assembly Thickness
EZ-SNAP	ES	55	TL10-120	UL, 1 hour	U3401, U3761, U386, W3131, W317	5/8"	6-3/4"
	ES MR	55	TL10-120	UL, 1 hour	U3401, U3761, U386, W3131, W317	5/8"	6-3/4"
SPECIALTY	510	54	est.	-	-	1/2"	6-5/8"
	530	57	est.	UL, 1 hour	U3401, U3761, U386, W3131, W317	5/8"	6-3/4"
	545	64	est.	-	-	1-3/8"	7-1/2"



- QuietRock on one side
- 2x4 wood studs spaced 8" OC on 6" plates with 3-1/2" minimum batt insulation
- 2 layers 5/8" Type X on the other

	Model	STC	STC Report #	Fire	UL/ULC Design #	Panel thickness	Assembly Thickness
EZ-SNAP	ES	60	TL10-121	UL, 1 hour	U3901, U3761, U5861, W3131, W317	5/8"	7-3/8"
	ES MR	60	TL10-121	UL, 1 hour	U3901, U3761, U5861, W3131, W317	5/8"	7-3/8"
SPECIALTY	510	58	est.	-	-	1/2"	7-1/4"
	530	59	est.	UL, 1 hour	U3401, U3761, W3131	5/8"	7-3/8"
	545	67	est.	-	-	1-3/8"	8-1/8"

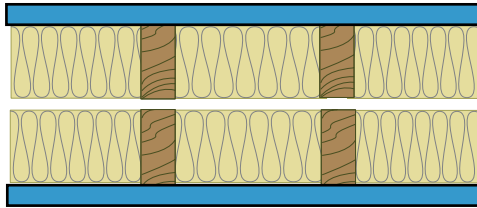
¹ Load bearing wall assembly.

QuietRock sound damping drywall and other acoustical products available from Serious Energy. Visit www.QuietRock.com for more information.

All QuietRock and QuietWood panels are manufactured under one or more of the following US Patents: 7,181,891, 7,798,287 & 7,883,763.

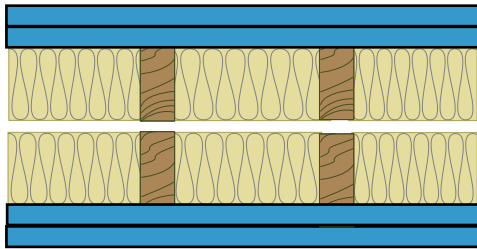
The information contained in this document is for general information purposes only. Features and specifications are subject to change. The diagrams and stated STC ratings listed are intended to serve as a guide. Construction practices have an influence on final STC ratings. Serious Energy cannot guarantee actual STC ratings. Flanking sound patterns, the integrity of the wall, and floor and ceiling construction are important factors in effective sound control.

Double Wood Stud Walls



- QuietRock on both sides
- 2x4 wood studs spaced 24" OC, 3" min. air gap with 9-1/2" batt insulation

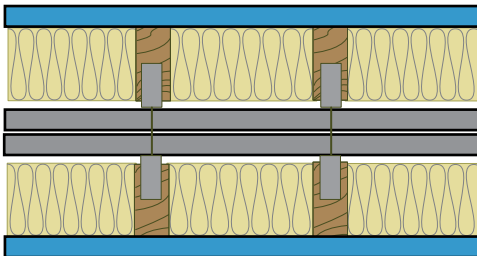
	Model	STC	STC Report #	Fire	UL/ULC Design #	Panel thickness	Assembly Thickness
EZ-SNAP	ES	65	est.	UL, 1 hour	U3411, U3761, W3131	5/8"	11-1/4"
	ES MR	65	est.	UL, 1 hour	U3411, U3761, W3131	5/8"	11-1/4"
SPECIALTY	510	63	est.	-	-	1/2"	11"
	530	66	TLA-04-033	UL, 1 hour	U3411, U3761, W3131	5/8"	11-1/4"
	545	75	TLA-05-040	-	-	1-3/8"	12-3/4"



- Double layer QuietRock on both sides
- 2x4 wood studs spaced 24" OC, 3" min. air gap with 9-1/2" batt insulation

	Model	STC	STC Report #	Fire	UL/ULC Design #	Panel thickness	Assembly Thickness
EZ-SNAP	ES	73	est.	UL, 1 hour	U3411, U3761, W3131	5/8"	12-1/2"
	ES MR	73	est.	UL, 1 hour	U3411, U3761, W3131	5/8"	11-1/4"
SPECIALTY	510	71	est.	-	-	1/2"	12"
	530	74	TLA-04-034	UL, 1 hour	U3411, U3761, W3131	5/8"	12-1/2"
	545	80	TLA-05-043	-	-	1-3/8"	15-1/2"

Two Hour Separation Wall



- One layer of QuietRock on both outer walls
- 1" fire-shield shaft liner material both sides
- Double 2x4 wood studs spaced 16" OC with 3-1/2" batt insulation on both sides

	Model	STC	STC Report #	Fire	UL/ULC Design #	Panel thickness	Assembly Thickness
SPECIALTY	510	69	TL07-119	UL, 2 hours	U3471	1/2"	11-1/2"

¹Load bearing wall assembly.

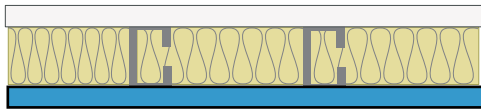
²Tested with double 2x4 wood studs 16" OC, a 3" air gap, and 3-1/2" batt insulation on both sides.

QuietRock sound damping drywall and other acoustical products available from Serious Energy. Visit www.QuietRock.com for more information.

All QuietRock and QuietWood panels are manufactured under one or more of the following US Patents: 7,181,891, 7,798,287 & 7,883,763.

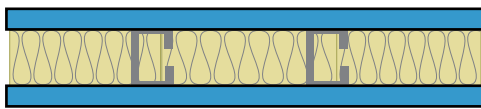
The information contained in this document is for general information purposes only. Features and specifications are subject to change. The diagrams and stated STC ratings listed are intended to serve as a guide. Construction practices have an influence on final STC ratings. Serious Energy cannot guarantee actual STC ratings. Flanking sound patterns, the integrity of the wall, and floor and ceiling construction are important factors in effective sound control.

3-5/8" 25 Gauge Single Steel Stud Walls 24" OC



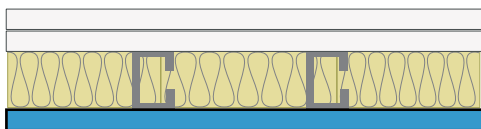
- QuietRock on one side
- 3-1/2" batt insulation
- 5/8" Type X on the other

	Model	STC	STC Report #	Fire	UL/ULC Design #	Panel thickness	Assembly Thickness
EZ-SNAP	ES	55	OL11-0333	UL, 1 hour	U465	5/8"	4-7/8"
	ES MR	55	OL11-0333	UL, 1 hour	U465	5/8"	4-7/8"
SPECIALTY	510	51	est.	-	-	1/2"	4-5/8"
	530	53	est.	UL, 1 hour	W460, V463, W459, V464	5/8"	4-7/8"
	545	62	est.	-	-	1-3/8"	5-5/8"



- QuietRock on both side
- 3-1/2" batt insulation

	Model	STC	STC Report #	Fire	UL/ULC Design #	Panel thickness	Assembly Thickness
EZ-SNAP	ES	57	OL11-0329	UL, 1 hour	U465	5/8"	4-7/8"
	ES MR	57	OL11-0329	UL, 1 hour	U465	5/8"	4-7/8"
SPECIALTY	510	55	est.	-	-	1/2"	4-5/8"
	530	55	TLA-05-050	UL, 1 hour	W460, V463, W459, V464	5/8"	4-7/8"
	545	67	est.	-	-	1-3/8"	6-3/8"



- QuietRock on one side
- 3-1/2" batt insulation
- 2 layers 5/8" Type X on the other

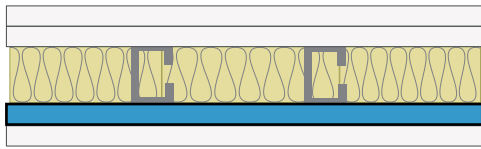
	Model	STC	STC Report #	Fire	UL/ULC Design #	Panel thickness	Assembly Thickness
EZ-SNAP	ES	60	OL11-0334	UL, 1 hour	U465, V463, V464, W459, W460	5/8"	5-1/2"
	ES MR	60	OL11-0334	UL, 1 hour	U465	5/8"	4-7/8"
SPECIALTY	510	54	est.	-	-	1/2"	5-3/8"
	530	58	est.	UL, 1 hour	V463, V464, W459, W460	5/8"	5-1/2"
	545	65	est.	-	-	1-3/8"	6-1/4"

QuietRock sound damping drywall and other acoustical products available from Serious Energy. Visit www.QuietRock.com for more information.

All QuietRock and QuietWood panels are manufactured under one or more of the following US Patents: 7,181,891, 7,798,287 & 7,883,763.

The information contained in this document is for general information purposes only. Features and specifications are subject to change. The diagrams and stated STC ratings listed are intended to serve as a guide. Construction practices have an influence on final STC ratings. Serious Energy cannot guarantee actual STC ratings. Flanking sound patterns, the integrity of the wall, and floor and ceiling construction are important factors in effective sound control.

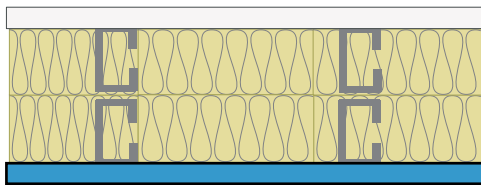
3-5/8" 25 Gauge Single Steel Stud Walls 24" OC



- 5/8" Type X over QuietRock on one side
- 3-1/2" batt insulation
- 2 layers 5/8" Type X on the other

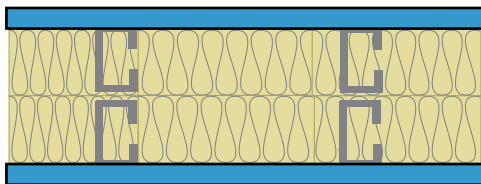
	Model	STC	STC Report #	Fire	UL/ULC Design #	Panel thickness	Assembly Thickness
EZ-SNAP	ES	62	est.	UL, 1 or 2 hour	U465, V419, V463, V464, W459, W460	5/8"	6-1/8"
	ES MR	62	est.	UL, 1 or 2 hour	U465, V419, V463, V464, W459, W460	5/8"	6-1/8"
SPECIALTY	510	56	TL07-031	UL, 1 hour	U465, U473	1/2"	6"
	530	60	est.	UL, 1 hour	V463, V464, W459, W460	5/8"	6-1/8"
	545	67	est.	1 hour	-	1-3/8"	6-7/8"

3-5/8" 25 Gauge Double Steel Stud Walls 24" OC



- QuietRock on one side
- 1" min air gap with 3-1/2" batt insulation on both sides
- 5/8" Type X on the other

	Model	STC	STC Report #	Fire	UL/ULC Design #	Panel thickness	Assembly Thickness
EZ-SNAP	ES	64	est.	UL, 1 hour	V463, V464, W459, W460	5/8"	9-1/4"
	ES MR	64	est.	UL, 1 hour	V463, V464, W459, W460	5/8"	9-1/4"
SPECIALTY	510	62	est.	-	-	1/2"	9"
	530	64	est.	UL, 1 hour	V463, V464, W459, W460	5/8"	9-1/4"
	545	70	est.	-	-	1-3/8"	10"



- QuietRock on both sides
- 1" min air gap with 3-1/2" batt insulation both sides

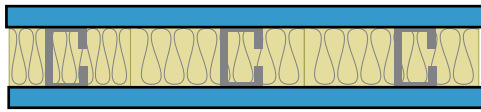
	Model	STC	STC Report #	Fire	UL/ULC Design #	Panel thickness	Assembly Thickness
EZ-SNAP	ES	65	est.	UL, 1 hour	V463, V464, W459, W460	5/8"	9-1/4"
	ES MR	65	est.	UL, 1 hour	V463, V464, W459, W460	5/8"	9-1/4"
SPECIALTY	510	63	est.	-	-	1/2"	9"
	530	65	est.	UL, 1 hour	V463, V464, W459, W460	5/8"	9-1/4"
	545	74	est.	-	-	1-3/8"	10-3/4"

QuietRock sound damping drywall and other acoustical products available from Serious Energy. Visit www.QuietRock.com for more information.

All QuietRock and QuietWood panels are manufactured under one or more of the following US Patents: 7,181,891, 7,798,287 & 7,883,763.

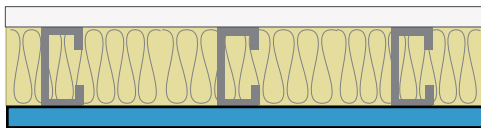
The information contained in this document is for general information purposes only. Features and specifications are subject to change. The diagrams and stated STC ratings listed are intended to serve as a guide. Construction practices have an influence on final STC ratings. Serious Energy cannot guarantee actual STC ratings. Flanking sound patterns, the integrity of the wall, and floor and ceiling construction are important factors in effective sound control.

Heavy-Gauge Single Steel Stud Wall 16" OC



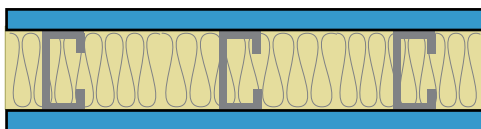
- QuietRock on both sides
- 3-5/8" 16-ga. steel studs spaced 16" OC with 3-1/2" batt insulation

	Model	STC	STC Report #	Fire	UL/ULC Design #	Panel thickness	Assembly Thickness
EZ-SNAP	ES	48	TL10-394	UL, 1 hour	U4251, U465, V463, V464, W459, W460	5/8"	4-7/8"
	ES MR	48	TL10-394	UL, 1 hour	U4251, U465, V463, V464, W459, W460	5/8"	4-7/8"
SPECIALTY	510	44	est.	-	-	1/2"	4-5/8"
	530	48	est.	UL, 1 hour	V463, V464, W459, W460	5/8"	4-7/8"
	545	55	est.	-	-	1-3/8"	5-5/8"



- QuietRock on one side
- 6" 16-ga. steel studs spaced 16" OC with 6" batt insulation
- 5/8" Type X on the other

	Model	STC	STC Report #	Fire	UL/ULC Design #	Panel thickness	Assembly Thickness
EZ-SNAP	ES	49	TL10-398	UL, 1 hour	U4251, U465, V463, V464, W459, W460	5/8"	7-1/4"
	ES MR	49	TL10-398	UL, 1 hour	U4251, U465, V463, V464, W459, W460	5/8"	7-1/4"
SPECIALTY	510	45	est.	-	-	1/2"	7-1/8"
	530	49	est.	UL, 1 hour	V463, V464, W459, W460	5/8"	7-1/4"
	545	56	est.	-	-	1-3/8"	8"



- QuietRock on both sides
- 6" 16-ga. steel studs spaced 16" OC with 6" batt insulation

	Model	STC	STC Report #	Fire	UL/ULC Design #	Panel thickness	Assembly Thickness
EZ-SNAP	ES	53	TL10-399	UL, 1 hour	U4251, U465, V463, V464, W459, W460	5/8"	7-1/4"
	ES MR	53	TL10-399	UL, 1 hour	U4251, U465, V463, V464, W459, W460	5/8"	7-1/4"
SPECIALTY	510	49	est.	-	-	1/2"	7"
	530	53	est.	UL, 1 hour	V463, V464, W459, W460	5/8"	7-1/4"
	545	60	est.	-	-	1-3/8"	8-3/4"

¹Load bearing wall assembly.

QuietRock sound damping drywall and other acoustical products available from Serious Energy. Visit www.QuietRock.com for more information.

All QuietRock and QuietWood panels are manufactured under one or more of the following US Patents: 7,181,891, 7,798,287 & 7,883,763.

The information contained in this document is for general information purposes only. Features and specifications are subject to change. The diagrams and stated STC ratings listed are intended to serve as a guide. Construction practices have an influence on final STC ratings. Serious Energy cannot guarantee actual STC ratings. Flanking sound patterns, the integrity of the wall, and floor and ceiling construction are important factors in effective sound control.

The information contained in this document is for general information purposes only. Features and specifications are subject to change. The diagrams and stated STC ratings listed are intended to serve as a guide. Construction practices have an influence on final STC ratings. Serious Energy cannot guarantee actual STC ratings. Flanking sound patterns, the integrity of the wall, and floor and ceiling construction are important factors in effective sound control.