

CertainTeed

Sheathing Treated Core

Regular and Type X Gypsum Board

Product Data and Submittal

Product Description

CertainTeed Sheathing Treated Core is a water-repellent gypsum sheathing for application to the outside of building framing members, and serves as the base for the exterior wall finish.

CertainTeed Sheathing Treated Core Type X provides the same base as CertainTeed Sheathing, plus it has a specially formulated core for use in fire resistance-rated designs. Both products consist of a solid set, gypsum core covered with durable water-resistant backing and face paper. CertainTeed Sheathing and CertainTeed Sheathing Type X are available in a variety of lengths.

Basic Uses

CertainTeed Sheathing and CertainTeed Sheathing Type X are used as attachments to the outside of exterior wall framing as a water-resistant underlayment for various siding materials. CertainTeed Sheathing and CertainTeed Sheathing Type X can be used as a sheathing for wood-framed residential construction to provide fire resistance, weather protection and to add structural strength when used under exterior finishes. They can also serve as sheathing for steel stud commercial construction and as a component in curtainwall and exterior insulation and

finish systems. CertainTeed Sheathing Type X can be used in fire-rated exterior wall assemblies.

Advantages

- Low material and application costs.
- Moisture-resistant core and water-repellent surfaces provide a barrier that resists passage of wind and water.
- Non-combustible gypsum core protects framing elements, even when siding or finish material is combustible.
- Can be scored and snapped to exact size without cutting or sawing.
- Consistently high quality.
- High edge hardness.
- No wavy edges, warps, bows or deformities.

Limitations

- CertainTeed Sheathing is not a finished surface, nor is it a substrate for the direct application of stucco, paint or textures.
- Framing spacing should not exceed 24" (610 mm) o.c.
- CertainTeed Sheathing should not be used as a nailing base.
- CertainTeed Sheathing application to framing by adhesive only is not recommended.

- Boards should be stacked flat with care taken to prevent sagging or damage to edges, ends and surfaces.
- CertainTeed Sheathing is not recommended for application to exterior ceilings, soffits or sills.
- CertainTeed Sheathing should be spaced not less than 1/4" from abutting masonry to minimize wicking.
- Storing outside for up to one month is acceptable if stacked off the ground and under protective cover.
- CertainTeed Sheathing and CertainTeed Sheathing Type X are designed for use as a substrate to be covered by an exterior cladding or other weather barrier, and are not intended for long-term exposure. Treated Core sheathing may be left exposed for up to one month after application.

Composition and Materials

CertainTeed Sheathing and CertainTeed Sheathing Type X are manufactured panels with gypsum cores, covered with durable, water-resistant face and backing paper. Available with a water-resistant treated core or a nontreated core. CertainTeed Sheathing Type X also contains various additives to enhance the fire-resistive qualities.

Continued on back

Job Name

Contractor

Date

Products Specified:

Submittal Approvals
(Stamps or Signatures)

CertainTeed
SAINT-GOBAIN

Product Data

Thicknesses: 1/2" (12.7 mm)
5/8" (15.9 mm) Type X

Widths: 4' (1220 mm) standard

Lengths: 1/2" - 8', 9', standard
(2440, 2745, mm)

5/8" - 8', to 12', standard
(2440 to 3660 mm)

Weight: 1/2" (12.7 mm) Sheathing
Treated Core 1.65 lb/ft² (8.0 kg/m²)

5/8" (15.9 mm) Sheathing Treated Core
Type X – 2.25 lb/ft² (11.0 kg/m²)

Core: Sheathing Treated Core – gypsum
(noncombustible) with moisture
resistant core.

Sheathing Treated Core Type X – gypsum
(noncombustible) with moisture resistant
core and proprietary formulation for fire
resistance performance.

Edges: Square

End: Square – factory cut

Packaging: Two pieces per bundle,
face-to-face and end-taped.

Special widths, lengths or edges may be
available on special order. Consult your
CertainTeed sales representative.

Technical Data

Surface Burning Characteristics

All CertainTeed Sheathing has a Flame
Spread rating of 15 and Smoke
Developed rating of 0, in accordance with
ASTM E84. (UL 723, UBC 8-1, NFPA 255,
CAN/ULC-S102)

Fire Resistance

Fire resistance tests are conducted in
accordance with ASTM E119,
(ANSI/UL 263, UBC 7-1, NFPA 251,
CAN/ULC-S101) and no warranty is made
other than conformance to the standard
under which the assembly was tested.
Minor discrepancies may exist in the
values of ratings, attributable to changes
in materials and standards, as well as
differences between testing facilities.
Assemblies are listed as "combustible"
(wood framing) and "noncombustible"
(concrete and/or steel construction).
For fire resistance ratings, refer to the
Gypsum Association Fire Resistance
Design Manual and UL Fire Resistance
Directory - Vol. 1.

Applicable Standards and References

- ASTM C1396
- ASTM C79
- ASTM C1280
- CAN/CSA-A82.27
- Gypsum Association GA-253 and
GA-254
- CAN/CSA-A82.31 Gypsum Board
Application
- ICC International Building Code (IBC)
- National Building Code of Canada
(NBCC)

Installation

Recommendations

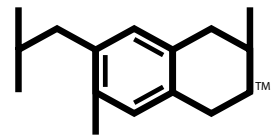
Installation of CertainTeed Sheathing and
CertainTeed Sheathing Type X should be
consistent with methods described in the
standards and references noted.

Fasteners should bear tightly against the
face of the sheathing, but should not cut
into the face paper. Staples should be
driven with the crown parallel to the
framing. Fasteners should be no less
than 3/8" (9.3 mm) from the edges and
ends of the sheathing.

Apply vertically with vertical edges
butting over the center of framing
members. Fit sheathing snugly around all
openings. Attach sheathing with nails or
screws spaced not over 4" (101.6 mm)
o.c. around perimeter and 8" (203.2 mm)
to intermediate studs (space staples not
over 3" (76.2 mm) and 6" (152.4 mm) o.c.
respectively). Horizontally-applied square
edge gypsum sheathing shall be covered
with building felt or equivalent, or
horizontal joints shall be sealed.

Notice

The information in this document is
subject to change without notice.
CertainTeed assumes no responsibility
for any errors that may inadvertently
appear in this document.



Health Product DECLARATION

The Health Product Declaration™ and
logo is owned by the Health Product
Declaration Collaborative™ and is
used with permission.



ASK ABOUT ALL OF OUR OTHER CERTAINTEED® PRODUCTS AND SYSTEMS:

ROOFING • SIDING • TRIM • DECKING • RAILING • FENCE
GYPSUM • CEILINGS • INSULATION

www.certainteed.com <http://blog.certainteed.com>

CertainTeed Corporation
20 Moores Road
Malvern, PA 19355

Professional: 800-233-8990
Consumer: 800-782-8777

© 1-2007 CertainTeed Gypsum, Inc. Rev 01-2016
Printed in U.S.A. on recycled paper. CTG-2338/2M