

# CertainTeed

# **EXTREME ABUSE**

## Abuse Resistant Gypsum Board

### Product Data and Submittal

#### Product Description

Extreme Abuse Resistant Gypsum Board with M2Tech® is for use in interior wall and ceiling applications that require improved durability and enhanced moisture and mold resistance. Extreme Abuse contains a specially formulated, dense, fire resistive, noncombustible, moisture resistant core reinforced by glass fibre and enclosed in a 100% recycled moisture and mold resistant face and back paper. This combination affords greater resistance to abuse and sound transmission in high traffic areas than does standard gypsum board. The Extreme Abuse Resistant Gypsum Board is also made with proprietary M2Tech® technology which improves indoor air quality by providing enhanced moisture and mold resistance. Joint finishing is accomplished by using normal drywall finishing techniques according to GA-214 Levels of Gypsum Board Finish. Once primed, walls may be painted, wallpapered or textured for the desired look.

#### Basic Uses

Extreme Abuse is used for interior walls and ceilings in residential, commercial or institutional applications where improved surface abrasion and indentation is required. It can be used for new construction or renovations over wood or steel framing.

#### For Use In Abuse Prone Areas

Extreme Abuse provides the increased protection and durability required for abuse prone areas that are subjected

to repeated wear and tear, such as classrooms, patient rooms and public buildings.

#### Advantages

- Greater resistance to abuse than standard gypsum board.
- Lightweight, fast installation with smaller footprint versus concrete masonry units.
- M2Tech® technology provides additional zone of protection against moisture and mold.
- Achieves best possible score of 10 for mold resistance per ASTM D3273\*\*\*.
- Achieves best possible score of 0 for mold resistance per ASTM G21\*\*\*.
- Handles like standard gypsum board.
- Low water absorption—less than 5% per ASTM C473.
- Type X fire-resistant gypsum core.
- GREENGUARD Gold Certified.
- Improved sound attenuation over standard gypsum board.

#### Limitations

- Where 5/8" (15.9 mm) Type C is specified to attain a fire resistance rating, Extreme Abuse cannot be substituted.
- Maximum framing spacing as per the ICC International Building Codes and National Building Code of Canada recommended application standards and design listings.
- To achieve the product's designed abuse ratings and to eliminate potential installation issues such as screw spin-out on lighter gauge studs, minimum of 20 gauge studs (0.0312 in. [0.792 mm] design thickness) must be used.

- Avoid exposure to water or excessive moisture during transportation, storage, handling, during or after installation. Good design and construction practices that prevent water and moisture exposure of building products are the most effective strategy to avoid the growth of mold.
- Not recommended for exterior application.
- Extreme Abuse is not recommended for areas which will be continuously wet or subjected to high humidity such as tub and shower enclosures behind tile, saunas, steam rooms or public showers.
- Not recommended for continuous exposure to temperatures exceeding 125° F (52° C).
- Store indoors and off ground surface. Boards should be stacked flat with care taken to prevent sagging or damage to edges, ends and surfaces.
- Storing board lengthwise leaning against the framing is not recommended.
- Boards should be carried, not dragged, to place of installation to prevent damaging finished edges.
- Cutting and scoring should be done from the face side.
- In cold weather or during joint finishing temperatures within the enclosure should stay within the range of 50° to 95° F (10° to 35° C) and with sufficient ventilation to carry off excess moisture.

Continued on back

Job Name

---

Contractor

Date

---

Products Specified:

---

Submittal Approvals  
(Stamps or Signatures)

**CertainTeed**  
SAINT-GOBAIN

## Product Data

**Thicknesses:** 5/8" (15.9 mm) Type X

**Widths:** 4' (1220 mm)

**Lengths:** 8', 10', 12' Standard  
(2440, 3050, 3660 mm)

**Weight:** 2.8 lbs per SF (13.7 kg/m<sup>2</sup>)

**Edges:** Tapered

**Packaging:** Two pieces per bundle,  
face-to-face

## Technical Data

### Surface Burning Characteristics

Extreme Abuse has a Flame Spread rating of 15 and Smoke Developed rating of 0 when tested in accordance with ASTM E84, (UL 723, NFPA 255) and a Flame Spread rating of 5 and Smoke Developed rating of 5 when tested in accordance with CAN/ULC-S102.

### Fire Resistance

Extreme Abuse Resistant Gypsum Board is UL Classified and ULC Listed for Fire Resistance in accordance with ASTM E119 (UL 263, NFPA 251, CAN/ULC-S101) and may be substituted for CertainTeed and M2Tech® Type X Gypsum Board in UL/ULC fire-rated designs.

**UL/ULC Type Designation:** Type X

## Applicable Standards and References

- ASTM C840; C1396; C1629
- CAN/CSA-A82.27; A82.31
- Gypsum Association GA-216
- Gypsum Association GA-214
- ICC International Building Code (IBC)
- ICC International Residential Code (IRC)
- National Building Code of Canada (NBCC)

## Installation

### Decoration

CertainTeed Extreme Abuse accepts water based acrylic (latex) and epoxy paints, primers, textures and breathable wallpapers. The surface shall be primed and sealed with a full-bodied latex primer before applying a final decorative material. This will equalize the suction between the joint compounds and the paper surface. For best painting results, all surfaces, including joint compound, should be clean, dust-free and not glossy. If glossy paints are used, a thin skim coat of compound over the entire surface, Level 5 finish, is recommended to reduce highlighting or joint photographing. This method is also recommended for areas of critical sidelighting of natural or artificial light sources.

A water based primer/sealer application under breathable wallpaper or other wall covering is also recommended so the board surface will not be damaged, if the covering is subsequently removed during redecorating.

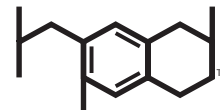
Joint treatment must be thoroughly dry before proceeding with primer-sealer application and final decoration.

## Notice

The information in this document is subject to change without notice. CertainTeed assumes no responsibility for any errors that may inadvertently appear in this document.

## Abuse Resistance Classification Levels

ASTM C1629	Surface Abrasion	Indentation Resistance	Soft Body Impact	Hard Body Impact
ASTM Test Method	D4977	D5420	E695	C1629, A.1
Classification Level	3	1	2	1



**Health Product  
DECLARATION**

The Health Product Declaration™ and logo is owned by the Health Product Declaration Collaborative™ and is used with permission.



### CertainTeed Corporation

ROOFING • SIDING • TRIM • DECKING • RAILING • FENCE • GYPSUM • CEILINGS • INSULATION

20 Moores Road Malvern, Pa 19355 Professional: 800-233-8990 Consumer: 800-782-8777 [certainteed.com](http://certainteed.com)