

CertainTeed



Noise-Reducing Gypsum Board

Product Data and Submittal

Product Description

SilentFX®, featuring Green Glue® and M2Tech® technology, is a noise-reducing gypsum board available in 1/2" regular and 5/8" Type X. SilentFX is specifically designed for systems requiring high STC ratings where acoustic management is needed. Green Glue is a viscoelastic polymer that dampens sound energy and significantly improves sound attenuation through walls and ceilings. This improved performance helps achieve high STC ratings with fewer layers of gypsum board than traditional assemblies, freeing up valuable square footage and reducing material usage and labor.

SilentFX Type X gypsum board contains Green Glue applied between two specially formulated gypsum boards with a dense, fire resistive type X gypsum core, enclosed in a 100% recycled moisture and mold resistant face and back paper. As a result of the inclusion of M2Tech technology, SilentFX also contributes to indoor air quality by providing enhanced moisture and mold resistance.

Basic Uses

1/2" SilentFX Gypsum Board is intended for use on interior walls in residential, commercial or institutional applications. 5/8" SilentFX Type X Gypsum Board is intended for use on interior walls and

ceilings in residential, commercial or institutional applications. They can be used for new construction or renovations over wood or steel framing. It is typically nailed or screwed to studs spaced 16" (400 mm) or 24" (610 mm) o.c.

Advantages

- Features Green Glue viscoelastic polymer for superior noise damping.
- SilentFX systems improve sound attenuation with STC ratings of 50 and higher.
- High STC ratings with fewer layers of gypsum board than traditional assemblies.
- Abuse resistant per ASTM C1629.
- Low VOC emitting materials - GREENGUARD Children and SchoolsSM Certified.
- M2Tech technology provides additional zone of protection against moisture and mold.
- Achieves best possible score of 10 for mold resistance per ASTM D3273*.
- Finishes like regular gypsum board.
- Regular and Type X products available.

Limitations

- Avoid exposure to water or excessive moisture during transportation, storage, handling, during or after installation. Good design and construction practices that prevent water and moisture exposure of building products are

the most effective strategy to avoid the growth of mold.

- 1/2" (12.7 mm) SilentFX is not recommended for ceiling applications.
- Not recommended for exterior application.
- SilentFX Gypsum Boards are not recommended for areas which will be continuously wet or subjected to high humidity such as tub and shower enclosures behind tile, saunas, steam rooms or gang showers.
- Not recommended for continuous exposure to temperatures exceeding 125°F (52°C).
- Ceiling framing spacing should not exceed 16" (400 mm) o.c. for parallel or 24" (610 mm) o.c. for perpendicular application of 5/8" SilentFX Type X Gypsum Board.
- Wall framing spacing should not exceed 24" (610 mm) o.c.
- Store indoors and off ground surface. Boards should be stacked flat with care taken to prevent sagging or damage to edges, ends and surfaces.
- Storing board lengthwise leaning against the framing is not recommended.
- Boards should be carried, not dragged, to place of installation to prevent damaging finished edges.
- SilentFX boards are cut by deeply scoring from both sides and snapping, or the use of hand or power saw.

Continued on back

Job Name

Contractor

Date

Products Specified:

Submittal Approvals
(Stamps or Signatures)

CertainTeed
SAINT-GOBAIN

- Cutting across 4' (1220 mm) width may require use of hand or power saw.
- In cold weather or during joint finishing applications, temperatures within the enclosure should stay in the range of 50° to 95°F (10° to 35°C) with sufficient ventilation to carry off excess moisture.

Sizes and Types

Thicknesses:

Nominal 1/2" (12.7 mm)

5/8" (15.9 mm) Type X

Weights:

1/2" (12.7 mm) 2.3 psf (11.2 kg/m²)

5/8" (15.9 mm) 2.8 psf (13.7 kg/m²)

Widths: 4' (1220 mm)

Lengths: 8' (2440 mm)

Custom lengths available upon request.

Contact the nearest Sales Office for stocked lengths available.

Edges: Tapered

Packaging: Product is not bundled

Product Standards:

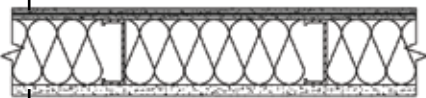
ASTM C1396

ASTM C1629

Technical Data

Acoustic Performance

SilentFX® 5/8" Type X



CertainTeed 5/8" Type X

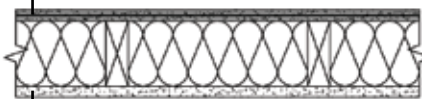
Thicknesses: 4 7/8"

Fire Resistance Based Upon:

UL Design U465

Sound Test: STC 57

SilentFX 5/8" Type X



CertainTeed 5/8" Type X

Thicknesses: 5 1/4"

Fire Resistance Based Upon:

UL Design U309

Sound Test: STC 51

Fire Resistance

5/8" SilentFX Type X Gypsum Board is UL Classified for Fire Resistance in accordance with ASTM E119 (UL 263, NFPA 251) and may be substituted for CertainTeed Type X and M2Tech Type X Gypsum Board in UL fire-rated designs.

Surface Burning Characteristics

SilentFX Gypsum Boards have a Flame Spread rating of 5 and Smoke Developed rating of 5 when tested in accordance with ASTM E84, (UL 723, NFPA 255).

Abuse Resistance

ASTM C1629 Test	Method	Classification Level
Surface Abrasion	D4977	1
Indentation Resistance	D5420	1
Soft Body impact	E695	1

Applicable Standards and References

- ASTM E90
- ASTM C840
- Gypsum Association GA-216
- Gypsum Association GA-214
- ICC International Building Code (IBC)
- ICC International Residential Code (IRC)

Installation

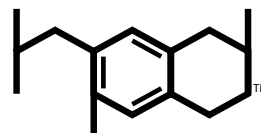
Decoration

SilentFX Gypsum Board may be finished, painted, or wallpapered using conventional gypsum board techniques. The Gypsum Association publication, GA-214, "Recommended Levels of Gypsum Board Finish" should be referenced when specifying the level of finishing required for the desired final decoration.

- * The performance of SilentFX Gypsum Boards in actual use may not accurately reproduce the results achieved in this ASTM laboratory test. Good design and construction practices that prevent water and moisture exposure of building products are the most effective strategy to avoid the growth of mold.

Notice

The information in this document is subject to change without notice. CertainTeed assumes no responsibility for any errors that may inadvertently appear in this document.



Health Product
DECLARATION

The Health Product Declaration™ and logo is owned by the Health Product Declaration Collaborative™ and is used with permission.



ASK ABOUT ALL OF OUR OTHER CERTAINTEED® PRODUCTS AND SYSTEMS:

ROOFING • SIDING • TRIM • DECKING • RAILING • FENCE
GYPSUM • CEILINGS • INSULATION

www.certainteed.com <http://blog.certainteed.com>

CertainTeed Corporation
20 Moores Road
Malvern, PA 19355

Professional: 800-233-8990
Consumer: 800-782-8777

© 11-2010 CertainTeed Gypsum. Rev 12-2015
Printed in the U.S.A. on recycled paper. CTG-2481/3M