

HIGH PERFORMANCE ELASTOMETRIC SEALANT

$\frac{1}{8}$ " MINIMUM FLAT BAR STOCK  
MECHANICALLY FASTENED TO WALL  
9" O.C.

FLINTLASTIC BASE FLASHING

4" - 6"

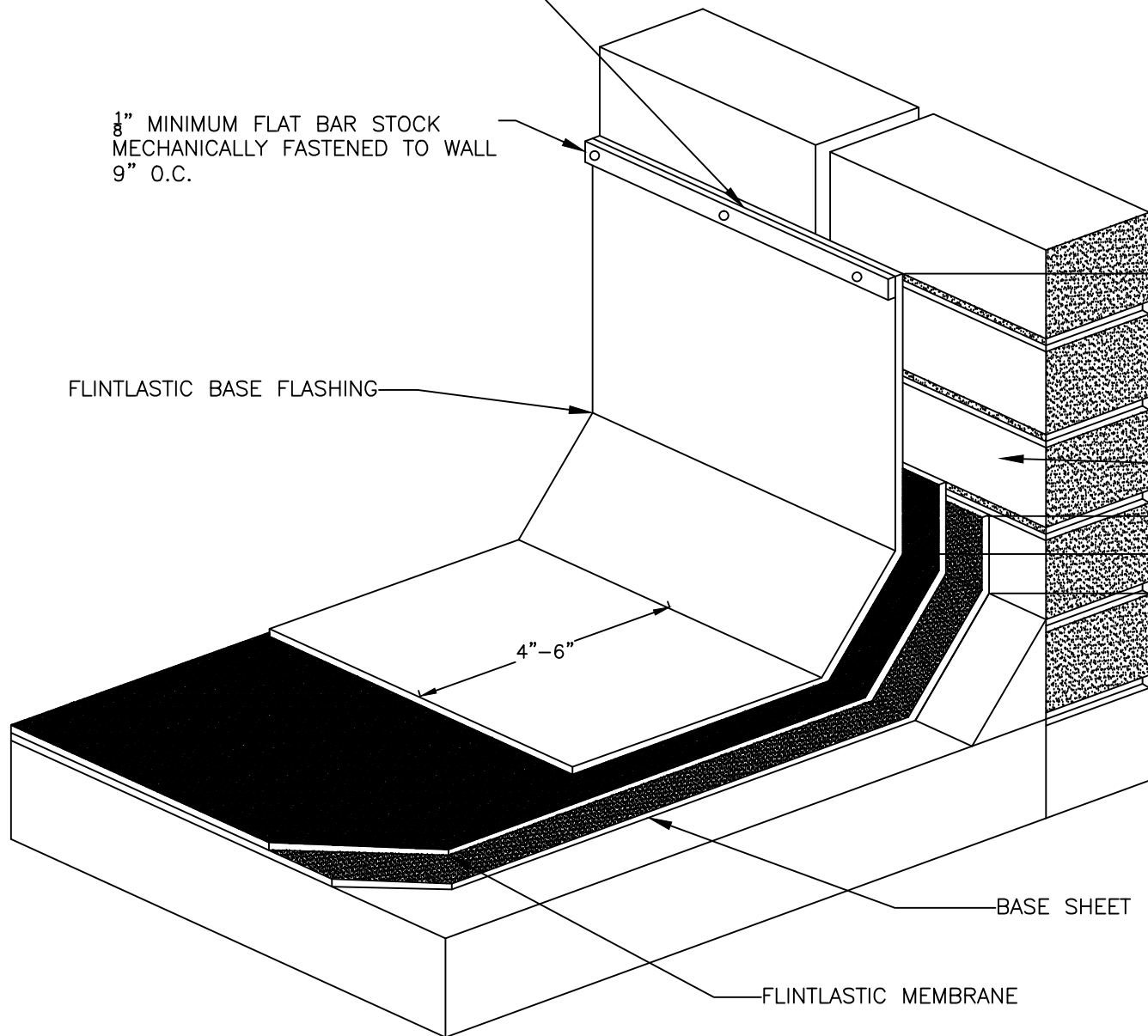
8" - 12"

PRIMED WALL

2", NOT ADHERED

BASE SHEET

FLINTLASTIC MEMBRANE



**CertainTeed**  
SAINT-GOBAIN

ISSUE DATE

11/1/2013

REVISION

B

DRAWING NUMBER

**CT-23**

SCALE

Not To Scale

**Termination Bar Flashing**

**Commercial Roofing**

Sheet 1 of 1