

PERFORMA®

Rx Symphony® m
VOC Compliant

LOW
VOC

\$\$\$



LEED® v4

- MR: Environmental Product Declarations (EPDs)
- MR: Sourcing Raw Materials
- MR: Material Ingredients (HPDs)
- IEQ: Daylight
- IEQ: Low-Emitting Materials
- IEQ: Prereq. Min. Acoustic Performance (Schools)
- IEQ: Acoustic Performance
- MR: PBT Source Reduction (Healthcare)
- IEQ: Interior Lighting
- EA: Prereq. Min. Energy Performance
- EA: Optimize Energy Performance
- Recycled Content
Pre: **54%** | Post: **0%**

TOOLS

Visit CertainTeed.com/Ceilings
Download HPDs and EPDs
LEED® Information / BIM Objects
3-Part Specs / Data Pages



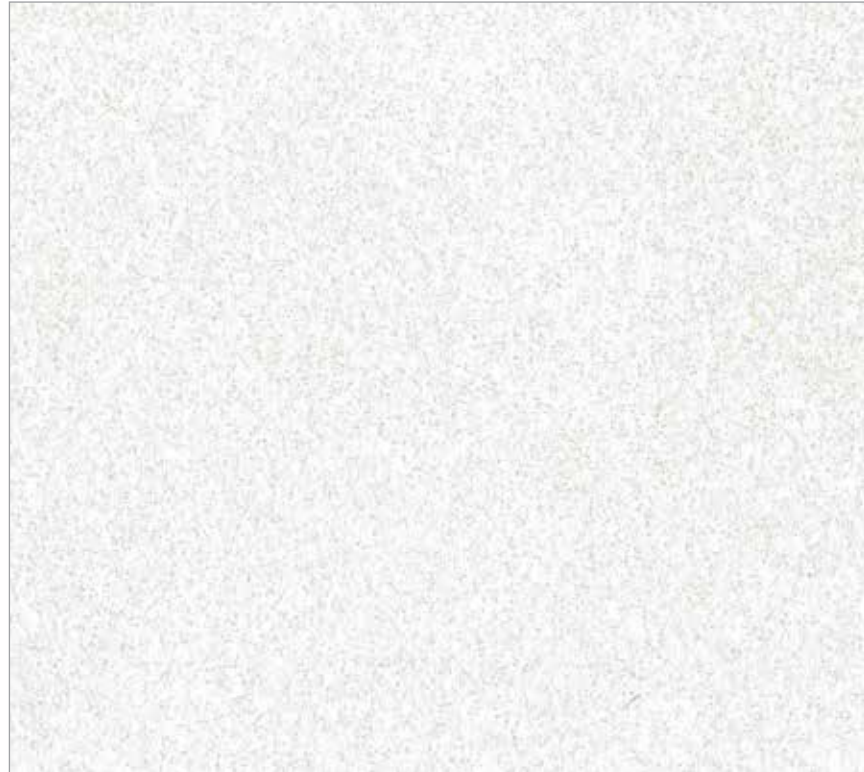
Recycled Content



EPD Available



HPD Available



The Rx Symphony line provides a white, clean, monolithic ceiling visual. Design with other products in the Rx Symphony line for acoustical solutions.

FEATURES & BENEFITS

- Superior noise reduction to maximize inter-zone attenuation
- Outstanding acoustical value, high light reflectance and humidity resistance
- Exceptional durability
- Superior stain resistance and water repellency
- Washable with most sanitizing solutions and wash-tested to 2,000 wash cycles
- Exceeds FGI guidelines for cleanability and acoustic performance in most healthcare applications
- Satisfies USDA/FSIS guidelines for sanitary applications (commercial kitchens)
- Approved for use in federally registered Canadian food establishments
- Suited as clean room component to ISO Class 3 (highest among comparable products)

APPLICATIONS

- Patient Rooms
- Emergency Rooms
- Lavatories and Restrooms
- Treatment Rooms
- Corridors
- Kitchen / Food Prep Areas
- Nurses' Stations
- Semi-Restricted Surgical Areas
- Other Commercial Buildings / Space Applications

AVAILABLE EDGE DETAILS



Trim
15/16 Grid



Reveal
15/16 Grid



Narrow Reveal
9/16 Grid



Narrow Reveal
9/16 Grid Bolt Slot



Narrow Reveal
9/16 Grid Tier Drop



Rx Symphony® m Trim (1222)

ATTRIBUTES

| | DIMENSIONS (INCHES) | EDGE DETAIL | NRC | CAC | EPD AVAILABLE | HPD AVAILABLE | SAG RESISTANT | MOLD RESISTANT | LR | WASHABLE | WASHABLE WITH SANITIZING CHEMICALS | FIRE CLASS (ASTM E1264) | EMISSION COMPLIANT | RECYCLED CONTENT | |
|----------------------------|---------------------|---------------|------|-----|---------------|---------------|---------------|----------------|------|----------|------------------------------------|-------------------------|--------------------|------------------|--|
| RX SYMPHONY® M - 75 | | | | | | | | | | | | | | | |
| 1220-75-RXS-1 | 24 x 48 x 3/4 | Trim | 0.75 | 36 | Yes | Yes | Yes | Bioshield | 0.90 | Yes | Yes | Class A | Certified | 54% | |
| 1220B-75-RXS-1 | 24 x 48 x 3/4 | Reveal | 0.75 | 36 | Yes | Yes | Yes | Bioshield | 0.90 | Yes | Yes | Class A | Certified | 54% | |
| 1220F-75-RXS-1 | 24 x 48 x 3/4 | Narrow Reveal | 0.75 | 36 | Yes | Yes | Yes | Bioshield | 0.90 | Yes | Yes | Class A | Certified | 54% | |
| 1222-75-RXS-1 | 24 x 24 x 3/4 | Trim | 0.75 | 36 | Yes | Yes | Yes | Bioshield | 0.90 | Yes | Yes | Class A | Certified | 54% | |
| 1222B-75-RXS-1 | 24 x 24 x 3/4 | Reveal | 0.75 | 36 | Yes | Yes | Yes | Bioshield | 0.90 | Yes | Yes | Class A | Certified | 54% | |
| 1222F-75-RXS-1 | 24 x 24 x 3/4 | Narrow Reveal | 0.75 | 36 | Yes | Yes | Yes | Bioshield | 0.90 | Yes | Yes | Class A | Certified | 54% | |
| RX SYMPHONY® M - 70 | | | | | | | | | | | | | | | |
| 1220-RXS-1 | 24 x 48 x 3/4 | Trim | 0.70 | 35 | Yes | Yes | Yes | Bioshield | 0.90 | Yes | Yes | Class A | Certified | 54% | |
| 1220B-RXS-1 | 24 x 48 x 3/4 | Reveal | 0.70 | 35 | Yes | Yes | Yes | Bioshield | 0.90 | Yes | Yes | Class A | Certified | 54% | |
| 1220F-RXS-1 | 24 x 48 x 3/4 | Narrow Reveal | 0.70 | 35 | Yes | Yes | Yes | Bioshield | 0.90 | Yes | Yes | Class A | Certified | 54% | |
| 1222-RXS-1 | 24 x 24 x 3/4 | Trim | 0.70 | 35 | Yes | Yes | Yes | Bioshield | 0.90 | Yes | Yes | Class A | Certified | 54% | |
| 1222B-RXS-1 | 24 x 24 x 3/4 | Reveal | 0.70 | 35 | Yes | Yes | Yes | Bioshield | 0.90 | Yes | Yes | Class A | Certified | 54% | |
| 1222F-RXS-1 | 24 x 24 x 3/4 | Narrow Reveal | 0.70 | 35 | Yes | Yes | Yes | Bioshield | 0.90 | Yes | Yes | Class A | Certified | 54% | |

CAN'T FIND A SIZE? Contact your local Sales Representative or call 800-233-8990

PHYSICAL DATA

MATERIAL

Mineral Fiber

ASTM E1264 CLASSIFICATION

Type IV, Form 2, Pattern E

FIRE CLASS (ASTM E1264)

Tested according to ASTM E84 & CAN S102

Flame Spread: 25 or less

Smoke Developed: 50 or less

VOC EMISSIONS

Independently certified compliant with California Department of Public Health CDPH/EHLB/Standard Method Version 1.1, 2010.

MOLD/MILDEW RESISTANCE

BioShield® treatment included for added mold and mildew resistance.

MAINTENANCE

Wipe with a soft cloth or vacuum with brush attachment. Cleanable with sanitizing chemicals.

WARRANTY

10-year 104/90 Limited Warranty

Technical Support | certainteed.com/ceilings 800-233-8990

© 04/17 CertainTeed Corporation

CertainTeed
SAINT-GOBAIN
Ceilings