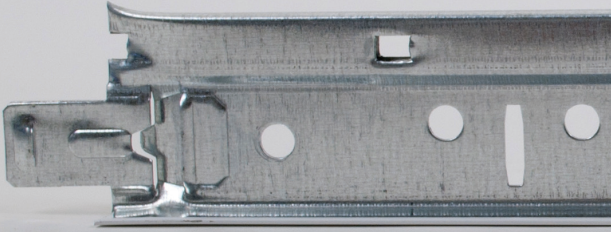
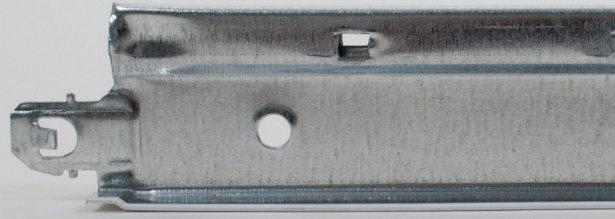


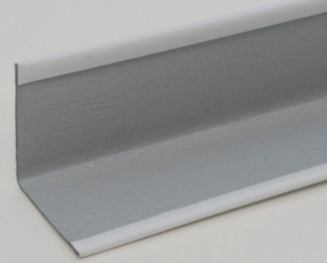
MAIN RUNNER



CROSS TEE



7/8" WALL ANGLE



Code compliance with simple installation. Suited for certain UL/ULC fire-rated designs.

FEATURES AND BENEFITS

- The FireSecure and Protectone® ceiling assembly offers fire-rated solutions for 2' x 2' and 2' x 4' modules
- Tested in accordance with ASTM E119 for certain time-rated, fire-resistive assemblies
- FireSecure and Protectone suspended ceiling designs have been tested and are listed at UL.com and certainteed.com/architectural
- Suitable for use in the following UL/ULC Fire Resistive Assemblies: D203, D205, G208, G218, G248, G255, I210, I211, L201, P204, P259, P260, P261, P264, P266, R224
- Suited for seismic categories A-C
- High recycled content

LEED® v4

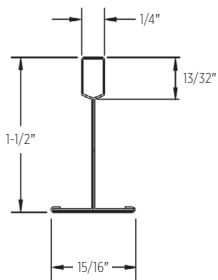
RECYCLED CONTENT

up to 88%

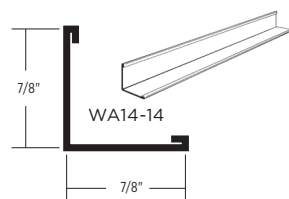
- ✓ MR: PBT Source Reduction (Healthcare)
- ✓ MR: Material Ingredients (HPDs)
- ✓ MR: Sourcing Raw Materials
- ✓ MR: Construction and Demolition Waste Management Planning

LEED® is a registered trademark of the U.S. Green Building Council.

MAIN RUNNER



WALL ANGLE



CERTIFICATIONS



HPD AVAILABLE

15/16" FIRESECURE™ STAB SYSTEM

| | Grid Face (in.) | Dimensions (in.) | Slot Spacing (in.) | Pieces/carton | Ft./carton | Seismic Design Category | Structural Classification (ASTM C635) | Recycled Content PRE* | Recycled Content POST* | Recycled Content TOTAL* | Allowable Uniform Load (plf) | Allowable Concentrated Load at midspan (lbf)** |
|--------------------|-----------------|---------------------|--------------------|---------------|------------|-------------------------|---------------------------------------|-----------------------|------------------------|-------------------------|------------------------------|--|
| MAIN RUNNER | | | | | | | | | | | | |
| FSS-12-12-15 | 15/16 | 144 x 1-1/2 x 15/16 | 6 O.C. | 20 | 240 | A-C | ID | 19% | 69% | 88% | 13.35 | 33.75 |
| CROSS TEE | | | | | | | | | | | | |
| FSS-2-12-15 | 15/16 | 24 x 1-1/2 x 15/16 | — | 60 | 120 | — | — | 19% | 69% | 88% | 44.0 | 55.01 |
| FSS-4-12-15 | 15/16 | 48 x 1-1/2 x 15/16 | 12 O.C. | 60 | 240 | — | — | 19% | 69% | 88% | 10.28* | 25.71 |
| WALL ANGLE | | | | | | | | | | | | |
| WA14-14 | 7/8 | 144 x 7/8 x 7/8 | — | 40 | 480 | — | — | 19% | 69% | 88% | — | — |

*Maximum recycled content percentage. Recycled content varies by manufacturing location.

**Allowable concentrated loads at midspan are determined in accordance with AC308 Section 3.2. For each framing member, the allowable concentrated load must not be combined with the allowable uniform load.

MAXIMUM FIXTURE WEIGHT

| Item Number | Configuration | | Fixture | | Hanger Spacing | | Maximum Weight | |
|---|---------------|---|-----------|-----------|----------------|-----|----------------|------------|
| | A | B | A | B | A | B | A | B |
| Main Runner to Main Runner – Drawing Key: Main Runner () Cross tee (---) Hanger wire (+) | | | | | | | | |
| FSS4-12-15 | | | 24" x 48" | 24" x 48" | 48" | 48" | 56.00 lbs. | 51.00 lbs. |
| FSS4-12-15 | | | 24" x 48" | 24" x 48" | 48" | 48" | 54.00 lbs. | 41.50 lbs. |
| FSS4-12-15 | | | 24" x 24" | 24" x 24" | 48" | 48" | 26.00 lbs. | 34.50 lbs. |

Cross tees tested as follows: FSS4-12-15 tested at 10.28 lbs/LF to 1/360 of 4' span.

ACCESSORIES

| | Item Number | Product Name | Dimensions L" x W" x H" (mm) | Color | Pieces/carton | Lbs./carton |
|----------|-------------|--|---|-------|---------------|-------------|
| SEISMIC | SLEEVE1516 | 15/16" Sleeve | 4 x 15/16 x 1/64 (102 x 24 x 1) | White | 100 | 1.25 |
| | CTSPC-2 | Seismic Perimeter Clip | 3-1/16 x 2-1/4 x 1-1/16 (78 x 58 x 27) | Metal | 100 | 9 |
| | CTSTJ | Seismic Transition Joint Clip | 3-1/2 x 3-1/2 x 1-3/16 (89 x 89 x 31) | Metal | 100 | 10 |
| STANDARD | AHD | Adjustable Hold Down Clip | 1-1/8 x 1/2 x 1-11/16 (29 x 13 x 43) | Black | 1000 | 16 |
| | OC15-1 | Outside Corner Cap 15/16" (24 mm) | 2-1/4 x 2-1/4 x 1/64 (58 x 58 x 1) | White | 100 | 3 |
| | IC15-1 | Inside Corner Cap 15/16" (24 mm) | 2-1/4 x 2-1/4 x 1/64 (58 x 58 x 1) | White | 100 | 3 |
| | HW12 | Hanger Wire 12' (3660 mm) 12 Gage (2.05 mm) | 144 x 12 gage x 12 gage (3658 x 12 gage x 12 gage) | Metal | 141 | 50 |
| | DLC | Direct Load Clip | 1-1/8 x 3-1/16 x 1/16 (29 x 78 x 2) | Metal | 150 | 9 |
| | SFYK | SmartFit Yoke | 8.55 x 1.25 x 9.56 (217 x 32 x 243) | Metal | 20 | 9 |

15/16" FIRESECURE™ STAB SYSTEM

PHYSICAL DATA

MATERIAL

Hot dipped galvanized steel (G30)

FACE DIMENSION

15/16"

CROSS TEE/MAIN RUNNER INTERFACE

Stepped-end, Override

DUTY CLASSIFICATION

Intermediate duty per ASTM C635

SURFACE FINISH

Painted Steel Cap

PROFILE HEIGHT

1-1/2"

END DETAIL

Main Runner: Integral Stab

Cross Tee: Integral Stab

SEISMIC CATEGORY

A, B, C

WARRANTY

10-year Limited Suspension Systems warranty increases to 15 years when installed with CertainTeed Ceiling Panels. Full warranty information can be found at certainteed.com/architectural.

SEISMIC PERFORMANCE

MAIN RUNNERS:

All main runners

MINIMUM LBS. TO PULLOUT

COMPRESSION/TENSION:

60 lbs.

CROSS TEES:

All cross tees

ICC EVALUATION SERVICE, INC., REPORT COMPLIANCE

Suspension systems manufactured by CertainTeed ceilings have been reviewed and are approved by listing in ICC-ES Evaluation Report ESR-3336. CertainTeed suspension systems have been reviewed and are approved by listing in the City of Los Angeles Building Code ESR-3336 LABC Supplement. Evaluation Reports are subject to reexamination, revision and possible cancellation. Refer to certainteed.com/architectural for current reports.



CertainTeed ARCHITECTURAL

METAL • WOOD • FELT • FIBERGLASS & MINERAL FIBER • GYPSUM • SUSPENSION & INTEGRATED SYSTEMS
20 Moores Road, Malvern, PA 19355 800-366-4327 certainteed.com/architectural