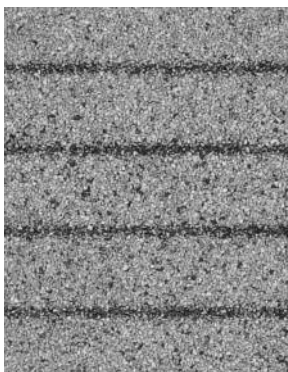


## CHANNEL VENT™ BASE SHEET ASPHALT COATED FIBER GLASS BASE SHEET

### Product Information



Close-up of Venting Channels

**Product Use:** CertainTeed's Channel Vent™ Base Sheet is designed for use as a base sheet for both hot and cold applied SBS modified bitumen, APP modified bitumen or built-up roofing systems where additional venting is desirable. It is suitable for use as the first ply in the construction of various types of roof membrane assemblies for new construction, reroofing and re-cover applications. CHANNEL VENT Base Sheet is used over nailable, non-nailable and insulated substrates. It is particularly suitable for use over lightweight insulating concrete decks, as an underlayment for insulation over monolithic decks, and for recovering over existing roof membranes. When applied as directed, Channel Vent will vent at all eaves, edges and parapet walls by permitting lateral transmission of vapor. The use of roofing vents, spaced one per 600 sq. ft. of roof area, in the field area of the roof completes the ventilation system.

**Precautions:** CHANNEL VENT Base Sheet must be mechanically fastened with appropriate fasteners or applied using the spot-mopping method with hot asphalt over non-nailable surfaces. Rolls should be stored upright, off the ground and completely protected from the weather. Roof decks shall be structurally sound, dry, smooth and meet or exceed minimum requirements of the deck manufacturer, local code and CertainTeed. Additional specifications and precautions are contained in the CertainTeed Commercial Roof Systems Manual.

**Product Composition and Features:** CHANNEL VENT Base Sheet is manufactured using a high performance, fiber glass mat which is impregnated and coated with asphalt on both sides. The bottom surface is covered with mineral granules and then embossed to provide positive channels for the escape of moisture vapor. Venting channels are approximately 1/4" wide, spaced approx. 1 1/4" apart, and run the length of the roll. CHANNEL VENT Base Sheet is dusted with a fine mineral surfacing on the top side.

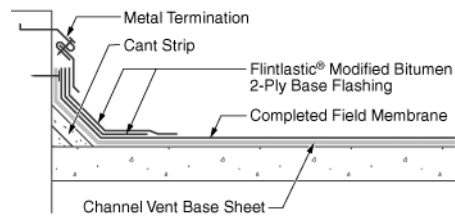
- Roll Dimensions:** 39<sup>3</sup>/<sub>8</sub>" x 32'11"
- Coverage\*:** Gross: Approx. 108 sq. ft.  
Net: Approx. one square (100 sq. ft.)
- Approximate Roll Weight:** 78 lbs.
- Thickness:** 3.0mm (120 mils)
- Top Surface:** Fine Sand
- Back Surface:** Mineral Granules
- Coating:** Asphalt
- Support Mat:** A high performance, fiber glass mat
- Packaging:** 25 rolls per pallet

**Applicable Standards:** CHANNEL VENT BASE SHEET is approved by Underwriters Laboratories for use in various Class A, B, and C roof assemblies, by ICC-ES (ESR-1388), Factory Mutual, Miami-Dade, Florida Building Code Statewide Approval (FL 477 and FL 479). Consult [www.certainteed.com/lowslopetechinfo](http://www.certainteed.com/lowslopetechinfo) for details. Meets ASTM D4897, Type II,

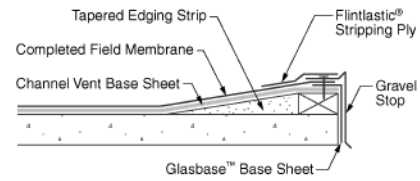
### Technical Data

The following represents typical, average properties for Channel Vent Base Sheet:

Test Description	Results
Tensile Strength @ 77°F (25°C); lbs/in (kN/m)	MD 85 (14.9) XMD 70 (12.3)
Elongation at Break @ 77°F (25°C); %	MD 4 XMD 4.5
Notched Tear Strength @ 77°F (25°C); lbs (N)	MD 85 (378) XMD 75 (334)
Low Temperature Flexibility @ 40°F (4°C);	MD and XMD PASS



Channel Vent Base Sheet Wall Termination



Channel Vent Base Sheet Edge Detail

## Product Application

Roof systems constructed with CertainTeed's CHANNEL VENT Base Sheet as the base ply shall be applied in accordance with installation procedures contained in the CertainTeed Commercial Roof Systems Manual. The following information is intended for general information purposes only and is not all-inclusive. Also refer to the product labels and Material Safety Data Sheets prior to product use.

**Preparation:** Substrates that receive a roof system shall be firmly attached, smooth, dry, clean and free of sharp projections and depressions. Flashing details shall be in place, ready to receive roofing with roof accessories available prior to application of materials. Substrates requiring priming shall be primed with suitable asphalt primer such as FlintPrime™ and be allowed to completely dry. Substrates shall provide positive drainage. Roof insulation shall be tapered to drains.

**Installation:** (See note below for Factory Mutual requirements). CHANNEL VENT Base Sheet shall be installed granule side down with 2" side laps and 4" end laps. End laps must be diagonally staggered not less than 3 feet apart. For nailable substrates, mechanically fasten CHANNEL VENT Base Sheet 9" o.c. at side laps and 18" o.c. in two rows, 12" in from each edge with approved fasteners. At all parapets and curbs, carry the Channel Vent Base Sheet up the face of the cant and cut off one inch below the line where the cap flashings attach to the wall. Nail, but do not seal top edge. At gravel stops, cut the Channel Vent Base Sheet off flush with the outside edge of the nailer or deck. Nail a dry 12-inch wide strip of \*base sheet over the nailer and the Channel Vent Base Sheet extending down the outside face of the nailer to be covered by the metal fascia. (\*Use the same CertainTeed base sheet specified in the CertainTeed Roof System being installed for this purpose). Install the remainder of the roofing plies as specified in the CertainTeed Commercial Roof Systems Manual for the particular roof system design.

For non-nailable or insulated substrates, CHANNEL VENT Base Sheet shall be set in a spot mopping of "steep" bitumen as required by the CertainTeed Commercial Roof Systems Manual. Spot mopping, when specified, shall be applied in 9" diameter circles, 24" o.c. in all directions. Bitumen shall be heated and applied within temperature guidelines as set forth by CertainTeed according to type and grade.

**Note:** FM 1-90 listed specifications require the following fastening methods: 1) Mechanically fastened with 4" side laps and 4" end laps, 12" o.c. at the side laps and 18" o.c. in two staggered rows 12" from each side lap or 2) spot mopped with 4" side laps and 4" end laps in "steep" hot asphalt using 24" diameter spots 30" o.c. Consult with CertainTeed for complete FM system requirements.

**Precautions:** Cold weather applications require special handling to prevent damage to the rolls and to ensure satisfactory installation. Do not apply roofing systems over improperly prepared substrates or substrates which contain moisture.

**Maintenance:** CertainTeed's Commercial Roofing Systems do not require any special maintenance beyond normal routine roof maintenance procedures. CertainTeed recommends regular roof maintenance and inspection to determine the condition of drains, flashings and other similar items.

## Warranties

CertainTeed offers a number of different types of Roof Membrane Warranties designed to meet the building owner's specific requirements. Please contact your nearest CertainTeed office for additional information and requirements.

## Technical Assistance and Services

CertainTeed provides technical assistance in the design, selection, specification and application techniques for all CertainTeed Commercial Roof Systems. Architectural and field representatives are available for consultation within each region. For more information, contact CertainTeed's Customer Support at 800-233-8990.

## ASK ABOUT OUR OTHER CERTAINTEED PRODUCTS AND SYSTEMS:

EXTERIOR: ROOFING • SIDING • WINDOWS • FENCE • RAILING • TRIM • DECKING • FOUNDATIONS • PIPE  
 INTERIOR: INSULATION • GYPSUM • CEILINGS

CertainTeed Corporation  
 P.O. Box 860  
 Valley Forge, PA 19482

Professional: 800-233-8990  
[www.certainteed.com](http://www.certainteed.com)

**CertainTeed** 