

# CertainTeed

## Specification Sheet

### CertaPro™ Thermal Extended Flange Batts

#### 1. PRODUCT NAME

CertainTeed CertaPro™ Thermal  
Extended Flange Batts

#### 2. MANUFACTURER

CertainTeed Corporation  
P.O. Box 860  
Valley Forge, PA 19482-0105  
Phone: 610-341-7000  
800-233-8990  
Fax: 610-341-7571  
Website:  
www.certainteed.com/insulation

#### 3. PRODUCT DESCRIPTION

**Basic Use:** Designed for use in exposed wood framing, below panel deck roof systems and other special constructions where a 25 Flame Spread rating (Class A, Class 1) for exposed applications is required. The extended flange permits use in applications where a wider flange is required.

**Benefits:** CertaPro Extended Flange Batts deliver thermal performance that saves energy and helps control building operating costs. The excellent acoustical properties improve sound control performance in commercial panel decks. The product resists fungal growth and will not rot or deteriorate. CertaPro Thermal Extended Flange Batts are lightweight and will not settle or sag.

The FSK- and white PSK-faced products reduce lighting requirements when exposed, due to their light-reflective surfaces. The low permeance facings are also effective in resisting water vapor transmission.

**Composition and Materials:** This product is made from inorganic glass fibers bonded with a thermoset resin to form a uniformly textured, yellow blanket insulation.

Either a foil-scrim-kraft (FSK) or a polypropylene-scrim-kraft (PSK) vapor retarder is adhered to the fiber glass batt. These facings have 4" extended flanges.

**Limitations:** The National Electrical Code prohibits installation of insulation over or within 3" (76 mm) of recessed light fixtures, unless approved insulated ceiling (IC) lighting fixtures are used. Insulation should be kept clean and dry at all times.

**Sizes:** Available as shown in the table on the other side. Contact CertainTeed for other sizes and minimum order quantities.

#### 4. TECHNICAL DATA

- Applicable Standards:**
- Model Building Codes:
    - ICC
    - California Quality Standards Reg. No. CA-T024 (PA)
    - City of Los Angeles, RR 8148 (FSK)
  - Material Standards
    - (ASTM C553) Type I
    - (ASTM C665) Type II, Class A, Category 1 (PSK)
    - (ASTM C665) Type III, Class A, Category 1 (FSK)
- Fire Resistance:**
- Surface Burning Characteristics:
    - (ASTM E84, UL 723, NFPA 255) Max. Flame Spread Index: 25
    - (ASTM E84, UL 723, NFPA 255) Max. Smoke Developed Index: 50
  - Noncombustibility:
    - (ASTM E136) Pass
- Physical/Chemical Properties:**
- Thermal Performance:
    - (ASTM C177 or ASTM C 518) See table on other side.
  - Maximum Use Temperature:
    - Temperature: (ASTM C411) Max. 250°F (121°C)
  - Water Vapor Permeance:
    - (ASTM E96)  $\leq 0.02$  perms (1.1 ng/Pa•s•m<sup>2</sup>)



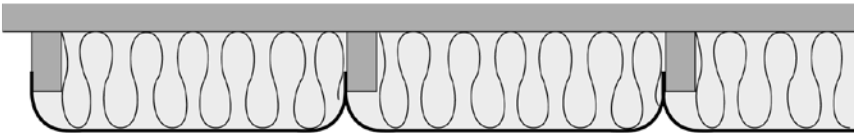
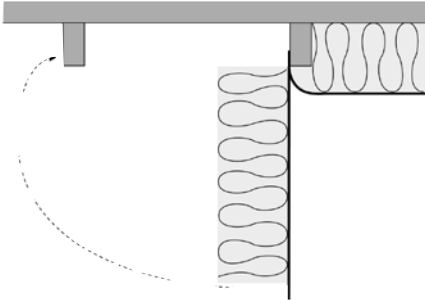
- Water Vapor Sorption:
  - (ASTM C1104)  $\leq 3\%$  by weight
- Corrosiveness:
  - (ASTM C665) Pass
- Fungi Resistance:
  - (ASTM C1338) Pass
- Odor Emission:
  - (ASTM C1304) Pass

**Quality Assurance:** Many of CertainTeed's insulation manufacturing plants are registered to ISO 9001-2000 standards.

#### 5. INSTALLATION

Position the batt and staple through the back surface of the extended flange to the side of the joist. Swing the batt into the cavity, fold the opposite flange over the other side of the next joist, and staple the flange to it, spacing staples approximately every 8" (200mm) with beginning and ending staples about 1" (25mm) from the end of the flange. This installation allows full thickness recovery of R-19 insulation with 2 x 4 construction. For R-30 insulation in 2 x 6 construction the insulation is compressed to approximately 8 1/2" (216mm) which results in an installed R-value of 28 (4.93 RSI). In each case, the insulation should hang

approximately 3" (75mm) below the bottom of the joists. These installation recommendations are general in nature. Other methods are acceptable. Please consult your contractor for recommendations best suited to the application.



## 6. AVAILABILITY AND COST

Manufactured and sold throughout the United States. For availability and cost contact your local distributor, or call CertainTeed Sales Support Group in Valley Forge, PA at 800-233-8990.

## 7. WARRANTY

Refer to CertainTeed's Limited Warranty for Commercial Insulation on manufacturing defects (30-25-034). Inasmuch as CertainTeed has no control over the installation design, installation workmanship, accessory materials, or conditions of application, CertainTeed does not warrant the performance or results of any installation containing its products.

## 8. MAINTENANCE

No maintenance required.

## 9. TECHNICAL SERVICES

Technical assistance can be obtained either from the local CertainTeed sales representative, or by calling CertainTeed Sales Support Group in Valley Forge, PA at 800-233-8990.

AVAILABLE SIZES

| R-Value |      | Thickness |     | Width |     | Length |      |
|---------|------|-----------|-----|-------|-----|--------|------|
| R       | RSI  | in.       | mm  | in.   | mm  | in.    | mm   |
| 19      | 3.35 | 6¼        | 159 | 23    | 584 | 93     | 2362 |
| 19      | 3.35 | 6¼        | 159 | 23    | 584 | 96     | 2438 |
| 30*     | 5.28 | 10        | 254 | 24    | 610 | 48     | 1219 |

\* FSK only



## ASK ABOUT OUR OTHER CERTAINTEED PRODUCTS AND SYSTEMS:

**EXTERIOR:** ROOFING • SIDING • WINDOWS • FENCE • RAILING • TRIM • DECKING • FOUNDATIONS • PIPE  
**INTERIOR:** INSULATION • GYPSUM • CEILINGS

CertainTeed Corporation  
P.O. Box 860  
Valley Forge, PA 19482

Professional: 800-233-8990  
Consumer: 800-782-8777  
[www.certainteed.com/insulation](http://www.certainteed.com/insulation)

**CertainTeed**